

# Expona Commercial



## PRODUCT SPECIFICATION

### Key Features

- > Wood, stone & abstract designs
- > Multiple plank & tile sizes
- > Creative inlay accessories available
- > Low VOC emissions
- > Heavy traffic areas & residential
- > Up to 40% recycled content
- > Breeam-NOR compliant
- > Low maintenance cost
- > Phtalate-free



Product Format	Standard	Result
Gauge	ISO 24346 (EN 428)	2.5mm
Wear Layer	ISO 24340 (EN 429)	0.55mm
Total Weight	ISO 23997 (EN 430)	4290g/m <sup>2</sup>
Finish		PUR

Plank & Tile Sizes	Size	Shades	Quantity per Box	Coverage per Box/Roll
Plank	101.6mm x 914.4mm	2	36	3.34m <sup>2</sup>
	152.4mm x 609.6mm	5	36	3.34m <sup>2</sup>
	152.4mm x 914.4mm	6	24	3.34m <sup>2</sup>
	152.4mm x 1219.2mm	8	18	3.34m <sup>2</sup>
	184.2mm x 1219.2mm	6	15	3.37m <sup>2</sup>
	184.2mm x 1524mm	7	12	3.37m <sup>2</sup>
	203.2mm x 1219.2mm	7	14	3.46m <sup>2</sup>
	203.2mm x 1524mm	10	11	3.41m <sup>2</sup>
Tile	304.8mm x 914.4mm	4	12	3.34m <sup>2</sup>
	457.2mm x 914.4mm	4	8	3.34m <sup>2</sup>
	609.6mm x 609.6mm	13	9	3.34m <sup>2</sup>
	609.6mm x 1219.2mm	8	8	5.95m <sup>2</sup>

Performance Requirements	Standard	Result
General Performance	ISO 10582 (EN 649) ASTM F1700	Conforms Class III Type A+B
Use Area	ISO 10874 (EN 685)	23, 33, 42
Slip Resistance	EN 13893 DIN 51130 / DIN EN 16165 Ann. B ASTM D2047 AS 4586	Class DS R10 ≥0.5 R10
Binder Content	ISO 10582	Type I
Abrasion Resistance	EN 649	Group T

<b>Reaction to Fire</b>	EN 13501-1 ASTM E662 ASTM E648 CAN/ULC S102.2	Class Bfl-S1 <450 Pass Class 1 FSV < 300; SDV < 500
<b>Static Electrical Propensity</b>	EN 1815	≤2.0kV Classified as 'antistatic'
<b>Residual Indentation</b>	ISO 24343-1 ASTM F970 ASTM F1914	≤0.05mm* ≤0.005" @ 750psi ≤0.005"
<b>Castor Chair (continuous use)</b>	ISO 4918 (EN 425)	Suitable
<b>Dimensional Stability</b>	ISO 23999 (EN 434) ASTM F2199	≤0.10% Pass
<b>Flexibility</b>	ASTM F137	1" - Pass
<b>Underfloor Heating</b>		Suitable, max 27°C
<b>Light Fastness</b>	ISO 105-B02 (Method 3)	≥6
<b>Resistance to Light</b>	ASTM F1515	ΔE ≤ 8.0 - Meets
<b>Resistance to Heat</b>	ASTM F1514	ΔE ≤ 8.0 - Meets

\*Average test value from current production.

Sustainability	Standard	Result
<b>Breem- NOR</b>		Compliant
<b>GreenTag</b>	LCA Rate Gold Plus	GreenRate level A
<b>EN 15804 EPD</b>		Available
<b>Recyclable</b>		100%
<b>Recycled Content</b>		Up to 40%
<b>REACH</b>		Compliant
<b>Indoor Air Comfort Gold</b>		Eurofins certified product
<b>FloorScore</b>		Certified
<b>Finnish M1 Classification</b>		Certified
<b>AgBB/ABG</b>		Pass
<b>Responsible Sourcing</b>	BES 6001 SA 8000	Very good Approved factory

Acoustic Performance	Standard	Result
<b>Impact Sound Reduction</b>	ISO 10140-3	2dB
<b>Sound Transmission Coefficient</b>	ASTM E90/492	STC 55
<b>Impact Insulation Class</b>	ASTM E90/492	IIC 36

Maintenance Performance	Standard	Result
<b>Resistance to Chemicals</b>	ISO 26987 (EN 423) ASTM F925	Good resistance Good resistance

Regular light maintenance is more cost-effective than periodic heavy maintenance and more beneficial to the floor covering.



**Polyflor Nordic** • Kjelsåsveien 168 B, 0884 OSLO • Tel: +47 23 00 84 00 • Email: firmapost@polyflor.no • www.polyflor.no

**Polyflor Nordic Sweden AB** • Energigatan 9, 434 37 KUNGSBACKA • Tel: +46 (0) 300-15820 • Email: info@polyflor.se • www.polyflor.se

# Expona Commercial



## RANGE SHADES

### 609.6mm x 609.6mm

24" x 24"



Oiled Oak Versailles **4129**  
LRV 28



Sherwood Oak Versailles **4124**  
LRV 19



Everglade Oak Versailles **4127**  
LRV 25



Cottage Oak Prisma **4117**  
LRV 22



Vineyard Oak Prisma **4118**  
LRV 30



Provence Oak Prisma **4119**  
LRV 21



### 152.4mm x 609.6mm

6" x 24"



French Vanilla Oak Parquet **4122**  
LRV 38



Saffron Oak Parquet **4121**  
LRV 18



Oiled Oak Parquet **4128**  
LRV 28



Sherwood Oak Parquet **4123**  
LRV 19



Everglade Oak Parquet **4126**  
LRV 25



### 152.4mm x 914.4mm

6" x 36"



White Oak **4037**

LRV 49



Smoked Beam **4033**

LRV 40



Blond Country Plank **4017**

LRV 34



Light Elm **4034**

LRV 25



Weathered Country Plank **4019**

LRV 13



Black Elm **4035**

LRV 9

### 101.6mm x 914.4mm

4" x 36"



Classic Oak **1902**

LRV 27



Endgrain Woodblock **4109**

LRV 17

**Expona Commercial**

**184.2mm x 1219.2mm**  
7.25" x 48"




Una White Oak **4132**   LRV 48



Wilder Oak **4133**   LRV 39



Oiled Oak **4098**   LRV 28



Sherwood Oak **4099**   LRV 19



Everglade Oak **4101**   LRV 25



Roasted Oak **4079**  LRV 15

**184.2mm x 1524mm**  
7.25" x 60"




Natural Barnwood **4107**  LRV 45



Everest Oak **4134**  LRV 47



Grey Barnwood **4108**  LRV 38



Shoreline Oak **4078** LRV 30



French Vanilla Oak **4058**   LRV 38



Saffron Oak **4057**   LRV 18



Wild Orchard Oak **4114**  LRV 22

**152.4mm x 1219.2mm**  
6" x 48"



Beige Varnished Wood **4069** LRV 35



Light Varnished Wood **4071** LRV 36



Grey Ash **4020**  LRV 28



Honey Ash **4022**  LRV 25



Light Classic Oak **4085** LRV 33



Honey Classic Oak **4086** LRV 23



Amber Classic Oak **4087** LRV 22



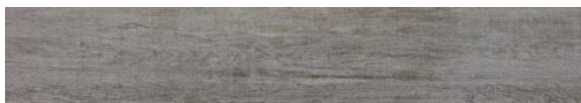
Dark Classic Oak **4088** LRV 16

Expona Commercial

**203.2mm x 1219.2mm**  
8" x 48"



Grey Limed Oak **4082**  LRV 25



Silvered Driftwood **4014**   LRV 19



Blond Limed Oak **4081**  LRV 34



Natural Brushed Oak **4031**  LRV 26



Antique Oak **4016**  LRV 16



Dark Limed Oak **4083**  LRV 11



Dark Brushed Oak **4030**  LRV 10

**203.2mm x 1524mm**  
8" x 60"



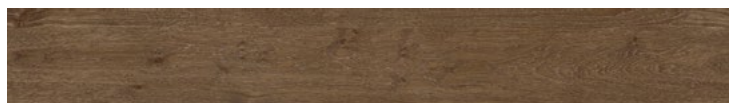
Grey Salvaged Wood **4104**  LRV 33



Blue Salvaged Wood **4103**  LRV 36



Bronzed Salvaged Wood **4106**  LRV 29



Cottage Oak **4116**  LRV 22



Vineyard Oak **4136**  LRV 30



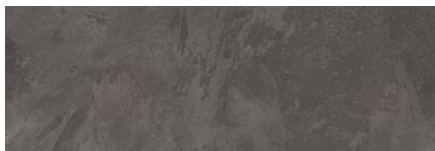
Provence Oak **4113**  LRV 21

Expona Commercial

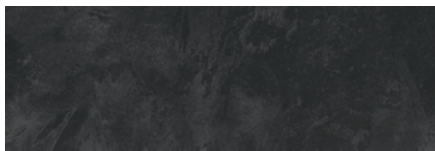
**304.8mm x 914.4mm**  
12" x 36"



Dovestail Slate **5058**  LRV 29



Urban Slate **5057**  LRV 10



India Ink Slate **5056**  LRV 6



Dark Contour **5046** LRV 10

**203.2mm x 1524mm**  
8" x 60"



Light Triassic **5119**   LRV 58



Grey Triassic **5121**   LRV 46



Grey Abstract **5117**  LRV 47



Black Abstract **5118**  LRV 16

Expona Commercial

**609.6mm x 609.6mm**  
24" x 24"



Light Grey Concrete **5067** LRV 34



Cool Grey Concrete **5068** LRV 23



Dark Grey Concrete **5069** LRV 14



Warm Grey Concrete **5064** LRV 22



Arctic Mosaic **5094** LRV 59



Granite Mosaic **5095** LRV 8

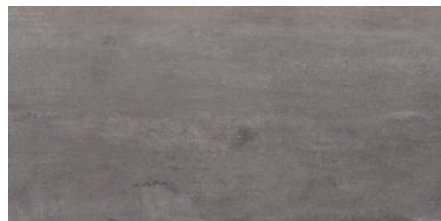


Black Textile **5077** LRV 16

**457.2mm x 914.4mm**  
18" x 36"



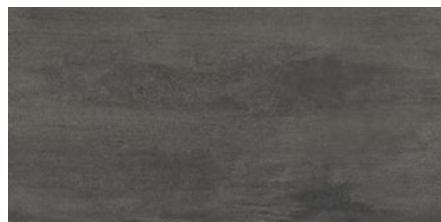
Bister **5099**  LRV 52



Industrial Steel **5101**  LRV 18



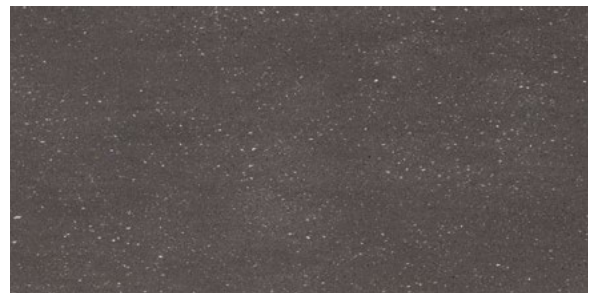
Rusted Metal **5098**  LRV 16



Iron Ore **5102**  LRV 10

**609.6mm x 1219.2mm**

24" x 48"

Pure Cement **5034**Tan Cement **5035**Light Micro Terrazzo **5123**Grey Micro Terrazzo **5124**Warm Micro Terrazzo **5125**Silica Micro Terrazzo **5126**Dark Terrazzo **5127**Grey Terrazzo **5128**

\*No pattern repeat

LRV - Light Reflectance Value



Bevelled Edges



Colour/Pattern Variation



Oversized Tiles