

# Expona Design PUR

## PRODUCT SPECIFICATION

### Key Features

- > Wood, stone & abstract designs
- > Multiple plank & tile sizes
- > Inlay accessories for bespoke designs
- > Low VOC emissions
- > Heavy commercial & residential



Product Format	Standard	Result
Gauge	ISO 24346 (EN 428)	3.0mm
Wear Layer	ISO 24340 (EN 429)	0.70mm
Total Weight	ISO 23997 (EN 430)	5100g/m <sup>2</sup>
Finish		PUR

Plank & Tile Sizes	Size	Shades	Quantity per Box	Coverage per Box/Roll
Plank	152.4mm x 914.4mm	1	24	3.34m <sup>2</sup>
	203.2mm x 1219.2mm	2	14	3.46m <sup>2</sup>
	184.2mm x 1524mm	7	12	3.37m <sup>2</sup>
	203.2mm x 1524mm	4	11	3.41m <sup>2</sup>
Tile	609.6mm x 609.6mm	3	9	3.34m <sup>2</sup>
	304.8mm x 609.6mm	3	18	3.34m <sup>2</sup>
	304.8mm x 914.4mm	2	12	3.34m <sup>2</sup>
	457.2mm x 914.4mm	1	8	3.34m <sup>2</sup>
	914.4mm x 914.4mm	3	6	5.01m <sup>2</sup>
	609.6mm x 1219.2mm	4	6	4.46m <sup>2</sup>

Performance Requirements	Standard	Result
General Performance	ISO 10582 (EN 649) ASTM F1700	Conforms Class III Type A+B
Use Area	ISO 10874 (EN 685)	23, 34, 43
Slip Resistance	EN 13893 DIN 51130 / DIN EN 16165 Ann. B AS 4586	Class DS R10 R10
Binder Content	ISO 10582	Type I
Abrasion Resistance	EN 649	Group T

<b>Reaction to Fire</b>	EN 13501-1 ASTM E662 ASTM E648 CAN/ULC S102.2	Class Bfl-S1 <450 Pass Class 1 FSV < 300; SDV < 500
<b>Static Electrical Propensity</b>	EN 1815	≤2.0kV Classified as 'antistatic'
<b>Residual Indentation</b>	ISO 24343-1 ASTM F970 ASTM F1914	<0.05mm* ≤0.005" @ 750psi ≤0.005"
<b>Castor Chair (continuous use)</b>	ISO 4918 (EN 425)	Suitable
<b>Dimensional Stability</b>	ISO 23999 (EN 434) ASTM F2199	≤0.10% Pass
<b>Flexibility</b>	ASTM F137	1" - Pass
<b>Underfloor Heating</b>		Suitable, max 27°C
<b>Light Fastness</b>	ISO 105-B02 (Method 3)	≥6
<b>Resistance to Light</b>	ASTM F1515	ΔE ≤ 8.0 - Meets
<b>Resistance to Heat</b>	ASTM F1514	ΔE ≤ 8.0 - Meets

\*Average test value from current production.

<b>Sustainability</b>	<b>Standard</b>	<b>Result</b>
<b>BRE Green Guide</b>		A+ ENP 429
<b>GreenTag</b>	LCA Rate Gold Plus	GreenRate level A
<b>Specific EN 15804 EPD</b>		Available
<b>Recyclable</b>		100%
<b>Recycled Content</b>		Up to 40%
<b>REACH</b>		Compliant
<b>Indoor Air Comfort Gold</b>		Eurofins certified product
<b>FloorScore</b>		Certified
<b>Finnish M1 Classification</b>		Certified
<b>AgBB/ABG</b>		Pass
<b>Responsible Sourcing</b>	BES 6001 SA 8000	Very good Approved factory

<b>Acoustic Performance</b>	<b>Standard</b>	<b>Result</b>
<b>Impact Sound Reduction</b>	ISO 10140-3	3dB
<b>Sound Transmission Coefficient</b>	ASTM E90/492	STC 55
<b>Impact Insulation Class</b>	ASTM E90/492	IIC 36

<b>Maintenance Performance</b>	<b>Standard</b>	<b>Result</b>
<b>Resistance to Chemicals</b>	ISO 26987 (EN 423) ASTM F925	Good resistance Good resistance

Regular light maintenance is more cost-effective than periodic heavy maintenance and more beneficial to the floor covering.



## Polyflor Ltd. Head Office

PO Box 3, Radcliffe New Road, Whitefield, Manchester, M45 7NR • Tel: +44 (0) 161 767 1111 • Email: info@polyflor.com • www.polyflor.com

© At the time of writing and publication of sheet, all the information is specified correctly. The company reserves the right to change the specifications of this product at any time without prior notice to third parties.

# Expona Design PUR



## RANGE SHADES

**203.2mm x 1524mm**  
8" x 60"



Salvaged Pier Timber **9048\***

LRV 57/14/43



Rustic Spiced Timber **9047\***

LRV 48/8/40



Whiskey Barrel Timber **9049\***

LRV 41/13/28



Reclaimed Inked Oak **9051\***

LRV 33/20/13

\*Each shade contains the 6 plank variants below.

**Expona Design** PUR

**184.2mm x 1524mm**

7.25" x 60"



Pacific Oak **9041**

 LRV 47



Parkside Oak **9039**

 LRV 31



Mango Oak **9042**

 LRV 22



Promenade Oak **9038**

 LRV 25



Coral Medley **9126**

 LRV 48



Smoked Medley **9125**

 LRV 27



Sepia Medley **9127**

 LRV 27

**203.2mm x 1219.2mm**

8" x 48"



Silvered Driftwood **6146**

 LRV 19



Natural Brushed Oak **6179**

 LRV 23

**152.4mm x 914.4mm**

6" x 36"




Light Elm **6182**


LRV 25

**304.8mm x 609.6mm**  
12" x 24"



Monochrome Geotexture **9148**   
LRV 39





Cream Geotexture **9147**   
LRV 58





Atlantic Slate **7154**  
LRV 13

**609.6 x 609.6mm**  
24" x 24"



Grey Stencil Concrete **9139**    
LRV 38



Rusted Stencil Concrete **9141**    
LRV 24

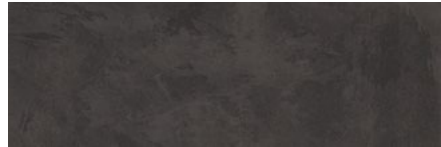


Cool Grey Concrete **7237**  
LRV 22

**304.8 x 914.4mm**  
12" x 36"



Silverline Slate **9145**   
LRV 24



Charcoal Slate **9146**   
LRV 7

**457.2 x 914.4mm**  
18" x 36"



Black Treadplate **8122**  
LRV 12

**609.6 x 1219.2mm**  
24" x 48"



Frosted Cement **9134**

 LRV 63



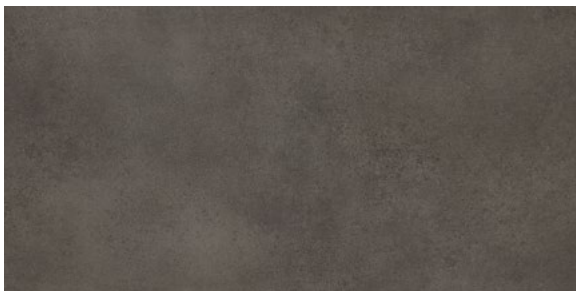
Wet Cement **9135**

 LRV 45



Subway Cement **9133**

 LRV 27



Factory Cement **9137**

 LRV 16

**914.4mm x 914.4mm**  
36" x 36"



Pearl Stone **9128**

LRV 42



Medina Stone **9131**

LRV 18



African Blue Stone **9132**

LRV 11

LRV - Light Reflectance Value

 Bevelled Edges

 Colour/Pattern Variation

**Polyflor Ltd. Head Office**

PO Box 3, Radcliffe New Road, Whitefield, Manchester, M45 7NR • Tel: +44 (0) 161 767 1111 • Email: [info@polyflor.com](mailto:info@polyflor.com) • [www.polyflor.com](http://www.polyflor.com)

© At the time of writing and publication of sheet, all the information is specified correctly. The company reserves the right to change the specifications of this product at any time without prior notice to third parties.