

# Bloc

## PRODUCT SPECIFICATION

### Key Features

- > Heavy duty sheet flooring
- > Single solid colours with textured emboss
- > Low maintenance cost
- > Retail & leisure interiors
- > Breeam-NOR compliant
- > Phthalate-free



Product Format	Standard	Result
Gauge	ISO 24346 (EN 428)	2.0mm
Wear Layer	ISO 24340 (EN 429)	0.70mm
Total Weight	ISO 23997 (EN 430)	2660g/m <sup>2</sup>
Finish		PUR

Sheet Size	Size	Shades	Quantity per Box	Coverage per Box/Roll
Sheet	2m x 20m	16	-	40m <sup>2</sup>

Performance Requirements	Standard	Result
General Performance	ISO 10582 (EN 649) ASTM F1303	Conforms Type I, Grade I, Class B Backing
Use Area	ISO 10874 (EN 685)	23, 34, 43
Slip Resistance	EN 13893 DIN 51130 / DIN EN 16165 Ann. B ASTM D2047	Class DS R10 SCOF ≥0.5
Binder Content	ISO 10582	Type I
Abrasion Resistance	EN 649	Group T
Reaction to Fire	EN 13501-1 ASTM E648 CAN/ULC S-102.2	Class Bfl-S1 Class 1 FSV < 300; SDV < 500
Static Electrical Propensity	EN 1815	≤2.0kV Classified as 'antistatic'
Residual Indentation	ASTM F1914 ASTM F970 (Modified) ISO 24343-1	<0.005" <0.005" (750psi) ≤0.10mm
Castor Chair (continuous use)	ISO 4918 (EN 425)	Suitable
Dimensional Stability	ISO 23999 (EN 434)	≤0.40%
Flexibility	ISO 24344 (EN 435) ASTM F137	(Method A) Pass 20mm ø 0.25" Pass
Underfloor Heating		Suitable, max 27°C
Light Fastness	ISO 105-B02 (Method 3)	≥6

Resistance to Light	ASTM F1515	$\Delta E \leq 8.0$ - Meets
Resistance to Heat	ASTM F1514	$\Delta E \leq 8.0$ - Meets

## Sustainability

	Standard	Result
Breeam-NOR		Compliant
GreenTag	LCA Rate Silver Plus	GreenRate level A
EN 15804 EPD		Available
Recyclable		100%
Recycled Content		10%
REACH		Compliant
Indoor Air Comfort Gold		Eurofins certified product
FloorScore		Certified
Finnish M1 Classification		Certified
AgBB/ABG		Pass
Responsible Sourcing	BES 6001	Excellent

## Acoustic Performance

	Standard	Result
Impact Sound Reduction	ISO 10140-3	8dB

## Maintenance Performance

	Standard	Result
Resistance to Chemicals	ISO 26987 (EN 423) ASTM F925	Good resistance Good resistance

All Polyflor commercial sheet vinyl ranges provide a continuous, impervious and hygienic flooring solution which can be confidently cleaned in accordance with recommended maintenance procedures and approved maintenance products. The implementation of an effective cleaning regime is the most important defence against infection.

## Hygiene

	Standard	Result
Bacterial Resistance	ISO 846 Part C	Does not favour growth



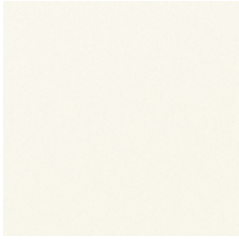
**Polyflor Nordic** • Kjelsåsveien 168 B, 0884 OSLO • Tel: +47 23 00 84 00 • Email: firmapost@polyflor.no • www.polyflor.no

**Polyflor Nordic Sweden AB** • Energigatan 9, 434 37 KUNGSBACKA • Tel: +46 (0) 300-15820 • Email: info@polyflor.se • www.polyflor.se

© At the time of writing and publication of sheet, all the information is specified correctly. The company reserves the right to change the specifications of this product at any time without prior notice to third parties.

# Bloc

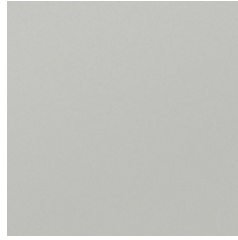
## RANGE SHADES



**Loft White 9931**  
NCS S 0502-G50Y  
w/r 9931 LRV 84



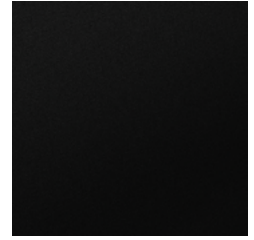
**Rock Salt 9932**  
NCS S 1502-G50Y  
w/r 9932 LRV 64



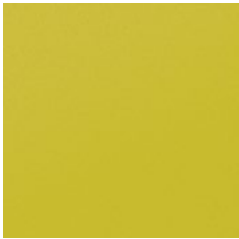
**Studio Grey 9933**  
NCS S 3000-N  
w/r 9933 LRV 45



**Urban Chic 9934**  
NCS S 5502-B  
w/r 9934 LRV 21



**Classic Black 9935**  
NCS S 8500-N  
w/r 9935 LRV 5



**Lime Crush 9940**  
NCS S 2060-G80Y  
w/r 9940 LRV 38



**Soft Moss 9942**  
NCS S 4040-G70Y  
w/r 9942 LRV 22



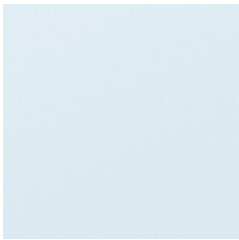
**Woodland Green 9941**  
NCS S 3060-G40Y  
w/r 9941 LRV 22



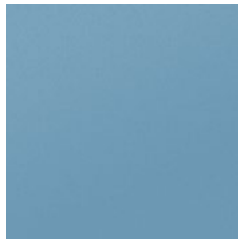
**Caramel Blush 9944**  
NCS S 2010-Y30R  
w/r 9944 LRV 53



**Clay Deep 9946**  
NCS S 5005-Y20R  
w/r 9946 LRV 25



**Cool Breeze 9936**  
NCS S 0515-R80B  
w/r 9936 LRV 71



**Nordic Sky 9937**  
NCS S 3030-R90B  
w/r 9937 LRV 28



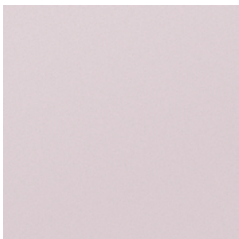
**Marine Blue 9939**  
NCS S 5040-R80B  
w/r 9939 LRV 9



**Lemon Punch 9947**  
NCS S 1080-Y  
w/r 9947 LRV 53



**Red Beacon 9948**  
NCS S 1080-Y80R  
w/r 9948 LRV 18



**Lilac Essence 9949**  
NCS S 1510-R40B  
w/r 9949 LRV 57

w/r - Weld Rod

LRV - Light Reflectance Value

NCS - Natural Colour System