

PRODUCT SPECIFICATION

Key Features

- > Wood, concrete & abstract designs
- > 19dB acoustic performance
- > High resistance to abrasion
- > Low VOC emissions
- > Suitable for commercial interiors
- > Low maintenance cost
- > Breeam-NOR compliant
- > Phthalate-free



Product Format	Standard	Result
Gauge	ISO 24346 (EN 428)	3.7mm
Wear Layer	ISO 24340 (EN 429)	0.65mm
Total Weight	ISO 23997 (EN 430)	2550g/m ²
Finish		PUR

Sheet Size	Size	Shades	Quantity per Box	Coverage per Box/Roll
Sheet	2m x 20m	36	-	40m ²

Performance Requirements	Standard	Result
General Performance	ISO 11638 (EN 651) ASTM F1303	Conforms Type I, Class I, Class C Backing
Use Area	ISO 10874 (EN 685)	23, 34, 42
Slip Resistance	EN 13893 DIN 51130 / DIN EN 16165 Ann. B AS 4586 ASTM D2047	Class DS R10 R10 SCOF ≥0.5
Binder Content	ISO 10582	Type I
Abrasion Resistance	EN 651	Group T
Reaction to Fire	EN 13501-1 ASTM E648 CAN/ULC S-102.2	Class Bfl-S1 Class 1 FSV < 300; SDV < 500
Static Electrical Propensity	EN 1815	≤2.0kV Classified as 'antistatic'
Residual Indentation	ASTM F1914 ASTM F970 (Modified) ISO 24343-1	≤0.005" ≤0.009" (750psi) ≤0.20mm
Castor Chair (continuous use)	ISO 4918 (EN 425)	Suitable
Dimensional Stability	ISO 23999 (EN 434)	≤0.40%
Flexibility	ISO 24344 (EN 435) ASTM F137	(Method A) Pass 20mm ø 0.25" Pass
Thermal Resistance	ISO 12667	0.0525m ² K/W
Underfloor Heating		Suitable, max 27°C

Light Fastness	ISO 105-B02 (Method 3)	≥6
Furniture Leg	ISO 16581 (EN 424)	Pass
Resistance to Light	ASTM F1515	$\Delta E \leq 8.0$ - Meets
Resistance to Heat	ASTM F1514	$\Delta E \leq 8.0$ - Meets

Sustainability

	Standard	Result
Breem-NOR		Compliant
GreenTag	LCA Rate Gold Plus	GreenRate level A
EN 15804 EPD		Available
Recyclable		100%
Recycled Content		10%
REACH		Compliant
Indoor Air Comfort Gold		Eurofins certified product
FloorScore		Certified
Finnish M1 Classification		Certified
AgBB/ABG		Pass
Responsible Sourcing	BES 6001	Excellent

Acoustic Performance

	Standard	Result
Impact Sound Reduction	ISO 10140-3	19dB
Sound Transmission Coefficient	ASTM E90/492	STC 56
Impact Insulation Class	ASTM E90/492	IIC 57

Maintenance Performance

	Standard	Result
Resistance to Chemicals	ISO 26987 (EN 423) ASTM F925	Good resistance Good resistance

All Polyflor commercial sheet vinyl ranges provide a continuous, impervious and hygienic flooring solution which can be confidently cleaned in accordance with recommended maintenance procedures and approved maintenance products. The implementation of an effective cleaning regime is the most important defence against infection.



Polyflor Nordic • Kjelsåsveien 168 B, 0884 OSLO • Tel: +47 23 00 84 00 • Email: firmapost@polyflor.no • www.polyflor.no

Polyflor Nordic Sweden AB • Energigatan 9, 434 37 KUNGSBACKA • Tel: +46 (0) 300-15820 • Email: info@polyflor.se • www.polyflor.se

© At the time of writing and publication of sheet, all the information is specified correctly. The company reserves the right to change the specifications of this product at any time without prior notice to third parties.

RANGE SHADES



Warm Limed Ash 9953
plank size in sheet: 166 x 1500mm
w/r 9832 LRV 34



Classic Limed Ash 9955
plank size in sheet: 166 x 1500mm
w/r 9833 LRV 49



Sun Bleached Oak 9952
plank size in sheet: 200 x 1500mm
w/r 9825 LRV 31



Blond Oak 9956
plank size in sheet: 167 x 1500mm
w/r 9820 LRV 28



Roasted Limed Ash 9954
plank size in sheet: 166 x 1500mm
w/r 9831 LRV 27



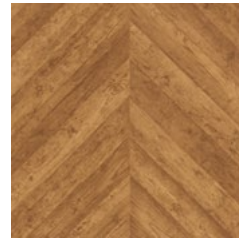
English Oak 9957
plank size in sheet: 200 x 1500mm
w/r 9823 LRV 24



Honey Oak 9959
plank size in sheet: 167 x 1500mm
w/r 9821 LRV 22



Toasted Oak 9960
plank size in sheet: 167 x 1500mm
w/r 9822 LRV 18



Reclaimed Chevron 9958
plank size in sheet: 120 x 700mm
w/r 9830 LRV 17



Bronzed Pine 9962
plank size in sheet: 166 x 1500mm
w/r 9835 LRV 14



Aged Oak 9961
plank size in sheet: 200 x 1500mm
w/r 9824 LRV 8



Smoked Oak 9963
plank size in sheet: 200 x 1500mm
w/r 9827 LRV 11



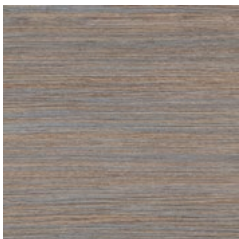
Silver Oak 9951
plank size in sheet: 200 x 1500mm
w/r 9826 LRV 28



Silvered Pine 9964
plank size in sheet: 166 x 1500mm
w/r 9836 LRV 17



Honey Beige 9985
NCS S 3005-Y50R
w/r 9869 LRV 29



Autumn Rain 9986
NCS S 5005-Y80R
w/r 9864 LRV 24

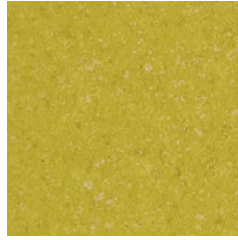
Silentflor



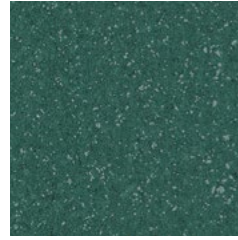
Burnt Orange 9981
NCS S 3040-Y40R
w/r 9848 LRV 24



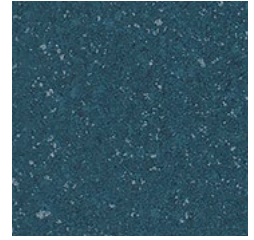
Flaxen 9979
NCS S 0560-Y
w/r 9849 LRV 44



Meadow 9980
NCS S 2050-G90Y
w/r 9850 LRV 32



Teal 9978
NCS S 6020-B70G
w/r 9851 LRV 11



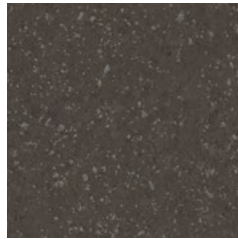
Steel Blue 9977
NCS S 6020-B10G
w/r 9852 LRV 10



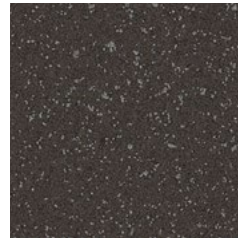
Moleskin 9975
NCS S 3005-Y20R
w/r 9841 LRV 28



Storm 9973
NCS S 3502-B
w/r 9845 LRV 26



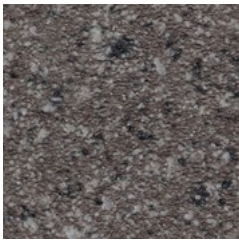
Taupe 9976
NCS S 7502-Y
w/r 9843 LRV 10



Jet 9974
NCS S 8000-N
w/r 9842 LRV 8



Zinc 9982
NCS S 3500-N
w/r 9804 LRV 37



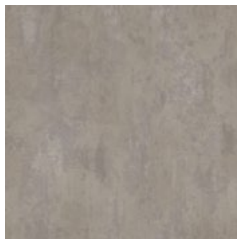
Onyx 9983
NCS S 7502-R
w/r 9805 LRV 14



Twilight 9984
NCS S 7005-Y20R
w/r 5086 LRV 14



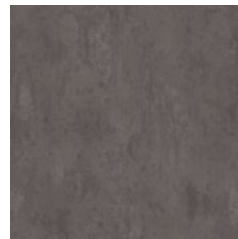
Light Grey Concrete 9965
NCS S 3000-N
w/r 9858 LRV 40



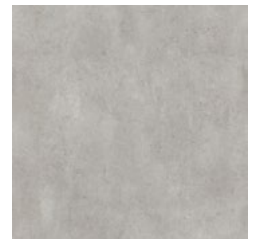
Warm Concrete 9967
NCS S 3502-R
w/r 9855 LRV 25



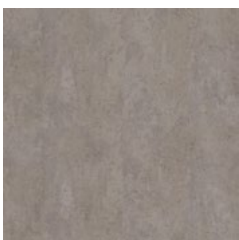
Cool Concrete 9966
NCS S 4500-N
w/r 9856 LRV 22



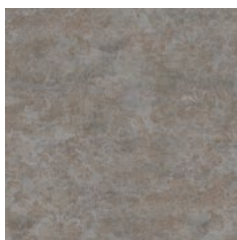
Dark Grey Concrete 9968
NCS S 6502-R
w/r 9857 LRV 13



Light Industrial Concrete 9969
NCS S 2500-N
w/r 9860 LRV 35



Dark Industrial Concrete 9970
NCS S 4502-R
w/r 9859 LRV 24



Copper Ornamental 9971
NCS S 5502-R
w/r 9861 LRV 19



Onyx Ornamental 9972
NCS S 7000-N
w/r 9862 LRV 11

w/r - Weld Rod

LRV - Light Reflectance Value

NCS - Natural Colour System