

# Expona Flow

## PRODUCT SPECIFICATION

### Key Features

- > Contemporary wood, stone & abstract designs
- > Durable vinyl sheet format
- > Low maintenance cost
- > Heavy commercial installations
- > Breeam-NOR compliant
- > Phthalate-free



Product Format	Standard	Result
Gauge	ISO 24346 (EN 428)	2.0mm
Wear Layer	ISO 24340 (EN 429)	0.70mm
Total Weight	ISO 23997 (EN 430)	2660g/m <sup>2</sup>
Finish		PUR

Sheet Size	Size	Shades	Quantity per Box	Coverage per Box/Roll
Sheet	2m x 20m	50	-	40m <sup>2</sup>

Performance Requirements	Standard	Result
General Performance	ISO 10582 (EN 649) ASTM F1303	Conforms Type I, Grade I, Class B Backing
Use Area	ISO 10874 (EN 685)	23, 34, 43
Slip Resistance	EN 13893 DIN 51130 / DIN EN 16165 Ann. B AS 4586 ASTM D2047	Class DS R10 R10 SCOF ≥0.5
Binder Content	ISO 10582	Type I
Abrasion Resistance	EN 649	Group T
Reaction to Fire	EN 13501-1 ASTM E648 CAN/ULC S-102.2	Class Bfl-S1 Class 1 FSV < 300; SDV < 500
Static Electrical Propensity	EN 1815	≤2.0kV Classified as 'antistatic'
Residual Indentation	ASTM F1914 ASTM F970 (Modified) ISO 24343-1	<0.005" <0.005" (750psi) ≤0.10mm
Castor Chair (continuous use)	ISO 4918 (EN 425)	Suitable
Dimensional Stability	ISO 23999 (EN 434)	≤0.40%
Flexibility	ISO 24344 (EN 435) ASTM F137	(Method A) Pass 20mm ø 0.25" Pass
Underfloor Heating		Suitable, max 27°C
Light Fastness	ISO 105-B02 (Method 3)	≥6

Resistance to Light	ASTM F1515	$\Delta E \leq 8.0$ - Meets
Resistance to Heat	ASTM F1514	$\Delta E \leq 8.0$ - Meets

## Sustainability

	Standard	Result
Breeam-NOR		Compliant
GreenTag	LCA Rate Gold Plus	GreenRate level A
EN 15804 EPD		Available
Recyclable		100%
Recycled Content		10%
REACH		Compliant
Indoor Air Comfort Gold		Eurofins certified product
FloorScore		Certified
Finnish M1 Classification		Certified
AgBB/ABG		Pass
Responsible Sourcing	BES 6001	Excellent

## Acoustic Performance

	Standard	Result
Impact Sound Reduction	ISO 10140-3	8dB

## Maintenance Performance

	Standard	Result
Resistance to Chemicals	ISO 26987 (EN 423) ASTM F925	Good resistance Good resistance

All Polyflor commercial sheet vinyl ranges provide a continuous, impervious and hygienic flooring solution which can be confidently cleaned in accordance with recommended maintenance procedures and approved maintenance products. The implementation of an effective cleaning regime is the most important defence against infection.

## Hygiene

	Standard	Result
Bacterial Resistance	ISO 846 Part C	Does not favour growth



**Polyflor Nordic** • Kjelsåsveien 168 B, 0884 OSLO • Tel: +47 23 00 84 00 • Email: firmapost@polyflor.no • www.polyflor.no

**Polyflor Nordic Sweden AB** • Energigatan 9, 434 37 KUNGSBACKA • Tel: +46 (0) 300-15820 • Email: info@polyflor.se • www.polyflor.se

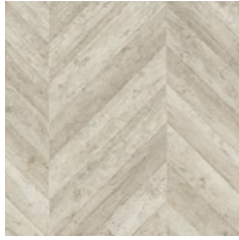
© At the time of writing and publication of sheet, all the information is specified correctly. The company reserves the right to change the specifications of this product at any time without prior notice to third parties.

# Expona Flow

## RANGE SHADES



**White Pine 9834**  
plank size in sheet: 166 x 1500mm  
w/r 9834 LRV 57



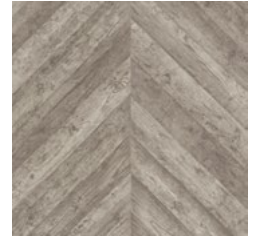
**Painted Chevron 9828**  
plank size in sheet: 120 x 700mm  
w/r 9828 LRV 43



**Sun Bleached Oak 9825**  
plank size in sheet: 200 x 1500mm  
w/r 9825 LRV 31



**Silver Oak 9826**  
plank size in sheet: 200 x 1500mm  
w/r 9826 LRV 28



**Grey Weathered Chevron 9829**  
plank size in sheet: 120 x 700mm  
w/r 9829 LRV 26



**Classic Limed Ash 9833**  
plank size in sheet: 166 x 1500mm  
w/r 9833 LRV 49



**Warm Limed Ash 9832**  
plank size in sheet: 166 x 1500mm  
w/r 9832 LRV 34



**Blond Pine 9839**  
plank size in sheet: 166 x 1500mm  
w/r 9839 LRV 37



**Blond Oak 9820**  
plank size in sheet: 167 x 1500mm  
w/r 9820 LRV 28



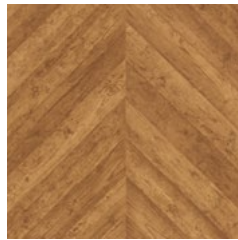
**Roasted Limed Ash 9831**  
plank size in sheet: 166 x 1500mm  
w/r 9831 LRV 27



**English Oak 9823**  
plank size in sheet: 200 x 1500mm  
w/r 9823 LRV 24



**Golden Pine 9838**  
plank size in sheet: 166 x 1500mm  
w/r 9838 LRV 25



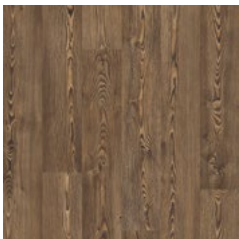
**Reclaimed Chevron 9830**  
plank size in sheet: 120 x 700mm  
w/r 9830 LRV 17



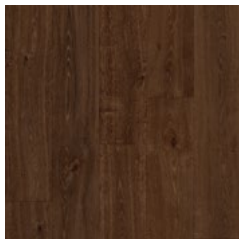
**Honey Oak 9821**  
plank size in sheet: 167 x 1500mm  
w/r 9821 LRV 22



**Toasted Oak 9822**  
plank size in sheet: 167 x 1500mm  
w/r 9822 LRV 18



**Bronzed Pine 9835**  
plank size in sheet: 166 x 1500mm  
w/r 9835 LRV 14



**Aged Oak 9824**  
plank size in sheet: 200 x 1500mm  
w/r 9824 LRV 8



**Silvered Pine 9836**  
plank size in sheet: 166 x 1500mm  
w/r 9836 LRV 17



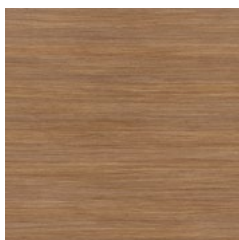
**Smoked Oak 9827**  
plank size in sheet: 200 x 1500mm  
w/r 9827 LRV 11



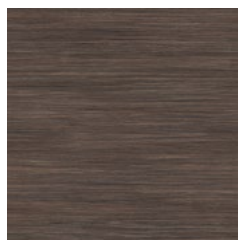
**Charcoal Pine 9837**  
plank size in sheet: 166 x 1500mm  
w/r 9837 LRV 13



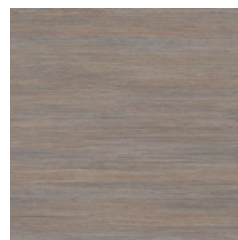
**Honey Beige 9869**  
NCS S 3005-Y50R  
w/r 9869 LRV 29



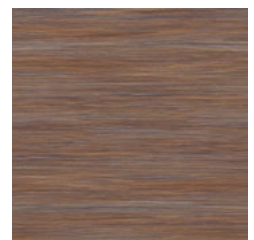
**Auburn 9863**  
NCS S 5020-Y30R  
w/r 9863 LRV 17



**Espresso 9867**  
NCS S 7005-Y80R  
w/r 9867 LRV 10



**Autumn Rain 9864**  
NCS S 5005-Y80R  
w/r 9864 LRV 24



**Firelight 9868**  
NCS S 5020-Y40R  
w/r 9868 LRV 16

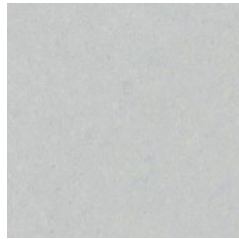
**Expona Flow**



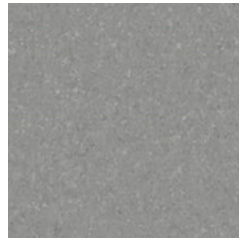
**Night Sky 9865**  
NCS S 7000-N  
w/r 9865 LRV 13



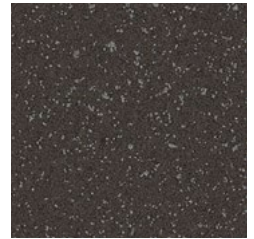
**Raven 9866**  
NCS S 7502-R  
w/r 9866 LRV 12



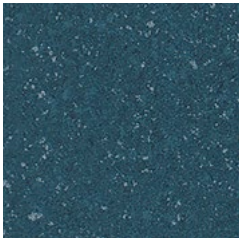
**Luna 9844**  
NCS S 1502-B  
w/r 9844 LRV 48



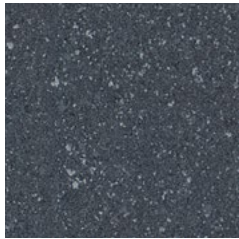
**Storm 9845**  
NCS S 3502-B  
w/r 9845 LRV 26



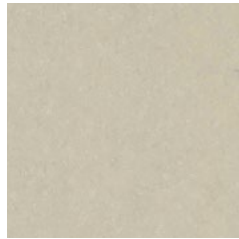
**Jet 9842**  
NCS S 8000-N  
w/r 9842 LRV 8



**Steel Blue 9852**  
NCS S 6020-B10G  
w/r 9852 LRV 10



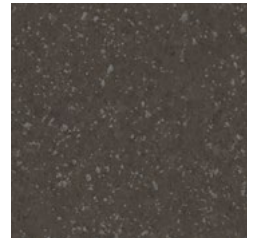
**Midnight 9854**  
NCS S 7005-R80B  
w/r 9854 LRV 10



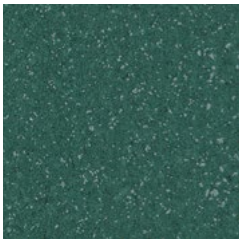
**Oatmeal 9840**  
NCS S 2005-G90Y  
w/r 9840 LRV 43



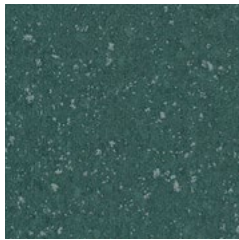
**Moleskin 9841**  
NCS S 3005-Y20R  
w/r 9841 LRV 28



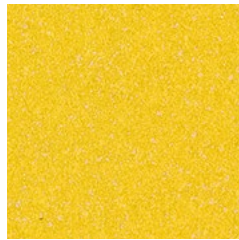
**Taupe 9843**  
NCS S 7502-Y  
w/r 9843 LRV 10



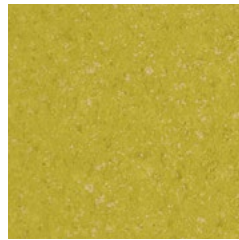
**Teal 9851**  
NCS S 6020-B70G  
w/r 9851 LRV 11



**Woodland 9853**  
NCS S 6020-B50G  
w/r 9853 LRV 11



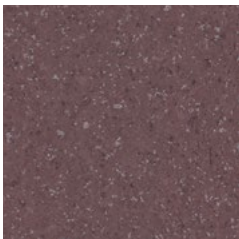
**Flaxen 9849**  
NCS S 0560-Y  
w/r 9849 LRV 44



**Meadow 9850**  
NCS S 2050-G90Y  
w/r 9850 LRV 32



**Burnt Orange 9848**  
NCS S 3040-Y40R  
w/r 9848 LRV 24



**Mulberry 9846**  
NCS S 6010-R30B  
w/r 9846 LRV 13



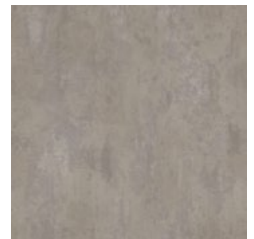
**Plum 9847**  
NCS S 6020-R10B  
w/r 9847 LRV 9



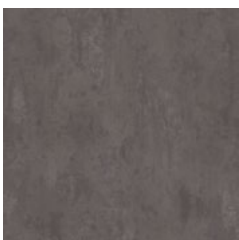
**Light Grey Concrete 9858**  
NCS S 3000-N  
w/r 9858 LRV 40



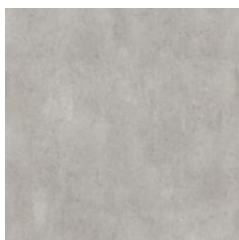
**Cool Concrete 9856**  
NCS S 4500-N  
w/r 9856 LRV 22



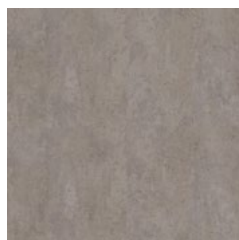
**Warm Concrete 9855**  
NCS S 3502-R  
w/r 9855 LRV 25



**Dark Grey Concrete 9857**  
NCS S 6502-R  
w/r 9857 LRV 13



**Light Industrial Concrete 9860**  
NCS S 2500-N  
w/r 9860 LRV 35



**Dark Industrial Concrete 9859**  
NCS S 4502-R  
w/r 9859 LRV 24



**Copper Ornamental 9861**  
NCS S 5502-R  
w/r 9861 LRV 19



**Onyx Ornamental 9862**  
NCS S 7000-N  
w/r 9862 LRV 11

w/r - Weld Rod

LRV - Light Reflectance Value

NCS - Natural Colour System