

VORWERK flooring ESSENTIAL LINE ★
VORWERK flooring SUPERIOR LINE ★★
VORWERK flooring **EXCLUSIVE LINE** ★★★

3 PRODUKTLINIEN. 3 STILWELTEN. MILLIONEN VON MÖGLICHKEITEN.
3 PRODUCT LINES. 3 STYLE WORLDS. MILLIONS OF POSSIBILITIES.



VORWERK flooring

EXCLUSIVE LINE ★★★

EXCLUSIVE 1015



 *Broadloom*



EINZIGARTIGE BODENBELÄGE *seit 1883.*
UNIQUE FLOOR COVERINGS *since 1883.*

IT'S A VORWERK! WHEN MILLIONS OF SATISFIED CUSTOMERS HAVE FAVOURED ONE SINCE 1883.

For more than 130 years, Vorwerk has been the most desirable brand for floor coverings. Millions of satisfied customers vouch for the fact, all over the world. The reason for this is clear: Vorwerk is the only brand where they find this one-of-a-kind mixture of **superior quality, sustainable innovations** and **global award-winning design**. *We're going to prove it on the following pages.*



IT'S A VORWERK! WHEN SUPERIOR QUALITY, SUSTAINABLE INNOVATIONS AND GLOBAL AWARD-WINNING DESIGN MEET UNIQUE FLOOR COVERINGS.

**IT'S A VORWERK!
WHEN SUPERIOR QUALITY
ORIGINATES BY TESTING AND
TESTING, AGAIN AND AGAIN.**

Because quality at Vorwerk is our highest priority, we monitor all of our products by carrying out more than 15,000,000 individual tests every year. We also have a “zero-errors tolerance” – from production to delivery. We are the only company doing this – and with success, as the numerous independent environmental and quality labels that our products have been awarded show.

**IT'S A VORWERK!
WHEN SUSTAINABLE
INNOVATIONS LEAD THE WAY
FOR THE WHOLE INDUSTRY.**

Affordable floor coverings for everyone (1883), the fluffy carpet at home (1955), the ecological carpet backing (1994) – revolutionary for people with allergies – or the first free-form carpet tile (2011) for an abundance of brand-new freedom in floor design. Time and again, it is the Vorwerk brand that perceives people's wishes and sets trends on the market to fulfil them.

**IT'S A VORWERK!
WHEN GLOBAL AWARD-WINNING
DESIGN KEEPS ON WINNING MORE
AND MORE PRIZES.**

World-famous names, such as Roy Lichtenstein or Karl Lagerfeld, have designed for Vorwerk. And the journey continues. To accomplish this we picture the floor covering as a canvas just waiting to be painted. Whether in a timeless or contemporary vein, reserved or progressive. The design world values this, which can be seen in the numerous awards we receive every year.



IT'S A VORWERK! WHEN THE FLOOR TURNS INTO AN ART OF CRAFTSMANSHIP THANKS TO MORE THAN 130 YEARS OF EXPERIENCE.

More than 130 years ago carpets were a luxury product. Driven by the idea of manufacturing the best floor coverings, our founding fathers brought British technology to Germany. The aim was to make carpets accessible to everybody: in numerous designs and the highest quality.



EINZIGARTIGE BODENBELÄGE *seit 1883.*
UNIQUE FLOOR COVERINGS *since 1883.*

IT'S A VORWERK! WHEN MILLIONS OF POSSIBILITIES MAKE MILLIONS OF WISHES POSSIBLE.

From timeless to trendy, from low key to striking, all products are available in 15 colours, lots of them even in 25 or 30. If, contrary to expectations, the right nuance is not among them, our “Made-to-Order Tailoring” is able to make any desired colour you choose.*

*We produce exclusively for you starting at a quantity of 400 square metres tuft and 100 square metres woven.



IT'S A VORWERK!

WHEN WE CAN PROVE OUR CREDO "UNIQUE FLOOR COVERINGS SINCE 1883" WITH 3 PRODUCT LINES, 3 STYLE WORLDS AND MILLIONS OF POSSIBILITIES.

Our unique range of products is the guarantee that you will find the most beautiful and best floor coverings at Vorwerk. Our product lines Vorwerk flooring ESSENTIAL LINE, Vorwerk flooring SUPERIOR LINE and Vorwerk flooring EXCLUSIVE LINE with our style worlds NATURE | Design, CLASSIC | Design or ART | Design fulfil nearly every wish.



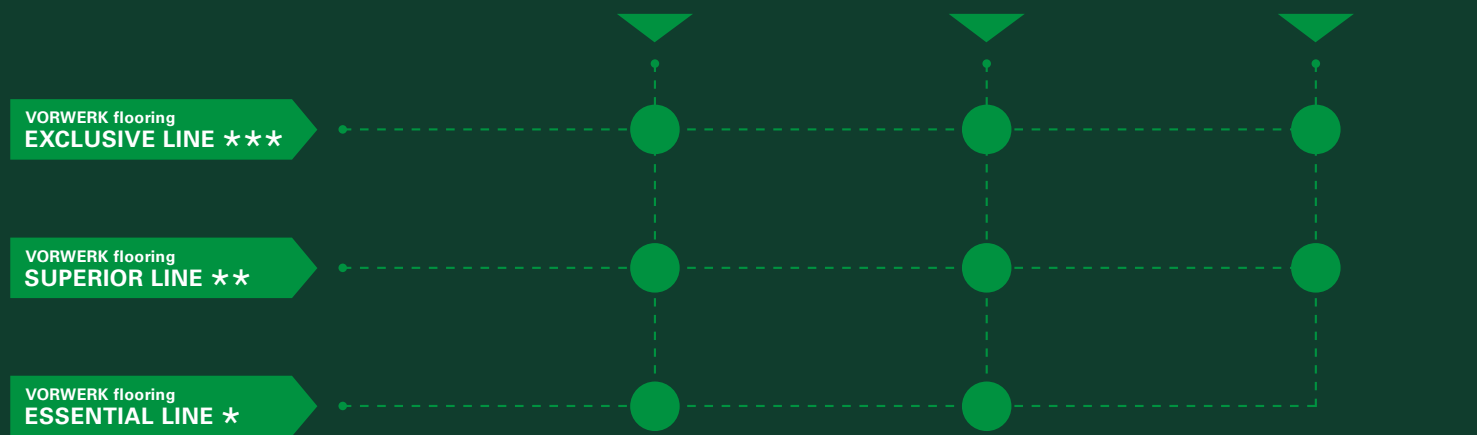
NATURE | Design



CLASSIC | Design



ART | Design



EINZIGARTIGE BODENBELÄGE *seit 1883.*
UNIQUE FLOOR COVERINGS *since 1883.*

3 PRODUCT LINES

Whether broadloom, tile or free-form – with our three product lines **Vorwerk flooring ESSENTIAL LINE**, **Vorwerk flooring SUPERIOR LINE** and **Vorwerk flooring EXCLUSIVE LINE**, you define the material, the feel, the construction design and resilience of your new Vorwerk, from high to the very highest standards.

Vorwerk flooring ESSENTIAL LINE.

The product line which sets standards right from the start.

Vorwerk flooring SUPERIOR LINE.

The product line which raises the high level of comfort even higher.

Vorwerk flooring EXCLUSIVE LINE.

The product line which delivers superlatives that measure up to our customers' demands.

3 STYLE WORLDS

Whether timelessly elegant, inspired by nature or artistically offbeat, with **NATURE | Design**, **CLASSIC | Design** and **ART | Design**, you define the attitude towards life on your Vorwerk. Regardless of whether you prefer to enjoy it at home or in the office.

NATURE | Design.

Inspired by nature.

Interpreted by Vorwerk.

CLASSIC | Design.

Stylish at home and timeless.

Interpreted by Vorwerk.

ART | Design.

Award-winning, limited and simply unique.

Interpreted by Vorwerk.

IT'S AN EXCLUSIVE 1015! WHEN A HARD FLOOR FEELS SURPRISINGLY LIKE A TEXTILE FLOOR.

1. This flat-woven design is truly exciting. Thanks to the ingenious integration of the pile material, exceptional structures and effects are created.
2. They remain robust for many years, as solely high-quality, brand-name polyamide fibres are used to manufacture them.
3. Part of the standard material is recycled spin-drawn yarn which is dyed during the spinning process in order to save an energy-intensive process step. Of course, they do not include latex – giving people and nature an ever-lasting good feeling.

IT'S A VORWERK! WHEN THE ALL-INCLUSIVE DELIVERY PROMISE IS KEPT.

1 Our 1st delivery promise:

We at Vorwerk flooring promise that we will ship out all **in-stock items** of up to **50 square metres** within **three days**, and up to **600 square metres** within **three weeks** (tuft) or **four weeks** (woven and tiles) after receipt of the order.

2 Our 2nd delivery promise:

We at Vorwerk flooring promise that we will ship out orders of up to **300 square metres** within **three days** after receipt of the order.

3 Our 3rd delivery promise:

We at Vorwerk flooring promise that we will provide a delivery date and **minimum quantity** after **three days** at the latest for **none-stock items, custom quantities** or **special colours, and special construction designs** within **eight days**.

Take us at our word.



CLASSIC | Design

EXCLUSIVE 1015



*Stylish at home and timeless.
Interpreted by Vorwerk.*



Design 8257



5V62



Design 8257



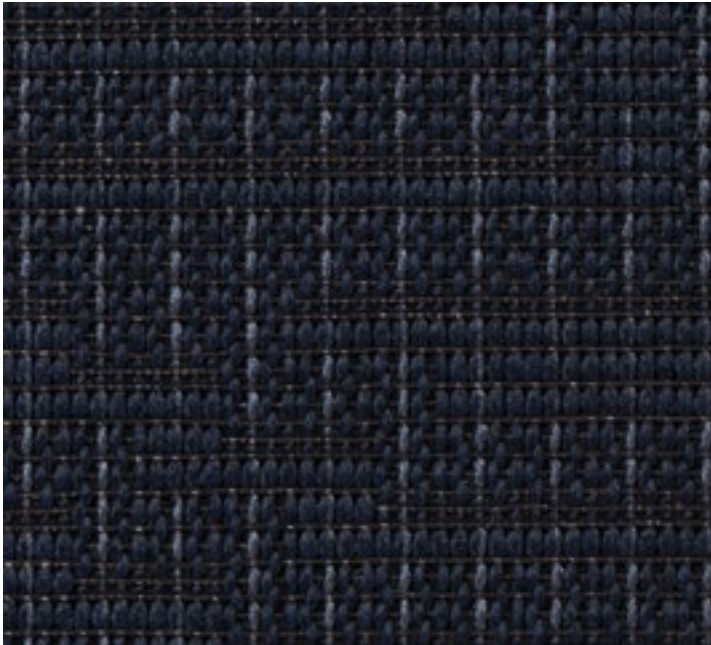
7F99



Design 8257



5V60



Design 8257

3N81



Design: 8257, Rapport: approx. w 100 x | 94.5 cm



Exclusive 1015, 7F99

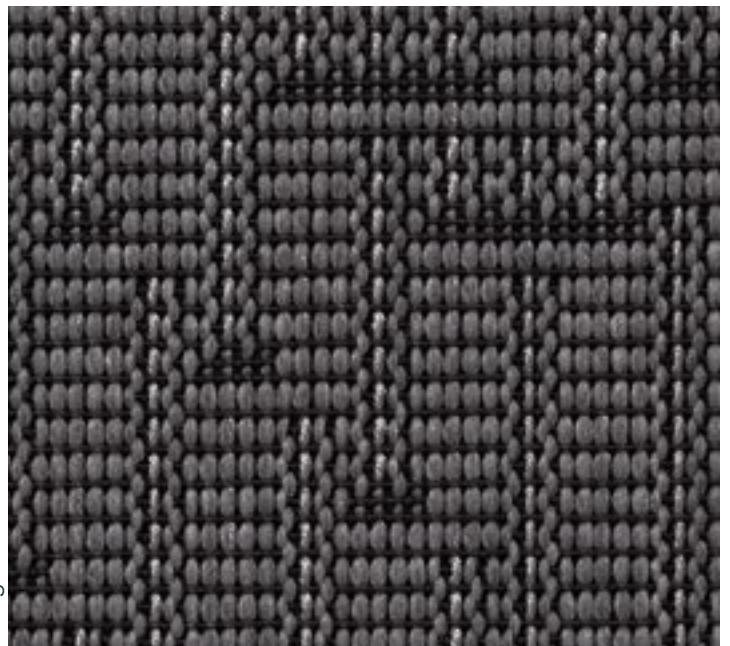


Design 8257

9F09



Design 8257



5V61



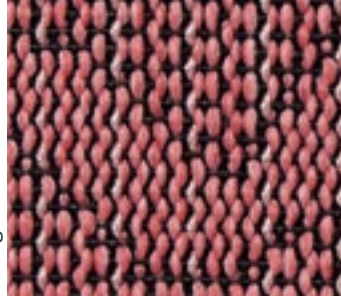
EXCLUSIVE 1015



Award-winning, limited and simply unique.
Interpreted by Vorwerk.



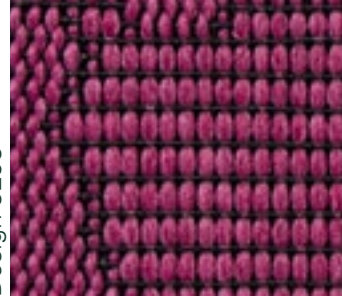
Design 8264



1M55



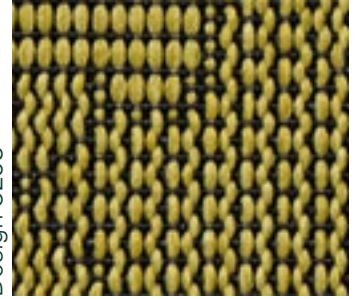
Design 8253



1M45



Design 8253



2F05



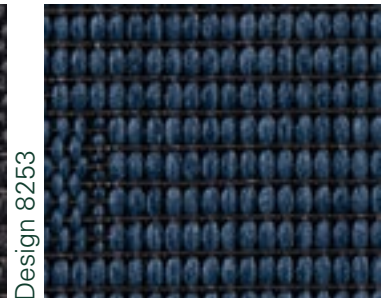
Design: 8264, Rapport: approx. w 100 x l 131.5 cm

Exclusive 1015, 5V57



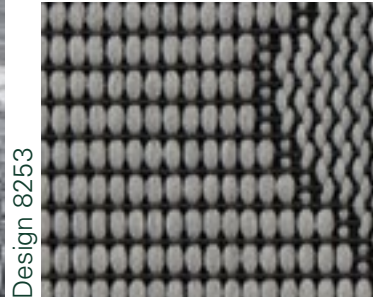
Design 8253

9F25



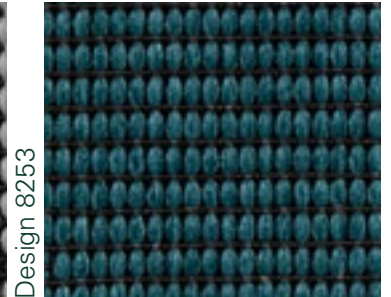
Design 8253

3P12



Design 8253

5V75



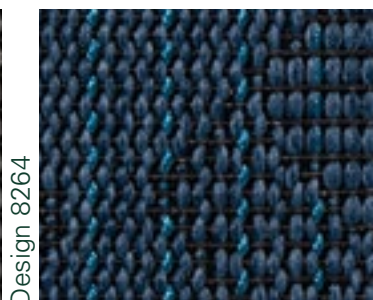
Design 8253

3P14



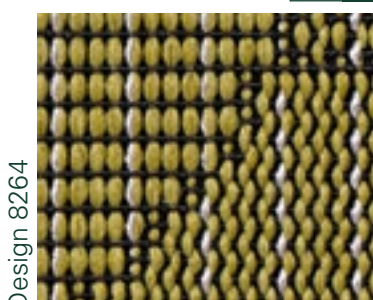
Design 8264

5V57



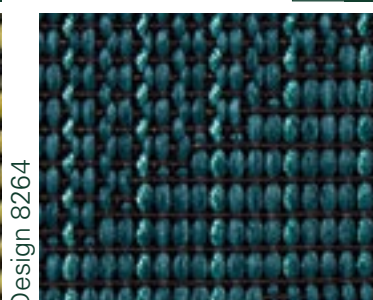
Design 8264

3P11



Design 8264

2F04



Design 8264

3P13



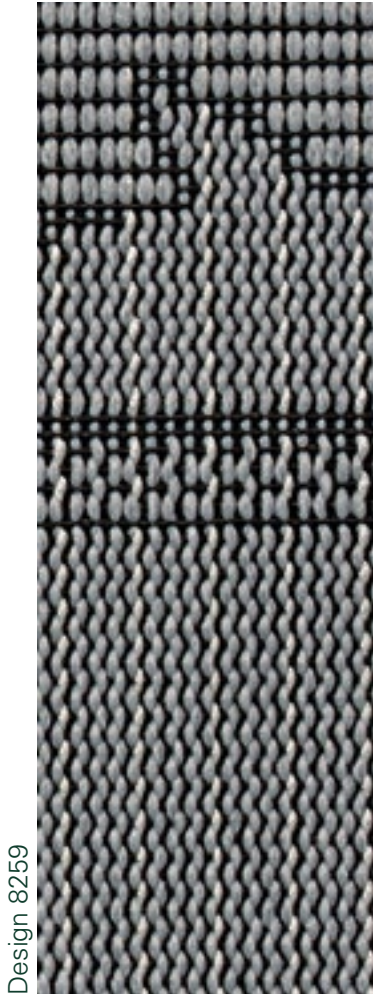
Design: 8253, Rapport: approx. w 100 x l 131.5 cm

Exclusive 1015, 3P14

EXCLUSIVE 1015

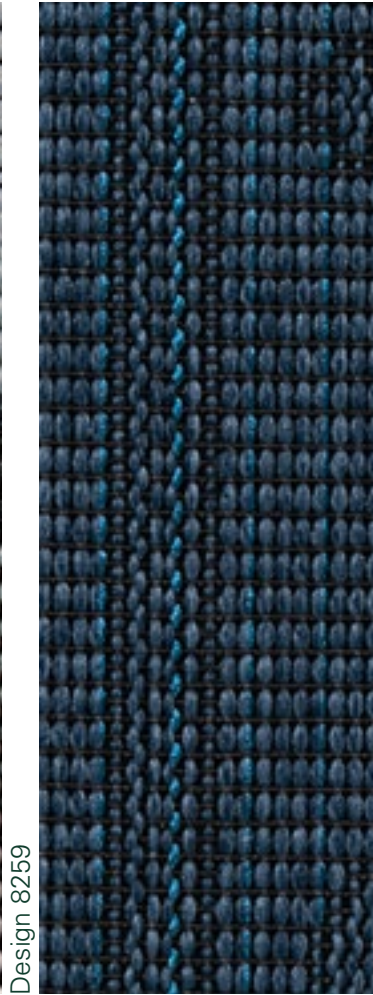


Award-winning, limited and simply unique.
Interpreted by Vorwerk.



Design 8259

5W16



Design 8259

3P10



Design: 8263, Rapport: approx. w 200 x l 200 cm

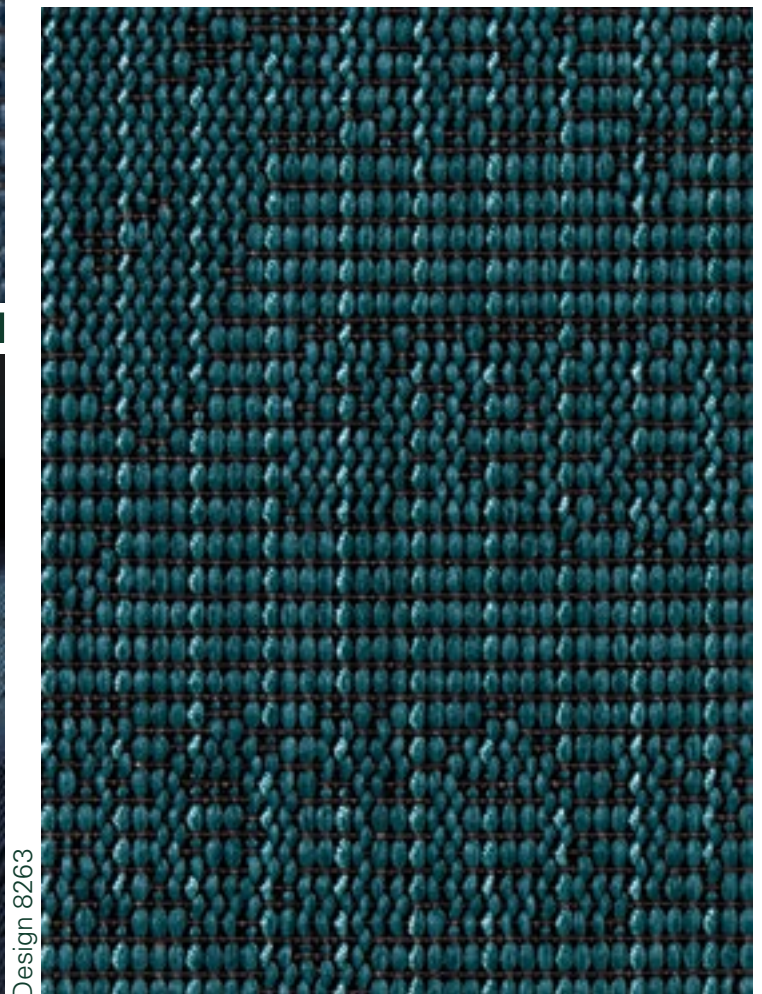


Exclusive 1015, 3P15



Design: 8259, Rapport: approx. w 200 x l 185.5 cm

Exclusive 1015, 3P10



Design 8263

3P15



EXCLUSIVE 1015



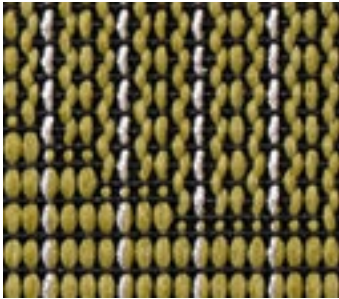
Award-winning, limited and simply unique.
Interpreted by Vorwerk.

Design: 8258, Rapport: approx. w 200 x l 200 cm



Exclusive 1015, 2F06

Design 8258



2F06



Design 8258



5W15

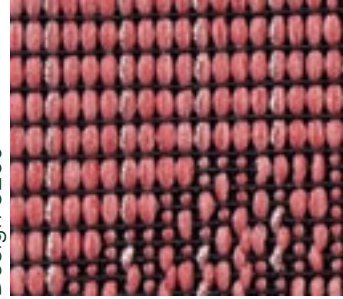


Design: 8260, Rapport: approx. w 200 x l 185.5 cm



Exclusive 1015, 1M56

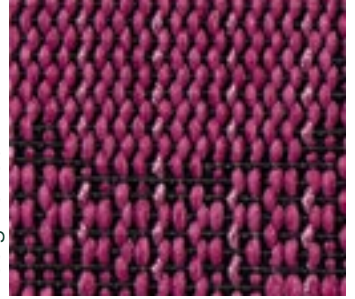
Design 8260



1M56



Design 8260



1M46

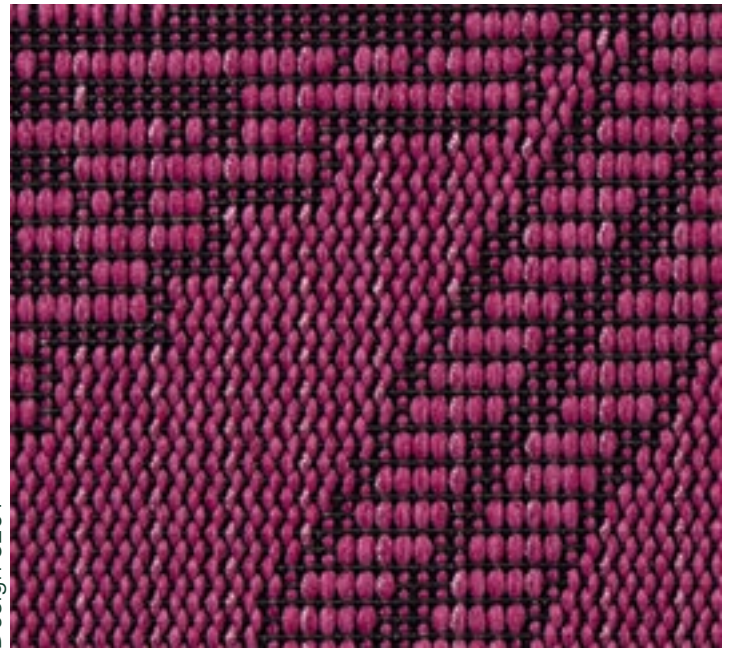


Design: 8261, Rapport: approx. w 200 x l 185.5 cm



Exclusive 1015, 1M58

Design 8261



1M58



NOTES

EXCLUSIVE 1015

TECHNICAL INFORMATION



Broadloom

Construction

Patterned flatweave

Pile material

100% PA 6.6

Formats

approx. 200 cm

Durability rating

EN 1307

extreme 33

Number of tufts

EN 1307

approx. 1088 dm²

Total thickness

EN 1307

approx. 2.4 mm

Pile weight

EN 1307

approx. 330 g/m²

Total weight

EN 1307

approx. 1170 g/m²

Fire rating

DIN EN 13501-1

C_{fl}-s1, glued with Henkel T410

Impact noise insulation

DIN EN ISO 10140

≥ 10 dB

Additional properties



CE

18

Vorwerk & Co. Teppichwerke
GmbH & Co. KG
Kuhlmannstrasse 11
D - 31785 Hameln

Webartikel Schnittfestappretur
EN 1307

DOP: 1062#8+9/521+529



EN 14041:2004/AC:2006

1658

Textile floor covering to be
used within a building



In the course of constant further development and quality improvement, we reserve the right to change technical data without prior notice. Technical data sheets, installation instructions, recommendations for cleaning, care and maintenance and texts for tenders can be found at: www.vorwerk-carpet.com



**Vorwerk & Co. Teppichwerke
GmbH & Co. KG**
Kuhlmannstrasse 11
31785 Hameln
Germany

Telephone:

+49 (0) 5151 1030

Telephone sales + sample service:

+49 (0) 5151 103 734

info@vorwerk-teppich.de

www.vorwerk-carpet.com