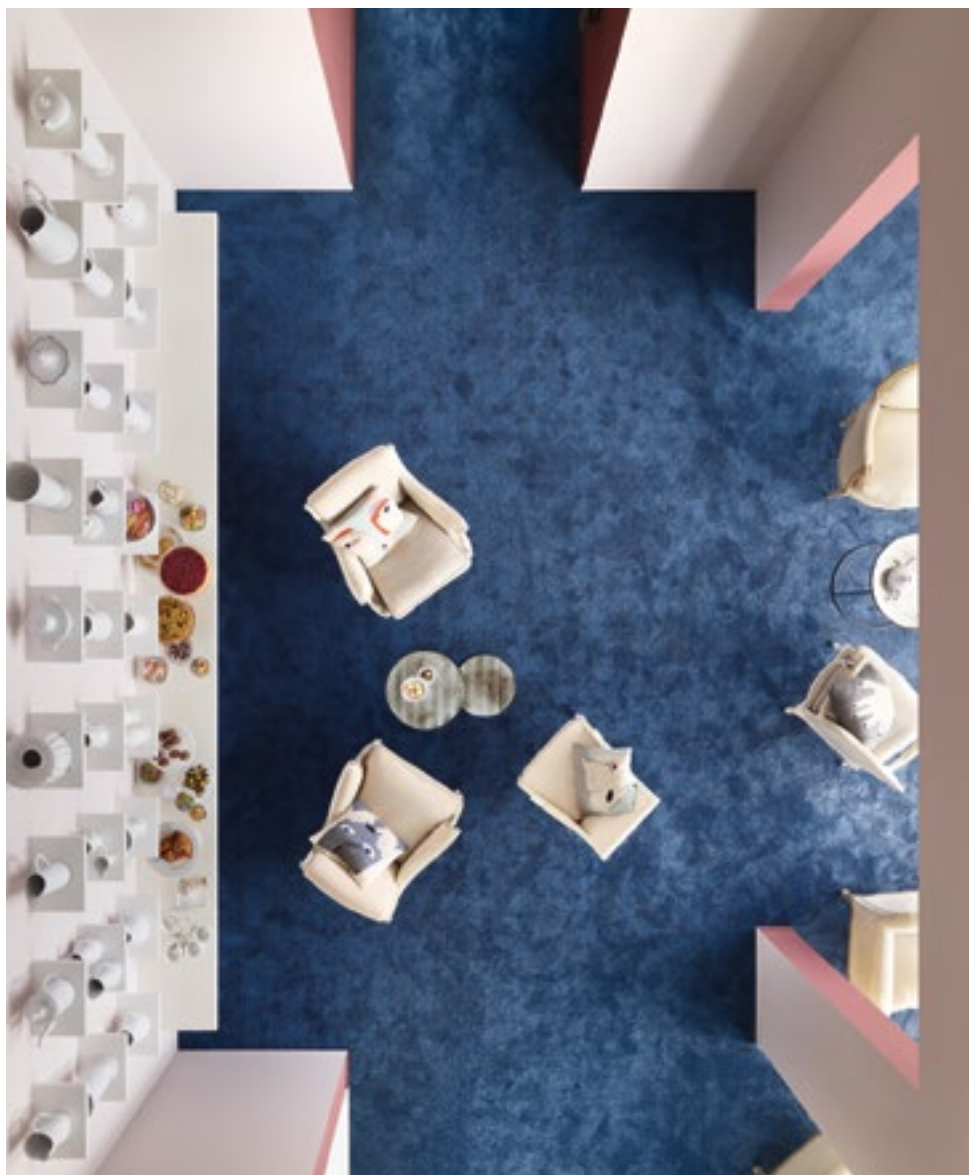


VORWERK flooring ESSENTIAL LINE ★
VORWERK flooring **SUPERIOR LINE** ★★
VORWERK flooring EXCLUSIVE LINE ★★★

3 PRODUKTLINIEN. 3 STILWELTEN. MILLIONEN VON MÖGLICHKEITEN.
3 PRODUCT LINES. 3 STYLE WORLDS. MILLIONS OF POSSIBILITIES.



VORWERK flooring

SUPERIOR LINE ★★

SUPERIOR 1041



Broadloom



EINZIGARTIGE BODENBELÄGE *seit 1883.*
UNIQUE FLOOR COVERINGS *since 1883.*

IT'S A VORWERK! WHEN MILLIONS OF SATISFIED CUSTOMERS HAVE FAVOURED ONE SINCE 1883.

For more than 130 years, Vorwerk has been the most desirable brand for floor coverings.

Millions of satisfied customers vouch for the fact, all over the world. The reason for this is clear: Vorwerk is the only brand where they find this one-of-a-kind mixture of **superior quality, sustainable innovations** and **global award-winning design**. *We're going to prove it on the following pages.*



IT'S A VORWERK! WHEN SUPERIOR QUALITY, SUSTAINABLE INNOVATIONS AND GLOBAL AWARD-WINNING DESIGN MEET UNIQUE FLOOR COVERINGS.

**IT'S A VORWERK!
WHEN SUPERIOR QUALITY
ORIGINATES BY TESTING AND
TESTING, AGAIN AND AGAIN.**

Because quality at Vorwerk is our highest priority, we monitor all of our products by carrying out more than 15,000,000 individual tests every year. We also have a "zero-errors tolerance" – from production to delivery. We are the only company doing this – and with success, as the numerous independent environmental and quality labels that our products have been awarded show.

**IT'S A VORWERK!
WHEN SUSTAINABLE
INNOVATIONS LEAD THE WAY
FOR THE WHOLE INDUSTRY.**

Affordable floor coverings for everyone (1883), the fluffy carpet at home (1955), the ecological carpet backing (1994) – revolutionary for people with allergies – or the first free-form carpet tile (2011) for an abundance of brand-new freedom in floor design. Time and again, it is the Vorwerk brand that perceives people's wishes and sets trends on the market to fulfil them.

**IT'S A VORWERK!
WHEN GLOBAL AWARD-WINNING
DESIGN KEEPS ON WINNING MORE
AND MORE PRIZES.**

World-famous names, such as Roy Lichtenstein or Karl Lagerfeld, have designed for Vorwerk. And the journey continues. To accomplish this we picture the floor covering as a canvas just waiting to be painted. Whether in a timeless or contemporary vein, reserved or progressive. The design world values this, which can be seen in the numerous awards we receive every year.



**IT'S A VORWERK!
WHEN THE FLOOR TURNS INTO AN ART OF
CRAFTSMANSHIP THANKS TO MORE THAN
130 YEARS OF EXPERIENCE.**

More than 130 years ago carpets were a luxury product. Driven by the idea of manufacturing the best floor coverings, our founding fathers brought British technology to Germany. The aim was to make carpets accessible to everybody: in numerous designs and the highest quality.



**IT'S A VORWERK!
WHEN MILLIONS OF POSSIBILITIES MAKE
MILLIONS OF WISHES POSSIBLE.**

From timeless to trendy, from low key to striking, all products are available in 15 colours, lots of them even in 25 or 30. If, contrary to expectations, the right nuance is not among them, our “Made-to-Order Tailoring” is able to make any desired colour you choose.*

*We produce exclusively for you starting at a quantity of 400 square metres tuft and 100 square metres woven.



IT'S A VORWERK! WHEN WE CAN PROVE OUR CREDO "UNIQUE FLOOR COVERINGS SINCE 1883" WITH 3 PRODUCT LINES, 3 STYLE WORLDS AND MILLIONS OF POSSIBILITIES.

Our unique range of products is the guarantee that you will find the most beautiful and best floor coverings at Vorwerk. Our product lines Vorwerk flooring ESSENTIAL LINE, Vorwerk flooring SUPERIOR LINE and Vorwerk flooring EXCLUSIVE LINE with our style worlds NATURE | Design, CLASSIC | Design or ART | Design fulfil nearly every wish.

3 PRODUCT LINES

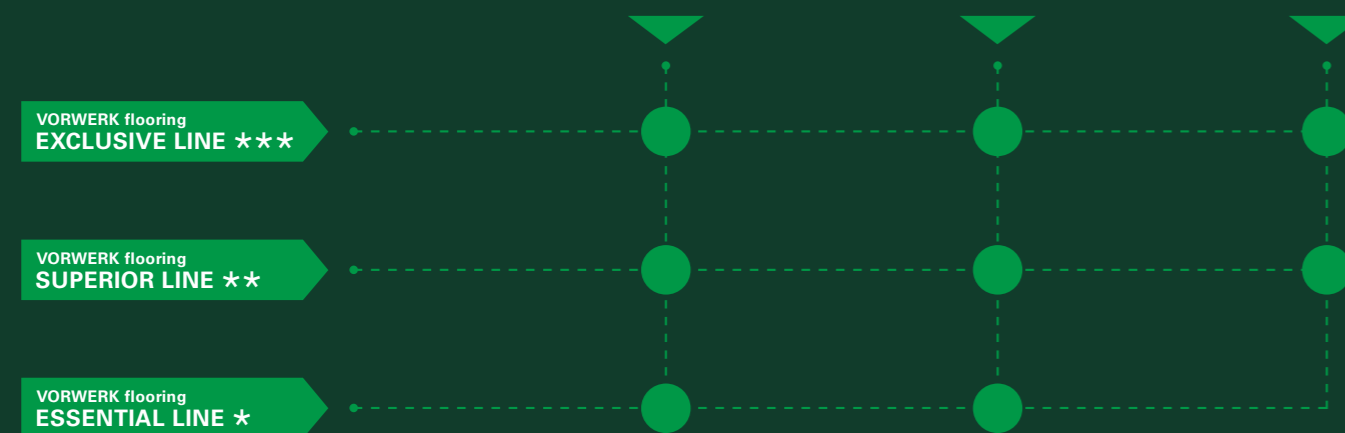
3 STYLE WORLDS



NATURE | Design

CLASSIC | Design

ART | Design



Whether broadloom, tile or free-form – with our three product lines Vorwerk flooring ESSENTIAL LINE, Vorwerk flooring SUPERIOR LINE and Vorwerk flooring EXCLUSIVE LINE, you define the material, the feel, the construction design and resilience of your new Vorwerk, from high to the very highest standards.

Vorwerk flooring ESSENTIAL LINE.
The product line which sets standards right from the start.

Vorwerk flooring SUPERIOR LINE.
The product line which raises the high level of comfort even higher.

Vorwerk flooring EXCLUSIVE LINE.
The product line which delivers superlatives that measure up to our customers' demands.

Whether timelessly elegant, inspired by nature or artistically offbeat, with NATURE | Design, CLASSIC | Design and ART | Design, you define the attitude towards life on your Vorwerk. Regardless of whether you prefer to enjoy it at home or in the office.

NATURE | Design.
Inspired by nature.
Interpreted by Vorwerk.




CLASSIC | Design.
Stylish at home and timeless.
Interpreted by Vorwerk.

ART | Design.
Award-winning, limited and simply unique.
Interpreted by Vorwerk.

IT'S A SUPERIOR 1041! WHEN IT CREATES A COSY FEELING EVEN WHERE THIS WOULDN'T BE POSSIBLE.

1. With its fringe look and lively, mottled aesthetics, this carpet is a true eye-catcher and sets comfortable accents in any building space.
2. It impresses with genuine durability, classification 32, good use characteristics and an absolutely outstanding acoustic rating.
3. The labels CE and GUT as well as Bestnote A+ for low room emissions (VOC) go without saying.

IT'S A VORWERK! WHEN THE ALL-INCLUSIVE DELIVERY PROMISE IS KEPT.

-  **1 Our 1st delivery promise:**
We at Vorwerk flooring promise that we will ship out all **in-stock items** of up to **50 square metres** within **three days**, and up to **600 square metres** within **three weeks** (tuft) or **four weeks** (woven and tiles) after receipt of the order.
-  **2 Our 2nd delivery promise:**
We at Vorwerk flooring promise that we will ship out orders of up to **300 square metres** within **three days** after receipt of the order.
-  **3 Our 3rd delivery promise:**
We at Vorwerk flooring promise that we will provide a delivery date and **minimum quantity** after **three days** at the latest for **non-stock items, custom quantities** or **special colours, and special construction designs** within **eight days**.

Take us at our word.



NATURE | Design

SUPERIOR 1041

*Inspired by nature.
Interpreted by Vorwerk.*



8J57



7G29



7G28



8J59



5W99



9F74



3P93



CLASSIC | Design

SUPERIOR 1041

*Stylish at home and timeless.
Interpreted by Vorwerk.*



9F75



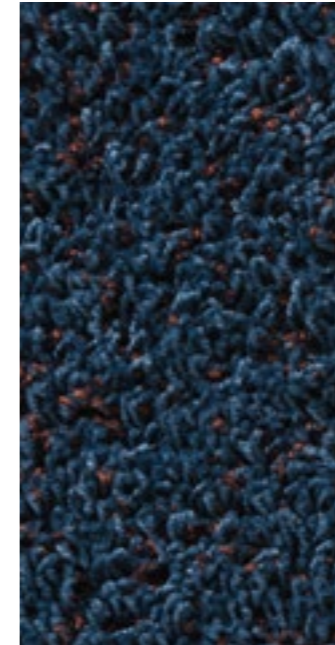
5X00



5W97



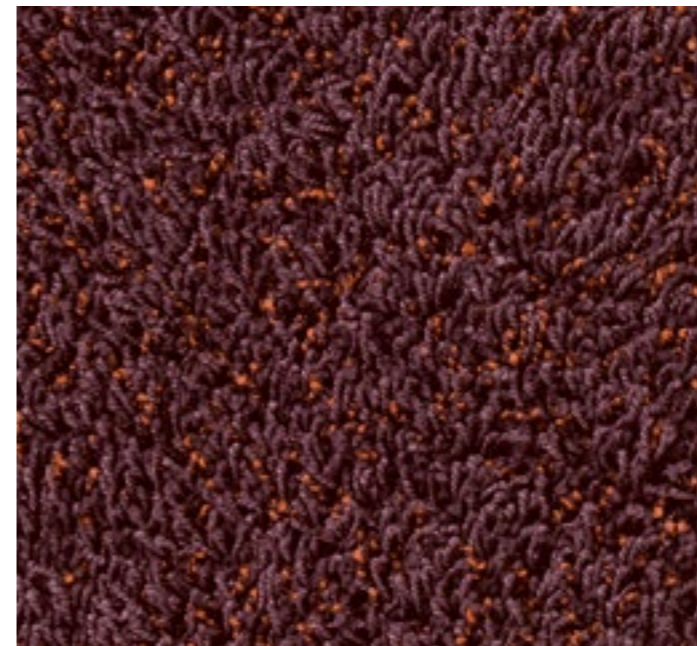
3P95



3P94



5W98



1M92



1M91



SUPERIOR 1041

TECHNICAL INFORMATION



Broadloom

Construction		1/4" Tufted shag, multi-coloured
Pile material		100% PA 6.6
Formats		approx. 400 cm
Durability rating	EN 1307	intensive 32
Number of tufts	EN 1307	approx. 336 dm ²
Total thickness	EN 1307	approx. 11.5 mm
Pile weight	EN 1307	approx. 1500 g/m ²
Total weight	EN 1307	approx. 2520 g/m ²
Fire rating	DIN EN 13501-1	C _{fl} -s1
Impact noise insulation	DIN EN ISO 10140	≥ 20 dB

Additional properties



CE
18

Vorwerk & Co. Teppichwerke
GmbH & Co. KG
Kuhlmannstrasse 11
D - 31785 Hameln

Tuftingartikel PA mit Textilrücken
EN 1307

DOP: 1062#2+6/509+508

EN 14041:2004/AC:2006
1658

Textile floor covering to be used within a building

In the course of constant further development and quality improvement, we reserve the right to change technical data without prior notice. Technical data sheets, installation instructions, recommendations for cleaning, care and maintenance and texts for tenders can be found at: www.vorwerk-carpet.com



**Vorwerk & Co. Teppichwerke
GmbH & Co. KG**
Kuhlmannstrasse 11
31785 Hameln
Germany

Telephone:
+49 (0) 5151 1030
Telephone sales + sample service:
+49 (0) 5151 103 734
info@vorwerk-teppich.de
www.vorwerk-carpet.com