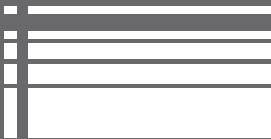
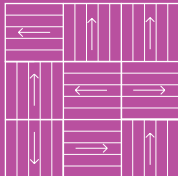


Experience Carpet Tiles



Vapour

10 Colourways



RANDOM LAY DESIGN



AVAILABLE FROM STOCK

Vapour

10 Colourways



Tufted Structured Loop Pile Antron Lumena™ SD 6.6 Nylon	Suitable for offices, retail, schools, colleges and leisure	10 year Warranty	Available in 10 colourways	650 gsm Pile Yarn Weight	BREEAM 'A+' Rated Total recycled content of up to 55%
--	---	---------------------	-------------------------------	-----------------------------	--



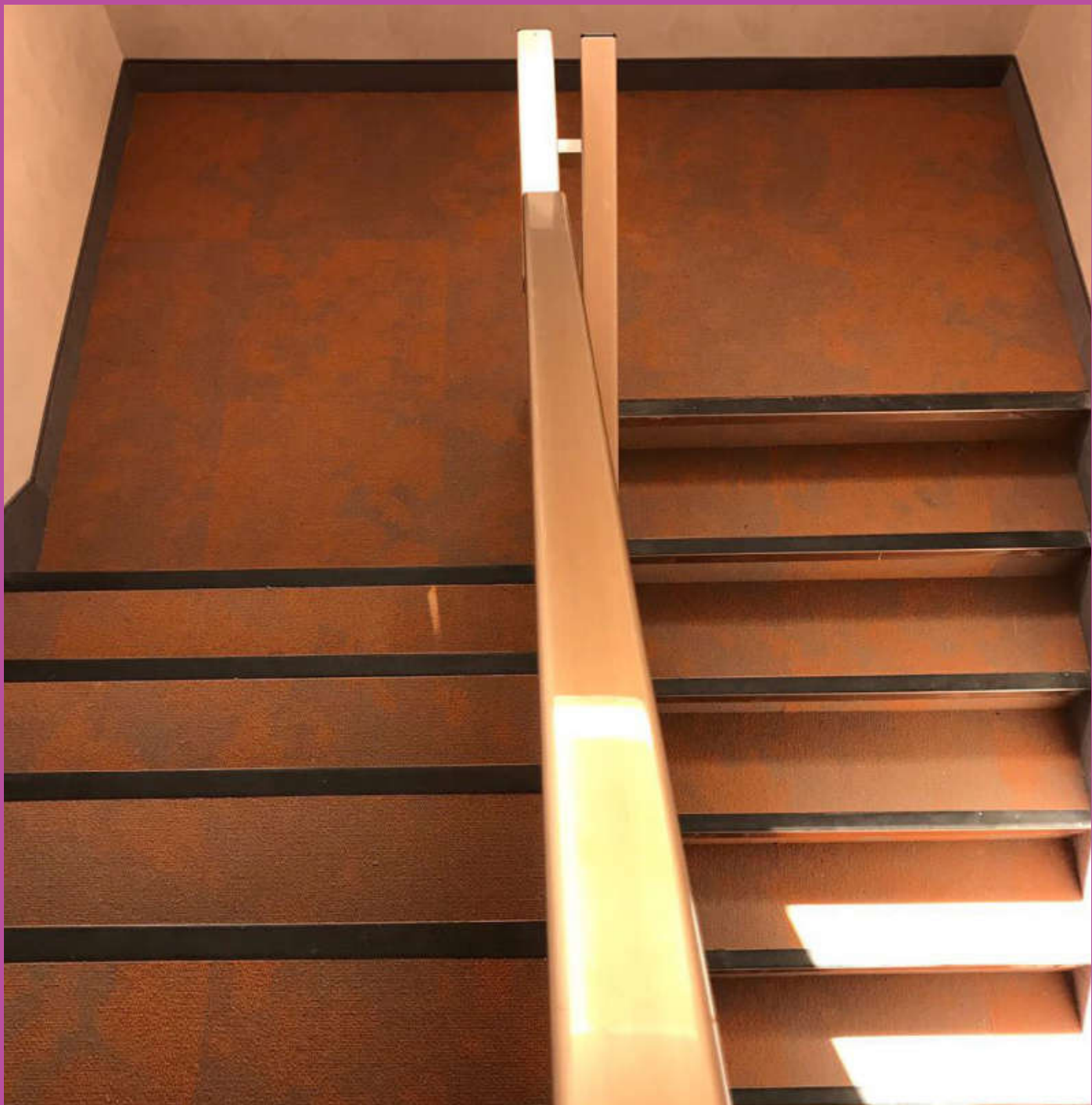
Vapour



Steam

Style	Tufted Structured Loop Pile
	Antron Lumena SD 6.6 Nylon
Yarn Construction	Antron Solution Dyed Nylon 6.6
Pile Yarn Weight	650 gsm
Pile Height	2.5mm +/- 0.5mm
Total Weight	4,140 gsm
Total Thickness	6 mm +/- 0.5mm
Backing	100% Envirobase - minimum of 75% recycled material
Dimensions	50cm x 50cm
Wear Classification	Class 33
Luxury Class	LC1
Anti-static	Less than 2Kv
	Suitable for use with computers
Colour Fastness	Light BS EN ISO105-BO2 Better than 6
	To Water BS EN ISO105-E01 4-5
	To Shampoo BS 1006-UK-TB 4-5
	Rubbing BS EN ISO105-X12 4-5
Flammability	BS 4790 Low Radius of Char
	Euroclass Flammability Cfl-s1 (BS EN 13501)
Castor Chair Test	BS EN 985 Overall r value > 2.4
Warranty 10	Year Warranty
VOC Content	E1 in relation to EN 14041:2004
Environmental Status	Breeam® 'A+' Rated





34465 Nebula
(LRV - Y13.88)



63845 Spray
(LRV - Y6.18)



84558 Steam
(LRV - Y13.19)



82145 Halo
(LRV - Y4.93)



63852 Mist
(LRV - Y6.20)



63243 Aura
(LRV - Y4.06)



74558 Humidity
(LRV - Y6.88)



28382 Fog
(LRV - Y9.32)



54584 Spectre
(LRV - Y9.65)



54516 Cloud
(LRV - Y11.00)



INSTALLATION

Sub floors should be clean, dry and flat and prepared in accordance with BS5325. Timber floors should be covered with plywood or other appropriate sheet materials. For tiles use F Ball tackifier F41 or Laybond. Tiles may be laid tessellated or broadloom. Tiles should be allowed to condition for a minimum of 24 hours at the expected temperature and humidity prevailing when the building is in use. Further installation information is available from the Paragon Sales Office.

COLOUR

For technical reasons, as with all textile materials, it may not be possible to colour match from different batches. Orders requiring colour match should be placed at the same time. Production may therefore show variations to the sample card.

MAINTENANCE

It is recommended that a maintenance schedule be initiated from the date of installation to achieve maximum life expectancy of the product. Regular vacuum cleaning with a rotary brush vacuum cleaner is essential. All spillages and stains should be attended to immediately. For detailed information, please consult the Paragon cleaning and maintenance guide.

DISCLAIMER

Paragon Carpets reserve the right to change without notification the published technical specification or colour of the product.

Antron® fibre is a high-performance ingredient that helps carpet look better longer.

Not all carpet fibers are created equally. Do they have the same texture retention? Do they handle spills the same way? Or clean up easy? The answer is: No, fibre matters. Antron® fiber is a nylon fibre that can help carpet stand up to all the challenges in commercial spaces. By choosing carpets with Antron® fibre you are entering a world of choice of colours, structures and lustres, and they are durable and easy to care for, too.

What’s carpet fibre? It’s the thread that makes up the face of the carpet, and defines how carpet looks and performs over time. People use Antron® fibre to make their carpet live up to its fullest potential—for example, designers who need to match true colours, or users who want to lower maintenance. And because carpets made of Antron® fibre look newer longer, they don’t have to be replaced as often, which is great news for your wallet, your schedule, and your reputation.

Antron® carpet fibre is made of Polyamide Type 6.6:

Type 6,6 nylon polymer has a tighter, more dense molecular structure with on average stronger, shorter hydrogen bonds than type 6 nylon.

Benefits:

- better texture retention or resistance to matting and crushing and greater resilience/ recovery after compression.
- lower permeability and therefore stains will diffuse more slowly into type 6,6 nylon so there is more time to clean up a spill before it becomes a stain.

Benefits of a hollow fibre shape :

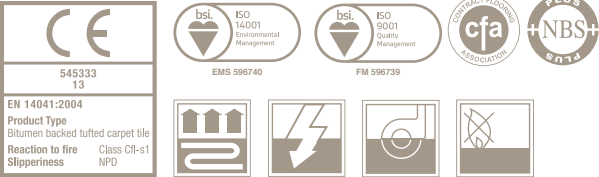
- Antron® Legacy™, Antron® Lumena™ and Antron® Brilliance™ fibres feature hollow filament fibre shapes that help hide soiling. Internal voids refract and diffuse light, enhancing soil hiding capability. Also, the smaller surface area of the hollow filament fibre shapes minimize soil accumulation, making cleaning easier.

Benefits of solution dyed Antron® Lumena™ carpet fibre :

- The solution dyed polyamide Antron® Lumena™ yarn resists fading from light and cleaning, making it an ideal choice for commercial spaces
- Antron® Lumena™ carpet fibre is available in more than 200 colours in 1385dtex, with 45 TruBlend™ and six glimmer options to give maximum creative scope while remaining easy to maintain and hardwearing



Farfield Park
Manvers
Wath-upon-Dearne
Rotherham, S63 5DB
T. +44 (0) 1709 763 839
F. +44 (0) 1709 763 813
E. sales@paragon-carpets.co.uk
W. www.paragon-carpets.co.uk





Aura



Vapour

Fog



Nebula



Spectre



Vapour

Humidity

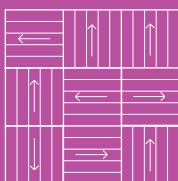
Experience Carpet Tiles



Vapour

10 Colourways

A Division of National Floorcoverings Ltd.
Farfield Park, Manvers, Wath-upon-Deane, Rotherham, S63 5DB T. +44(0) 1709 763839
Samples Department: +44(0) 1709 763805.
Order Free Samples Online E. samples@paragon-carpets.co.uk
www.paragon-carpets.co.uk | www.mat-works.co.uk



RANDOM LAY DESIGN



MADE IN BRITAIN

AVAILABLE
FROM STOCK



i colour wheel www.paragon-app.com



Download our free apps NOW

Search Paragon Carpets

