

# Polysafe™ Stone & Wood

RRL Pendulum Test  
**36+**  
Sustainable Slip Resistance

**P3**

AS 4586

SAFETY FLOORING FOR  
**CONTEMPORARY  
SPACES**



# CREATE SPACES WITHIN SPACES

## CONTEMPORARY DESIGN

Polysafe Stone & Wood fx is a distinctive collection developed to capture the beauty and authenticity of material surfaces with the built-in reassurance of sustainable wet slip resistance. This heavy-duty vinyl sheet safety flooring features 34 commercial floor designs with high clarity stone, concrete and wood effects across a range of warm and cool hues.

The Polysafe Stone & Wood fx collection presents endless possibilities to realise a safe, contemporary interior space. Create unique flooring designs or multi-functional zoning with the complementary stone and wood shades.

## ENGINEERED FOR SAFETY

Virtually invisible aluminium oxide particles are integrated throughout the performance layer to provide a safety flooring which is both functional and beautiful.

These carborundum-free safety particles ensure that Polysafe Stone & Wood fx offers full HSE compliance and sustainable wet slip resistance, achieving **36+** on the pendulum wet tests.



Urban Concrete 6013 & Light Concrete 5087

SAFETY FLOORING  
THAT COMBINES  
BEAUTY WITH  
PERFORMANCE



# Spaces to WORK

## FRONT OF HOUSE SAFETY ASSURANCE

Contrasting stone and wood effect flooring beautifully demonstrates how design and function go hand in hand. The perfect solution for busy retail interiors where the flooring aesthetic and safety performance are a priority.

Protect customers and employees in environments with heavy footfall such as entrances and walkways by specifying a safety floor that can handle potential slip risks from trafficked contaminants and daily spillages.

STUNNING  
SCHEMES  
WITH SAFETY  
ASSURED

Jurassic Stone 6011 & Roasted Limed Ash 3375





# Spaces to LIVE

## CALM AND WELCOMING TONES

The variety of contemporary stone designs and warm wood effects can be used individually for a homely interior or in combination to create harmonious zones in larger spaces.

Attractive designs combined with safety flooring properties that can withstand daily spillages and contaminants make this Polysafe Stone & Wood fx collection perfect for any shared living, housing or commercial setting.

## FUNCTIONAL ZONES FOR SAFE OPEN PLAN LIVING

Dove Slate 6012 & Oiled Oak 3374



# Spaces to HEAL

## HYGIENIC AND LOW MAINTENANCE

Soothing shades of warm concrete and wood give hospital interiors a fresh and non-clinical feel to foster comfortable environments that both patients and staff find uplifting and positive.

Maintaining the look of a floor covering is vital, particularly in highly visible areas which need to be kept hygienic and safe. The tried and trusted Polysafe PUR reinforcement assures both ease of maintenance and optimum appearance levels for design led front of house areas.

WELCOMING  
& HYGIENIC  
WITH BUILT-IN  
SLIP RESISTANCE

Dark Concrete 5089 & American Oak 3387







# Spaces to ENJOY

## IDEAL FOR LARGE SCALE AREAS

For those seeking contemporary, design-led interiors, the stunning urban and light concrete reproductions allow complete design freedom, meeting all safety and maintenance requirements for large scale customer facing spaces.

Ideally suited to retail and leisure interiors with heavy commercial footfall, Polysafe Stone & Wood fx can be laid throughout a facility, including areas that have exterior access or pose a risk of spillage.

## AMBIENT BACKDROPS FOR DINNER & DRINKS





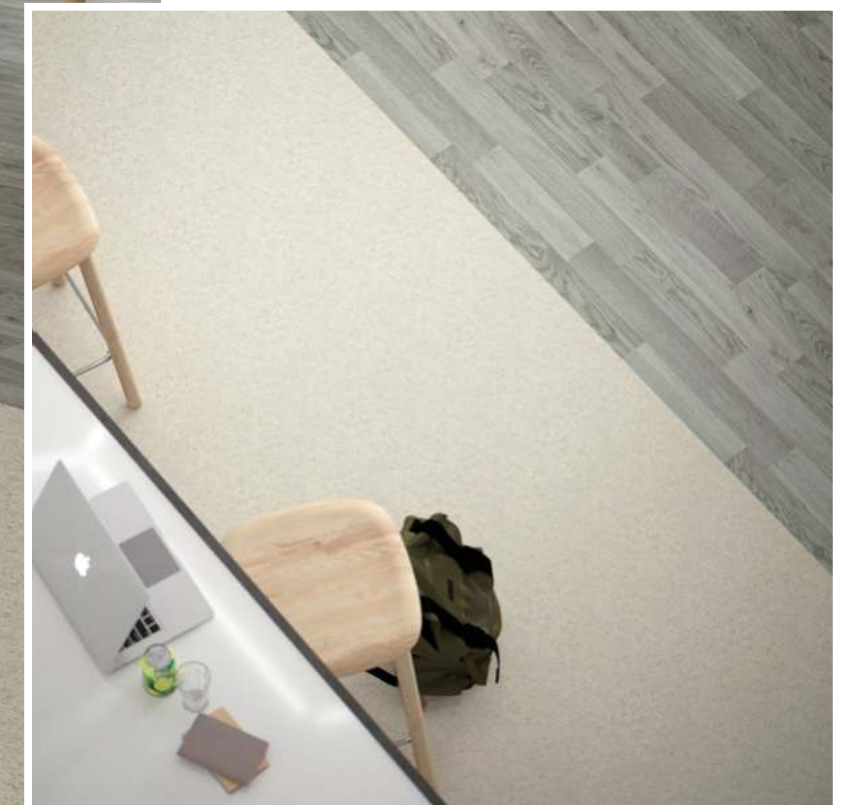
# Spaces to LEARN

## POTENTIAL SPILLAGES

Polysafe Stone & Wood fx has the assurance of sustainable wet slip resistance throughout its guaranteed life and is suitable for large scale educational interiors, particularly in busy food serving areas where there is a risk of spillages.

Create pleasant, comfortable and practical environments with a choice of calming tonal greys across the stone and wood floor designs to guide users with wayfinding or functional zoning.

MULTI-FUNCTIONAL  
SOLUTIONS TO  
STUDY, EAT OR  
SIMPLY MEET







Oiled Oak **3374**  
plank w/l: 166 x 1500mm

w/r 3374  
LRV 37



Sun Bleached Oak **3372**  
plank w/l: 200 x 1500mm

w/r 3372  
LRV 31



Silver Oak **3357**  
plank w/l: 83 x 333/666mm

w/r 3237  
LRV 23



Roasted Lined Ash **3375**  
plank w/l: 166 x 1500mm

w/r 9831  
LRV 30



Tropical Pine **3376**  
plank w/l: 166 x 1500mm

w/r 9822  
LRV 22



American Oak **3387**  
plank w/l: 100 x 1000mm

w/r 3380  
LRV 37



Warm Beech **3297**  
plank w/l: 100 x 500mm

w/r 3290  
LRV 35



Rustic Oak **3337**  
plank w/l: 83 x 333/666mm

w/r 3330  
LRV 26



Classic Oak **3107**  
plank w/l: 166 x 1500mm

w/r 3330  
LRV 29



European Oak **3347**  
plank w/l: 100 x 1000mm

w/r 3340  
LRV 23



Aged Oak **3373**  
plank w/l: 200 x 1500mm

w/r 9824  
LRV 9

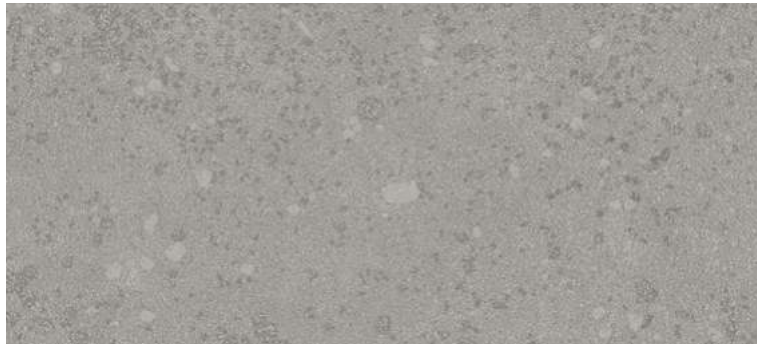


Nero Oak **3371**  
plank w/l: 125 x 1000mm

w/r 9842  
LRV 7

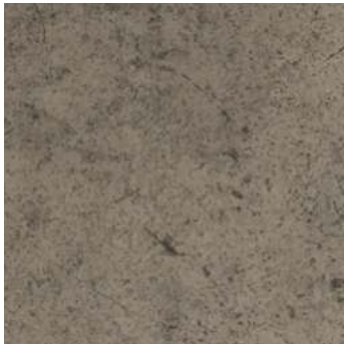
Complementary  
and Contrasting  
**STONE & WOOD**





Dove Slate **6012**  
NCS S 3502-G

w/r 6012  
LRV 35



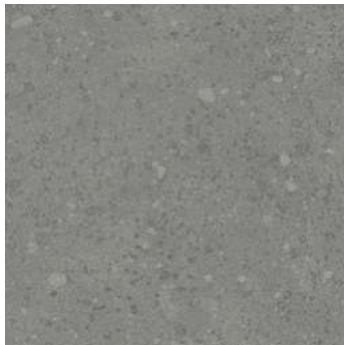
Urban Concrete **6013**  
NCS S 5502-Y

w/r 6013  
LRV 24



Jurassic Stone **6011**  
NCS S 4500-N

w/r 6011  
LRV 22



Natural Slate **6014**  
NCS S 4502-G

w/r 6014  
LRV 22



Dark Concrete **5089**  
NCS S 5502-Y

w/r 5089  
LRV 23



Flagstone Grey **5091**  
NCS S 4005-Y50R

w/r 5091  
LRV 35



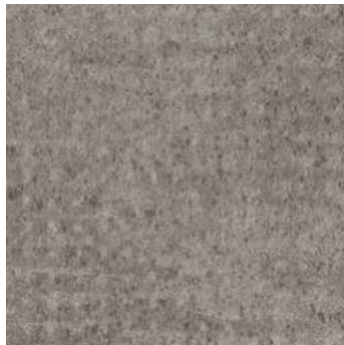
Clay Stone **5092**  
NCS S 5005-Y80R

w/r 5092  
LRV 25



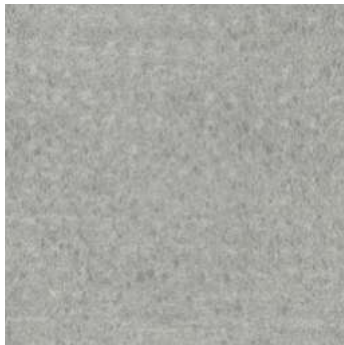
Light Concrete **5087**  
NCS S 4005-G80Y

w/r 5087  
LRV 33



Deep Fossil **5082**  
NCS S 5502-Y

w/r 5082  
LRV 22



Pebble Grey **5083**  
NCS S 4000-N

w/r 5083  
LRV 34



Muted Stone **5081**  
NCS S 2005-Y50R

w/r 5081  
LRV 46



Grey Flourite **4042**  
NCS S 2002-Y50R

w/r 9803  
LRV 48



Agate Grey **4043**  
NCS S 3500-N

w/r 9804  
LRV 38



Galena **4047**  
NCS S 4502-R

w/r 9807  
LRV 27



Gypsum **4044**  
NCS S 2005-Y30R

w/r 9800  
LRV 50



Copal **4046**  
NCS S 3010-Y20R

w/r 9801  
LRV 39



Andesite **4049**  
NCS S 4005-Y50R

w/r 9802  
LRV 26



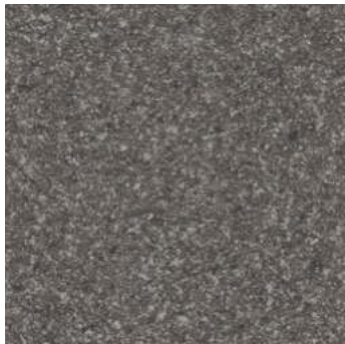
Angelite **4051**  
NCS S 3010-R90B

w/r 9806  
LRV 40



Blue Quartz **4054**  
NCS S 6010-R90B

w/r 9808  
LRV 17



Jetstone **4045**  
NCS S 6500-N

w/r 9805  
LRV 15



Pearl River **5084**  
NCS S 1000-N

w/r 5084  
LRV 63



Valley Rock **5086**  
NCS S 7005-Y20R

w/r 5086  
LRV 14



PRODUCT TESTING

In areas where there is a higher potential for slips and trips, it is important to choose a HSE compliant flooring solution that offers sustainable slip resistance for the product’s lifetime.

✓

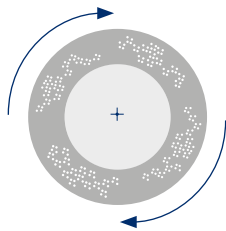
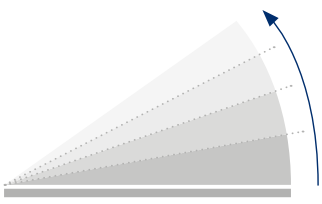
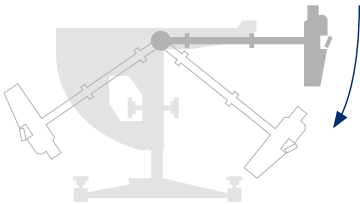
PENDULUM TEST

✓

RAMP TEST

✓

50,000 CYCLES TEST



RRL Pendulum Test  
Sustainable Slip Resistance

36+

P3

AS 4586

DIN 51130 & AS 4586

R10

EN 13845

The European safety flooring standard

Conformance to the 50,000 cycles abrasion test demonstrates that the performance particles within a safety floor are durable, offering longevity and sustainable performance for the guaranteed life of the product.

PUR

TECHNOLOGY

✓

Easy clean

✓

Maintain cost savings

✓

Optimum appearance retention

✓

Resistance to staining & chemicals



TECHNICAL SPECIFICATION

	Gauge	EN 428/ISO 24346	2.0mm
	Wear Layer	EN 429/ISO 24340	0.70mm
	Roll Size	EN 426/ISO 24341	2m x 20m = 40m <sup>2</sup>
	Total Weight	EN 430/ISO 23997	2780g/m <sup>2</sup>
	General Performance	EN 13845 ASTM F1303	Conforms Conforms
	Use Area	EN 685/ISO 10874	
	Resistance to Chemicals	EN 423/ISO 26987	Good chemical resistance
	Reaction to Fire	EN 13501-1 ASTM E648	Class Bfl-S1 Class 1
	Abrasion Resistance	EN 13845 EN 649	50,000 cycles Group T
	Enhanced Slip Resistance	The wet slip resistance across all Polysafe products is sustainable throughout the guaranteed life of the product, with strict adherence to HSE Guidelines. For further clarification regarding slip resistance, consult Polyflor.	
		EN 13845 AS 4586 DIN 51130 RRL Pendulum Test Surface Roughness	ESf R10 R10 ≥36 (wet test - 4S Rubber/Slider 96) Rz ≥20µm
	Electrical Behaviour (body voltage)	EN 1815	≤2kV Classified as ‘antistatic’
	VOC Emissions	AgBB VOC test Floorscore Finnish M1 Classification	Very low emissions Certified Certified
Agrément Assurance – Polysafe Stone & Wood fx PUR has been independently assessed by the British Board of Agrément and product performance is assured for at least 10 years in recommended use areas. With proper maintenance, the appearance, colour and slip resistance will be retained during this period.			
Environmentally Preferable Flooring - Generic EN 15804 Environmental Product Declaration (EPD) available on request. It is 100% recyclable and contains recycled material. Recyclable via the Recofloor scheme. Visit <a href="http://www.polyflor.com/sustainability">www.polyflor.com/sustainability</a> .			
Polysafe PUR - Polysafe Stone & Wood fx PUR features a high quality, cross-linked polyurethane reinforcement, UV cured to provide superior cleaning benefits, life cycle maintenance savings and optimum appearance retention. As with all Polysafe products, Polysafe Stone & Wood fx PUR should not have a polish applied.			
Hygiene - All Polyflor commercial sheet vinyl ranges provide a continuous, impervious and hygienic flooring solution which can be confidently cleaned in accordance with recommended maintenance procedures and approved maintenance products. The implementation of an effective cleaning regime is the most important defence against infection.			
	Polysafe safety flooring ranges have good resistance to dilute acids and alkalis, are compatible for use with the most commonly used alco-based hand gels and are suitable for steam cleaning on a periodic basis. Chemical resistance charts available on request. For information regarding handling and installation, adhesives, maintenance, applications, chemical resistance and product warranty, consult Polyflor Customer Technical Services on +44 (0)161 767 1912, or email <a href="mailto:tech@polyflor.com">tech@polyflor.com</a> .		
	As with all Polysafe products, Polysafe Stone & Wood fx PUR should not have a polish applied. For best results, flooring must be reversed laid. The data presented is correct at the time of printing. For latest information, please visit our website <a href="http://polyflor.com">polyflor.com</a> .		
	Decoration and shade may vary slightly from the samples shown.		

100% RECYCLABLE  
CONTAINS RECYCLED MATERIAL

For more information regarding our recommended safety flooring finishes or product testing please contact Customer Technical Services Department on +44 (0)161 767 1912 or email [tech@polyflor.com](mailto:tech@polyflor.com)  
Alternatively please visit [polyflor.com/safety](http://polyflor.com/safety)

FREE  
SAMPLES

+44 (0)161 767 2551  
[polyflor.com](http://polyflor.com)



# Polysafe™

## POLYFLOR™ INTERNATIONAL

### Australia

Polyflor Australia  
Tel: 1800 777 425  
E-mail: sales@polyflor.com.au

### Canada

Polyflor Canada Inc.  
Tel: +1 905 364 3000  
E-mail: sales@polyflor.ca

### China

Polyflor Hong Kong  
Tel: +(852) 2865 0101  
E-mail: info@polyflor.com.hk

### France

James Halstead France SAS  
Tel: +33 (0) 8 20 20 32 11  
E-mail: info@jhfrance.fr

### Germany

objectflor Art und Design Belags GmbH  
Tel: +49 (0) 2236 966 330  
E-mail: info@objectflor.de

### India

Polyflor India Pvt Ltd  
Tel: +91 22 4023 2485  
E-mail: info@polyflor.co.in

### Ireland

Polyflor Ireland  
Tel: +353 (1) 864 9304  
E-mail: salesireland@polyflor.com

### Middle East

Polyflor FZE  
Tel: +971 50 406 8114  
E-mail: aelwakil@polyflorfze.ae

### New Zealand

Polyflor New Zealand Ltd  
Tel: 0800 765 935  
E-mail: sales@polyflor.co.nz

### Norway

Polyflor Nordic  
Tel: +47 23 00 84 00  
E-mail: firmapost@polyflor.no

### Poland

Polflor Sp. Z o.o.  
Tel: +48 (0) 61 820 3155  
E-mail: polyflor@polflor.com.pl

### South Africa

Poly Sales Africa (Pty.) Ltd  
Tel: +27 (0) 11 609 3500  
E-mail: info@polyflor.co.za

### Sweden

FalckDesign AB  
Tel: +46 (0) 300 15820  
E-mail: info@falckdesign.com

## POLYFLOR™ UK

Polyflor Ltd. PO Box 3, Radcliffe New Road,  
Whitefield, Manchester, M45 7NR

UK Sales Direct: +44 (0) 161 767 1122  
UK Samples Direct: +44 (0) 161 767 2551  
Export Sales Direct: +44 (0) 161 767 1913  
Technical Support: +44 (0) 161 767 1912  
E-mail: info@polyflor.com

[polyflor.com/safety](http://polyflor.com/safety)