

mat.works

Entrance Solutions

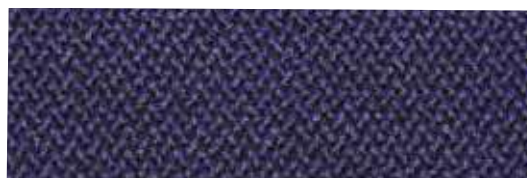
part of the group

paragon
CARPET TILES

Mat.Works is a Division of National Floorcoverings Ltd,
the UK's leading manufacturer of commercial floor coverings.



High specification, secondary entrance matting



Dark Blue



Charcoal



Mercury

PREMIER

Description:

High specification secondary entrance matting.

Made from 80% wool from renewable sources only.

Absorbs up to 4 times more moisture than man made fibres.

All products conform to BS8300.

Low LRV Values compared to aluminium, LVL and fibrebonded products. This ensures a positive point difference is easy to achieve for areas where partially sighted traffic will be important to consider.

Equalities Act 2010 compliant.

Entrance matting resistant to point loading and scuffing from rubber wheels and walking aids.

Flame properties:

Bfl-s1 (Tile only). (BS EN ISO 11925.2). (BS EN ISO 9239.1).

Colours:

Colour options available 3

Technical data:

Style	Tufted twist pile
Fibre construction	80% Wool / 20% Nylon + monofilament scraper
Tuft gauge	1/8"
Pile yarn weight	1500 gsm
Pile height	6 mm
Pile density	117,800 tufts per m2
Total weight	Tile 5300 gsm / Sheet 2300 gsm
Total thickness	Tile 12 mm / Sheet 10 mm
Backing	Unitary Bac Tile Backing Bitumen
Roll size	25.00 m x 2.00 m
Tile size	50 cm x 50 cm (Tile)
Wear classification	Heavy contract
Electro-static	Less than 2Kv
Colour fastness (BS1006)	
Light	(BS1006:B02) 5
Wet rubbing	(BS1006:B01) 4 - 5
Dry rubbing	(BS1006:X12) 4 - 5
Wet shampoo	(BS1006:UK-TB) 4 - 5

mat.works

Entrance Solutions

part of the group

paragon
CARPET TILES



- Commercial Entrance Matting
- Health & Safety Specialists
- ISO 14001 Accredited
- ISO 9001:2000 Accredited
- Disability Act Specialist

Farfield Park, Manvers, Wath-upon-Dearne, Rotherham, S63 5DB

T: +44 (0) 1709 763 839
F: +44 (0) 1709 763 813
E: sales@mat-works.co.uk
W: www.mat-works.co.uk

Marketing/Samples Department:
T: +44 (0) 1709 763 805
F: +44 (0) 1709 763 813
E: samples@mat-works.co.uk