



Discover more
with Paragon
More products,
more passion,
more possibilities



___Paragon Carpet Tiles is part of National Floorcoverings Group, which is committed to sustainable UK manufacturing and producing quality products for its customers.

The Group has expertise in all areas of flooring, from manufacturing entrance matting, fibre bonded carpets, carpet tiles, and tufted tiles, to specialised sports surfaces.

Contents

Elemental	4	Cut Pile	54
Heathstar	6	Maestro	56
Hornbeam	8	Workspace Cut Pile	58
Cloudburst	10	Luxury Commercial Vinyl	60
Millstone	12	Rappórt	62
Design Loop	14	Duera	64
Inspiration - Cresta	16	Entrance Matting	66
Inspiration - Mesh	18	Primary	
Inspiration - Greda	20	Frameworks	68
Inspiration - Phase	22	Treadloc 25	70
Vapour	24	Entrack 50	74
Total Contrast	26	Treadsure 205	76
Strobe	28	Secondary	
Workspace Linear	30	Workspace Entrance	78
Codec	32	Frontier Fusion	80
Loop Pile	34	CrossFort	82
Workspace Loop	36	Information	84
Diversity	38	The Environment	84
Diversity Groove	40	Sustainable Manufacturing	86
Vital	42	Cleaning & Maintenance Guide	88
Toccarre	44	Case Studies	90
Sirocco	46		
Sirocco Stripe	48		
Macaw	50		
Macaw Stripe	52		



Bring nature into your interior spaces with the inspirational Elemental collection

Elemental

Inspired by nature, designed to perform.

Channelling the natural beauty that surrounds us in our Yorkshire home, our designers have created a stunning premium tile range that matches artistic elegance with the qualities of high-performance flooring.

Heathstar	6	Cloudburst	10
Hornbeam	8	Millstone	12

Elemental Heathstar



Wildflower Blue 612152

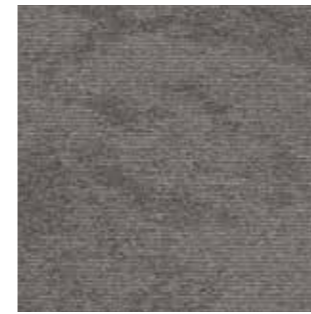


Heathland Night 604202

ECONYL®



Twilight Ember 908002



Dappled Grey 810112
LRV - 15.86



Wildflower Blue 612152
LRV - 8.92



Dune Moonlight 603132
LRV - 7.99



Heathland Night 604202
LRV - 7.72



Peat Shadow 906102
LRV - 5.18



Rustic Moss 501242
LRV - 13.16



Shingle Stone 107222
LRV - 16.46



Tankmoss Mist 805122
LRV - 17.84



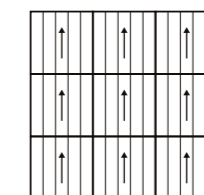
Twilight Ember 908002
LRV - 4.09

Specification

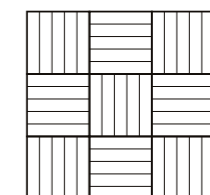
Stylett	Tufted 1/10" Gauge Loop Pile Tile
Yarn Construction	100% Econyl® Solution Dyed Nylon
Yarn Recycled Content	100%
Total Recycled Content	79%
Pile Yarn Weight	730g/m ²
Pile Height	4mm
Total Weight	4220g/m ²
Total Thickness	7mm
Backing	100% Envirobase – minimum of 75% recycled material
Tile Size	50cm x 50cm
Tiles Per Box	20 (5m ²)
Wear Classification	Heavy Contract Class 33
Luxury Class	LC2
Anti-Static	Suitable for use with computers. Less than 2Kv
Colour Fastness	Light >6 Shampoo 4-5 Dry Rubbing 4-5 Wet Rubbing 4-5
Flammability	BS5287 Assessment and labelling of Textile Floorcovering tested to BS4790 (Hot Metal Nut Test) – Low Radius of Char
BS EN 13501	Class Bfl-s1
Impact Noise Reduction	Minimum 26dB
Castor Chair Test	Suitable for intensive use with castor chairs
Warranty	10 years
VOC Content	E1 in relation to EN 14041:2004
Environmental Status	BREEAM® A Rated



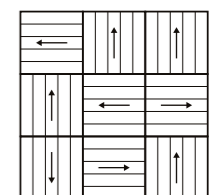
Laying Patterns



Broadloom



Tessellated



Random Lay

Elemental Hornbeam



Coppice Dawn 604203

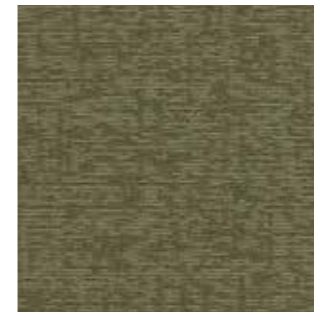


Glade Dusk 906103

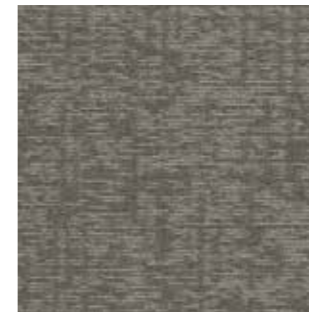
ECONYL®



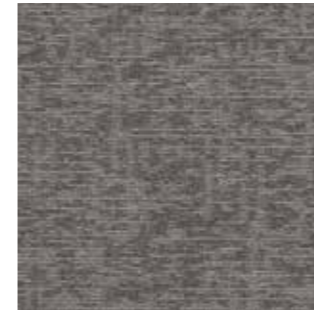
Woodland Whisper 107223



Broadleaf Oak 501243
LRV - 14.71



Cedar Mist 805123
LRV - 16.76



Covert Shade 810113
LRV - 16.66



Forest Shadow 908003
LRV - 3.65



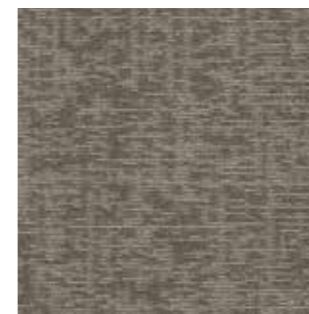
Glade Dusk 906103
LRV - 5.30



Holt Beck 612153
LRV - 9.32



Timber Ash 603133
LRV - 8.67



Woodland Whisper 107223
LRV - 16.39



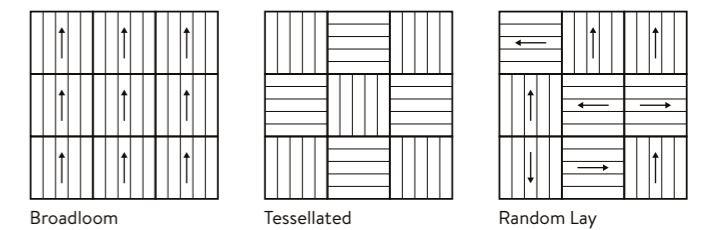
Coppice Dawn 604203
LRV - 7.45

Specification

Style	Tufted 1/10" Gauge Loop Pile Tile
Yarn Construction	100% Econyl® Solution Dyed Nylon
Yarn Recycled Content	100%
Total Recycled Content	78%
Pile Yarn Weight	660g/m ²
Pile Height	4mm
Total Weight	4150g/m ²
Total Thickness	7mm
Backing	100% Envirobase – minimum of 75% recycled material
Tile Size	50cm x 50cm
Tiles Per Box	20 (5m ²)
Wear Classification	Heavy Contract Class 33
Luxury Class	LC2
Anti-Static	Suitable for use with computers. Less than 2Kv
Colour Fastness	Light >6 Shampoo 4-5 Dry Rubbing 4-5 Wet Rubbing 4-5
Flammability	BS5287 Assessment and labelling of Textile Floorcovering tested to BS4790 (Hot Metal Nut Test) – Low Radius of Char
BS EN 13501	Class Bfl-s1
Impact Noise Reduction	Minimum 26dB
Castor Chair Test	Suitable for intensive use with castor chairs
Warranty	10 years
VOC Content	E1 in relation to EN 14041:2004
Environmental Status	BREEAM® A Rated



Laying Patterns



Elemental Cloudburst



Stratus Mist 805124

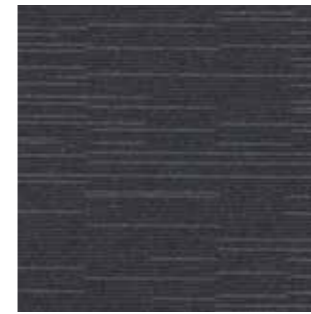


Downpour Dusk 906104
Deluge Dawn 604204

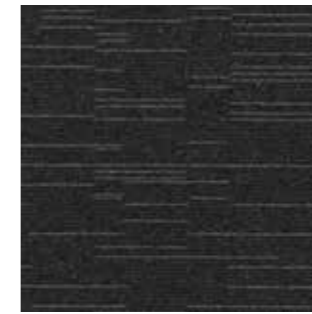
ECONYL®



Nimbus Grey 810114



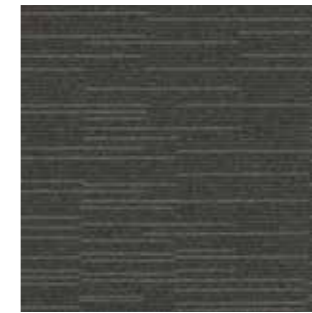
Deluge Dawn 604204
LRV - 5.57



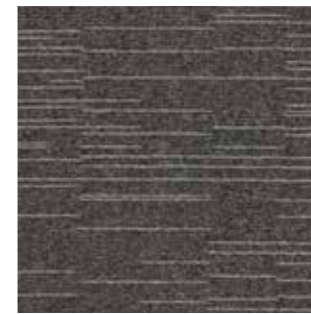
Downpour Dusk 906104
LRV - 3.20



Nimbus Grey 810114
LRV - 10.44



Monsoon Moonlight 603134
LRV - 5.44



Silver Lining 809174
LRV - 11.39



Starfield Shower 102194
LRV - 9.84



Storm Shadow 908004
LRV - 3.09



Stratus Mist 805124
LRV - 11.69



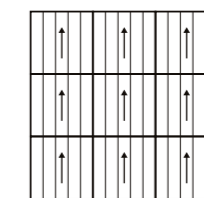
Torrent Green 501244
LRV - 10.80

Specification

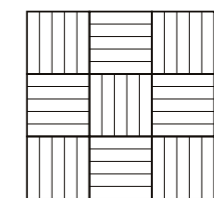
Style	Tufted 1/10" Gauge Loop Pile Tile
Yarn Construction	100% Econyl® Solution Dyed Nylon
Yarn Recycled Content	100%
Total Recycled Content	78%
Pile Yarn Weight	680g/m ²
Pile Height	4mm
Total Weight	4170g/m ²
Total Thickness	7mm
Backing	100% Envirobase – minimum of 75% recycled material
Tile Size	50cm x 50cm
Tiles Per Box	20 (5m ²)
Wear Classification	Heavy Contract Class 33
Luxury Class	LC2
Anti-Static	Suitable for use with computers. Less than 2Kv
Colour Fastness	Light >6 Shampoo 4-5 Dry Rubbing 4-5 Wet Rubbing 4-5
Flammability	BS5287 Assessment and labelling of Textile Floorcovering tested to BS4790 (Hot Metal Nut Test) – Low Radius of Char
BS EN 13501	Class Bfl-s1
Impact Noise Reduction	Minimum 26dB
Castor Chair Test	Suitable for intensive use with castor chairs
Warranty	10 years
VOC Content	E1 in relation to EN 14041:2004
Environmental Status	BREEAM® A Rated



Laying Patterns



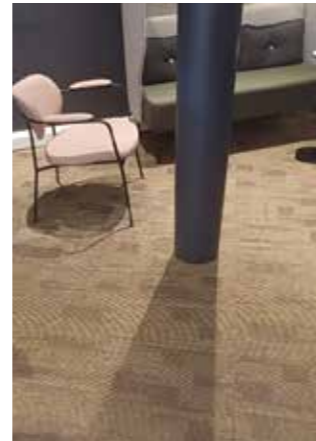
Broadloom



Tessellated

To see the true colour representation of the product, please refer to the shade card or request a sample, since monitors and lighting can affect the overall appearance of the colour/ tile.

Elemental Millstone



Pennine Stone 102191



Baslow Mist 805121

ECONYL®



Heathersage Dawn 604201



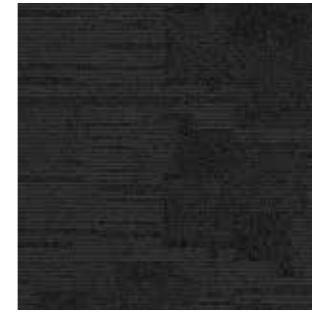
Baslow Mist 805121
LRV - 16.95



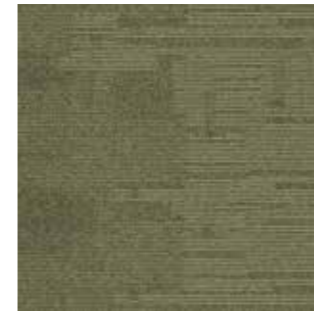
Bedstone Grist 107221
LRV - 18.27



Burbage Moonlight 603131
LRV - 8.49



Dark Peak 908001
LRV - 3.92



Gritstone Moss 501241
LRV - 13.31



Heathersage Dawn 604201
LRV - 7.78



Oswald Grey 810111
LRV - 15.56



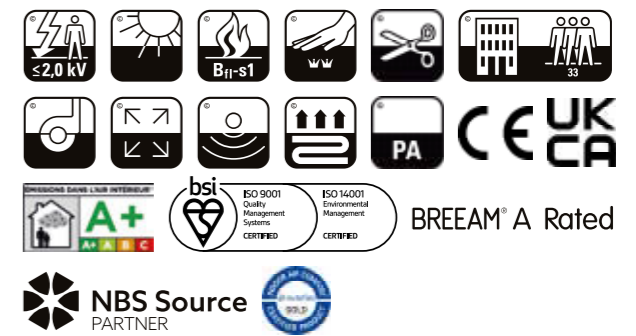
Pennine Stone 102191
LRV - 12.77



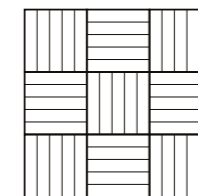
Stange Dusk 906101
LRV - 5.59

Specification

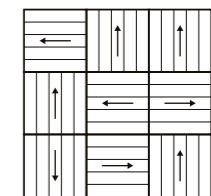
Style	Tufted 1/10" Gauge Loop Pile Tile
Yarn Construction	100% Econyl® Solution Dyed Nylon
Yarn Recycled Content	100%
Total Recycled Content	78%
Pile Yarn Weight	650g/m ²
Pile Height	4mm
Total Weight	4140g/m ²
Total Thickness	7mm
Backing	100% Envirobase – minimum of 75% recycled material
Tile Size	50cm x 50cm
Tiles Per Box	20 (5m ²)
Wear Classification	Heavy Contract Class 33
Luxury Class	LC2
Anti-Static	Suitable for use with computers. Less than 2Kv
Colour Fastness	Light >6 Shampoo 4-5 Dry Rubbing 4-5 Wet Rubbing 4-5
Flammability	BS5287 Assessment and labelling of Textile Floorcovering tested to BS4790 (Hot Metal Nut Test) – Low Radius of Char
BS EN 13501	Class Bfl-s1
Impact Noise Reduction	Minimum 26dB
Castor Chair Test	Suitable for intensive use with castor chairs
Warranty	10 years
VOC Content	E1 in relation to EN 14041:2004
Environmental Status	BREEAM® A Rated



Laying Patterns



Tessellated



Random Lay



The Design Loop
Collection.
Make a statement.

Design Loop

Paragon Carpet Tiles' design loop carpet tile ranges are available in a wide range of colours, textures and patterns.

They add creative flair to suit commercial office environments, residential developments and other sectors such as retail, healthcare and education.

Inspiration - Cresta	16	Total Contrast	26
Inspiration - Mesh	18	Strobe	28
Inspiration - Greda	20	Workspace Linear	30
Inspiration - Phase	22	Codec	32
Vapour	24		

Inspiration Cresta



Polar Trek 1790N



Castle Black 9778N



Castle Black 9778N



Castle Black 9778N
LRV - 1.91



Silver Wolf 8779N
LRV - 3.94



Bear Silver 9749N
LRV - 4.15



Polar Trek 1790N
LRV - 18.94

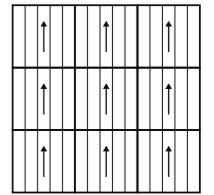


Lucent Grey 1746N
LRV - 7.63

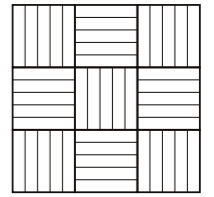


Glam Cyan 6755N
LRV - 3.60

Laying Patterns



Broadloom



Tessellated

Specification

Style	1/12" Tufted Cut/Loop Tile
Yarn Construction	100% Solution Dyed Nylon
Pile Yarn Weight	750g/m ²
Pile Height	3 - 5mm
Total Weight	4450g/m ²
Total Thickness	7mm ± 0.5mm
Backing	100% Envirobase - minimum of 75% recycled material
Additional Backing	Komfort Bac available on request
Tile Size	50cm x 50cm
Tiles Per Box	20 (5m ²)
Wear Classification	Heavy Contract Class 33
Luxury Class	LC1

Anti-Static	Suitable for use with computers. Less than 2Kv
Colour Fastness	Light (BS EN ISO 105:B02) >5 Shampoo (BS 1006:UK-TB:1990) >4 Dry Rubbing (BS EN ISO 105:B01) >4 Wet Rubbing (BS EN ISO 105:X12) >4
Flammability	BS5287 Assessment and labelling of Textile Floorcovering tested to BS4790 (Hot Metal Nut Test) - Low Radius of Char
BS EN 13501	Class Bfl-s1
Impact Noise Reduction	23dB
Castor Chair Test	Suitable for intensive use with castor chairs
Warranty	10 years
VOC Content	E1 in relation to EN 14041:2004



Inspiration Mesh



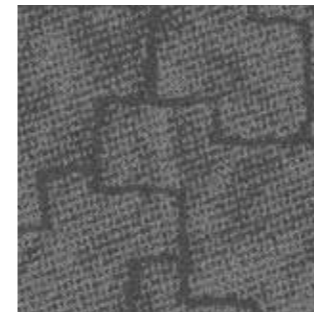
Mild Sienna 8755L



Obsidian Flash 8775L



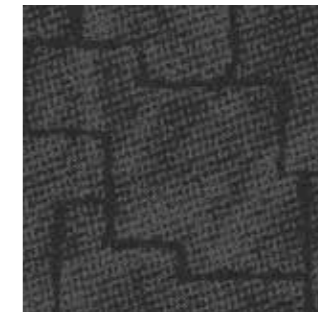
Shadow Bone 8778L



Obsidian Flash 8775L
LRV - 5.10



Sonic Coal 8773L
LRV - 12.69



Shadow Bone 8778L
LRV - 3.11



Mild Sienna 8755L
LRV - 2.04

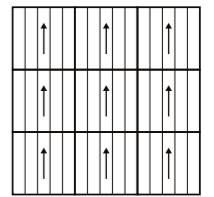


Satin Ash 9748L
LRV - 4.20

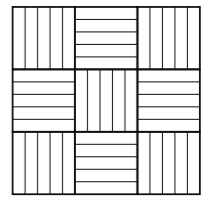


Burly Wood 1745L
LRV - 8.43

Laying Patterns



Broadloom



Tessellated

Specification

Style	1/12" Tufted Cut/Loop Tile
Yarn Construction	100% Solution Dyed Nylon
Pile Yarn Weight	750g/m ²
Pile Height	2.5 - 5.5mm
Total Weight	4450g/m ²
Total Thickness	7mm ± 0.5mm
Backing	100% Envirobase – minimum of 75% recycled material
Additional Backing	Komfort Bac available on request
Tile Size	50cm x 50cm
Tiles Per Box	20 (5m ²)
Wear Classification	Heavy Contract Class 33
Luxury Class	LC1

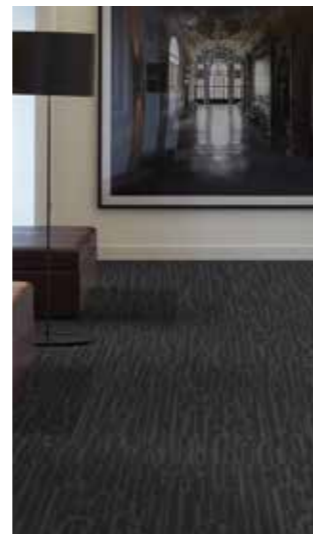
Anti-Static	Suitable for use with computers. Less than 2Kv
Colour Fastness	Light (BS EN ISO 105:B02) >5 Shampoo (BS 1006:UK-TB:1990) >4 Dry Rubbing (BS EN ISO 105:B01) >4 Wet Rubbing (BS EN ISO 105:X12) >4
Flammability	BS5287 Assessment and labelling of Textile Floorcovering tested to BS4790 (Hot Metal Nut Test) – Low Radius of Char
BS EN 13501	Class Bfl-s1
Impact Noise Reduction	23dB
Castor Chair Test	Suitable for intensive use with castor chairs
Warranty	10 years
VOC Content	E1 in relation to EN 14041:2004



Inspiration Greda



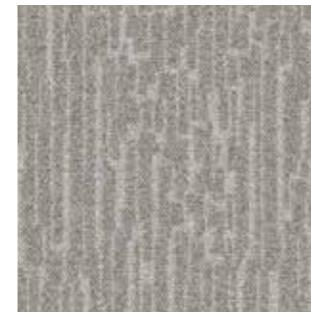
Crackled Station 1763V



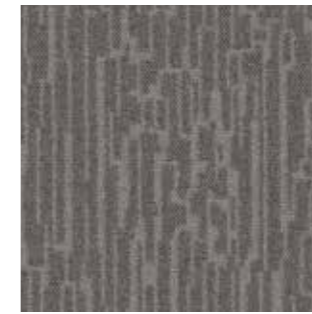
Ghost Machine 8775V



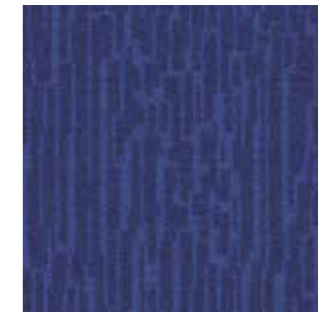
Crackled Station 1763V



Livid Grey 8773V
LRV - 10.40



Ghost Machine 8775V
LRV - 4.19



Electric Azure 6755V
LRV - 3.77



Crackled Station 1763V
LRV - 12.20

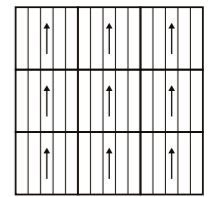


Lime Spring 5761V
LRV - 24.37

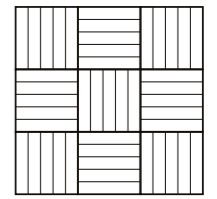


Moccasin 3730V
LRV - 10.37

Laying Patterns



Broadloom



Tessellated

Specification

Style	Tufted 1/12" Gauge Loop Pile Tile
Yarn Construction	100% Solution Dyed Nylon
Pile Yarn Weight	750g/m ²
Pile Height	3 - 6.5mm
Total Weight	4450g/m ²
Total Thickness	8mm ± 0.5mm
Backing	100% Envirobase – minimum of 75% recycled material
Additional Backing	Komfort Bac available on request
Tile Size	50cm x 50cm
Tiles Per Box	20 (5m ²)
Wear Classification	Heavy Contract Class 33
Luxury Class	LC1

Anti-Static	Suitable for use with computers. Less than 2Kv
Colour Fastness	Light (BS EN ISO 105:B02) >5 Shampoo (BS 1006:UK-TB:1990) >4 Dry Rubbing (BS EN ISO 105:B01) >4 Wet Rubbing (BS EN ISO 105:X12) >4
Flammability	BS5287 Assessment and labelling of Textile Floorcovering tested to BS4790 (Hot Metal Nut Test) – Low Radius of Char
BS EN 13501	Class Bfl-s1
Impact Noise Reduction	23dB
Castor Chair Test	Suitable for intensive use with castor chairs
Warranty	10 years
VOC Content	E1 in relation to EN 14041:2004



Inspiration Phase



Cloud Indigo 6658B



Navajo Brown 3627B



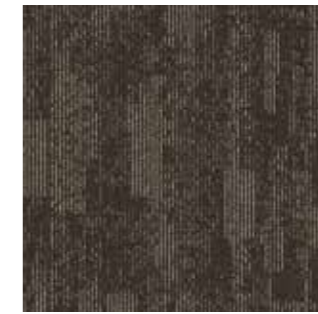
Dodger Blue 6657B



Gainsboro 8675B
LRV - 6.13



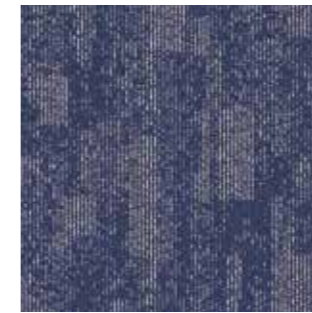
Virtual Ebony 8677B
LRV - 2.87



Charged Metal 1648B
LRV - 2.69



Dodger Blue 6657B
LRV - 2.78

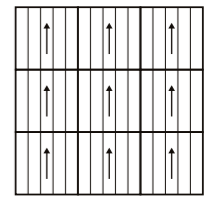


Cloud Indigo 6658B
LRV - 5.07

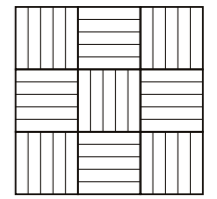


Navajo Brown 3627B
LRV - 3.24

Laying Patterns



Broadloom



Tessellated

Specification

Style	Tufted 1/12" Gauge Loop Pile Tile
Yarn Construction	100% Solution Dyed Nylon
Pile Yarn Weight	610g/m ²
Pile Height	2.5 - 5.5mm
Total Weight	4310g/m ²
Total Thickness	7mm ± 0.5mm
Backing	100% Envirobase – minimum of 75% recycled material
Additional Backing	Komfort Bac available on request
Tile Size	50cm x 50cm
Tiles Per Box	20 (5m ²)
Wear Classification	Heavy Contract Class 33
Luxury Class	LC1

Anti-Static	Suitable for use with computers. Less than 2Kv
Colour Fastness	Light (BS EN ISO 105:B02) >5 Shampoo (BS 1006:UK-TB:1990) >4 Dry Rubbing (BS EN ISO 105:B01) >4 Wet Rubbing (BS EN ISO 105:X12) >4
Flammability	BS5287 Assessment and labelling of Textile Floorcovering tested to BS4790 (Hot Metal Nut Test) – Low Radius of Char
BS EN 13501	Class Bfl-s1
Impact Noise Reduction	23dB
Castor Chair Test	Suitable for intensive use with castor chairs
Warranty	10 years
VOC Content	E1 in relation to EN 14041:2004



Vapour



Alchemy 54568



Distill 84559



Purify 81111



Thermos 82146
LRV - 3.70



Alchemy 54568
LRV - 10.74



Wisp 81434
LRV - 5.94



Distill 84559
LRV - 15.04



Neboa 74559
LRV - 5.94



Nitro 63846
LRV - 4.45



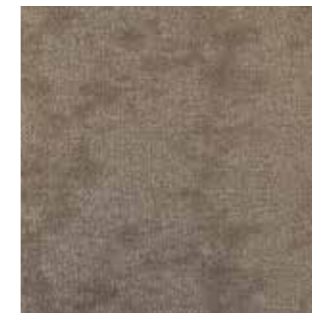
Electron 63888
LRV - 7.55



Haze 63244
LRV - 4.48



Purify 81111
LRV - 7.52



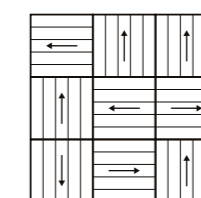
Brume 18382
LRV - 13.13

Specification

Style	Tufted 1/12" Gauge Loop Pile Tile
Yarn Construction	100% Solution Dyed Nylon 6
Pile Yarn Weight	650g/m ²
Pile Height	2.5mm ± 0.5mm
Total Weight	3800g/m ²
Total Thickness	6mm ± 0.5mm
Backing	100% Envirobase - minimum of 75% recycled material
Tile Size	50cm x 50cm
Tiles Per Box	20 (5m ²)
Wear Classification	Heavy Contract Class 33
Luxury Class	LC1
Anti-Static	Suitable for use with computers. Less than 2Kv
Colour Fastness	Light (BS EN ISO 105:B02) >6 Shampoo (BS 1006:UK-TB:1990) 4-5 Dry Rubbing (BS EN ISO 105:B01) 4-5 Wet Rubbing (BS EN ISO 105:X12) 4-5
Flammability	BS5287 Assessment and labelling of Textile Floorcovering tested to BS4790 (Hot Metal Nut Test) - Low Radius of Char
BS EN 13501	Class Bfl-s1
Impact Noise Reduction	25dB
Castor Chair Test	Suitable for intensive use with castor chairs
Warranty	10 years
VOC Content	E1 in relation to EN 14041:2004
Environmental Status	BREEAM® A Rated



Laying Patterns

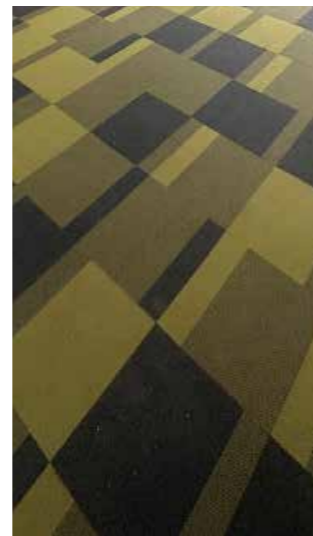


Random Lay

Total Contrast



Palladium Sky 91826



Black Leaf 52926

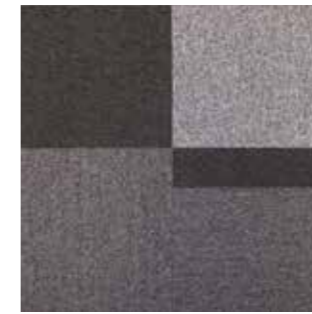
ECONYL®



Palladium Sky 91826



Palladium Sky 91826
LRV - 3.74



Chrome Pelt 83126
LRV - 8.51



Ocean Rocks 64518
LRV - 3.01



Black Leaf 52926
LRV - 11.81



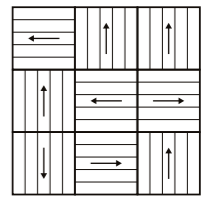
Cracked Sapling 10001
LRV - 14.99



Mellow Bark 10203
LRV - 11.69

Colourways show 1sqm for pattern effect

Laying Patterns



Random Lay

Specification

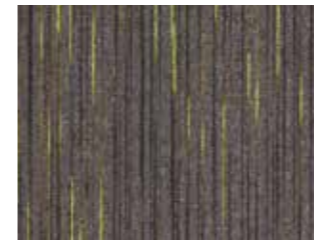
Style	Tufted 1/10" Gauge Loop Pile Tile
Yarn Construction	100% Solution Dyed Econyl® manufactured from recycled fishing nets
Yarn Recycled Content	100%
Total Recycled Content	78%
Pile Yarn Weight	600g/m ²
Pile Height	3mm
Total Weight	4390g/m ²
Total Thickness	6mm
Backing	100% Envirobase – minimum of 75% recycled material
Additional Backing	Komfort Bac available on request
Tile Size	50cm x 50cm
Tiles Per Box	20 (5m ²)
Wear Classification	Heavy Contract Class 33

Luxury Class	LC1
Anti-Static	Suitable for use with computers. Less than 2Kv
Colour Fastness	Light (BS EN ISO 105:B02) >6 Shampoo (BS 1006:UK-TB:1990) 4-5 Dry Rubbing (BS EN ISO 105:B01) 4-5 Wet Rubbing (BS EN ISO 105:X12) 4-5
Flammability	BS5287 Assessment and labelling of Textile Floorcovering tested to BS4790 (Hot Metal Nut Test) – Low Radius of Char
BS EN 13501	Class Bfl-s1
Impact Noise Reduction	26dB
Castor Chair Test	Suitable for intensive use with castor chairs
Warranty	10 years
VOC Content	E1 in relation to EN 14041:2004
Environmental Status	BREEAM® A Rated



To see the true colour representation of the product, please refer to the shade card or request a sample, since monitors and lighting can affect the overall appearance of the colour/ tile.

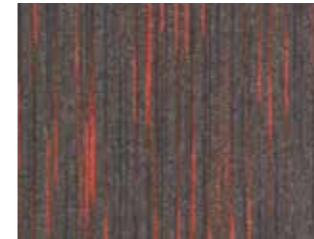
Strobe



Flex 2620
LRV - 4.97



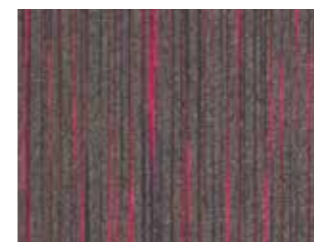
Blaze 2604
LRV - 4.24



Ignite 2603
LRV - 6.09



Extreme 2606
LRV - 5.11



Spark 2621
LRV - 4.57



Vivid 4504
LRV - 4.38



Rapid 2614
LRV - 5.53



Breeze 4109
LRV - 6.04



Force 2605
LRV - 7.47



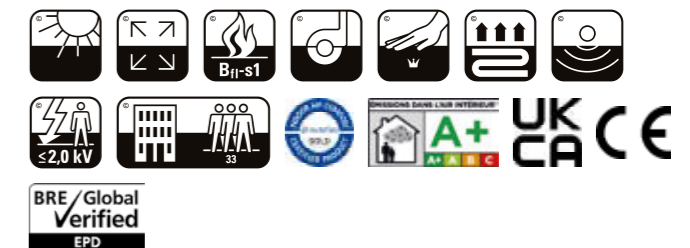
Plasma 2619
LRV - 4.39



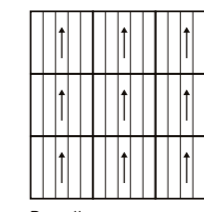
Grey Highlight Fusion 8226
LRV - 4.69

Specification

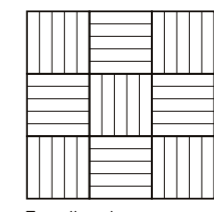
Style	Tufted 1/10" Gauge Loop Pile Tile
Yarn Construction	100% Solution Dyed / Space Dyed Nylon
Pile Yarn Weight	610g/m ²
Pile Height	3mm
Total Weight	4400g/m ²
Total Thickness	6mm
Backing	100% Envirobase – minimum of 75% recycled material
Additional Backing	Komfort Bac available on request
Tile Size	50cm x 50cm
Tiles Per Box	20 (5m ²)
Wear Classification	Heavy Contract Class 33
Luxury Class	LC1
Anti-Static	Suitable for use with computers. Less than 2Kv
Colour Fastness	Light (BS EN ISO 105:B02) >6 Shampoo (BS 1006:UK-TB:1990) 4-5 Dry Rubbing (BS EN ISO 105:B01) 4-5 Wet Rubbing (BS EN ISO 105:X12) 4-5
Flammability	BS5287 Assessment and labelling of Textile Floorcovering tested to BS4790 (Hot Metal Nut Test) – Low Radius of Char
BS EN 13501	Class Bfl-s1
Impact Noise Reduction	26dB
Castor Chair Test	Suitable for intensive use with castor chairs
Warranty	10 years
VOC Content	E1 in relation to EN 14041:2004
Environmental Status	BREEAM® A Rated



Laying Patterns



Broadloom



Tessellated

Workspace Linear



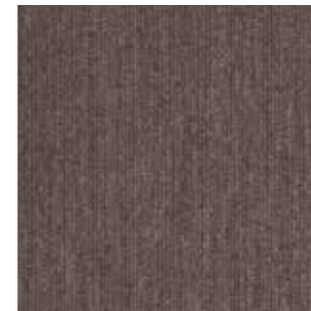
Islington Tunnel 5014



Islington Tunnel 5014
LRV - 5.54



Nobu Grey 7002
LRV - 15.67



Docklands Grey 3013
LRV - 9.01



Apollo Blue 5004
LRV - 4.42



Millennium Blue 3001
LRV - 8.18



Regents Canal 4018
LRV - 5.12



Victoria Blue 5181
LRV - 2.92



Clockhouse Blue 4009
LRV - 3.72



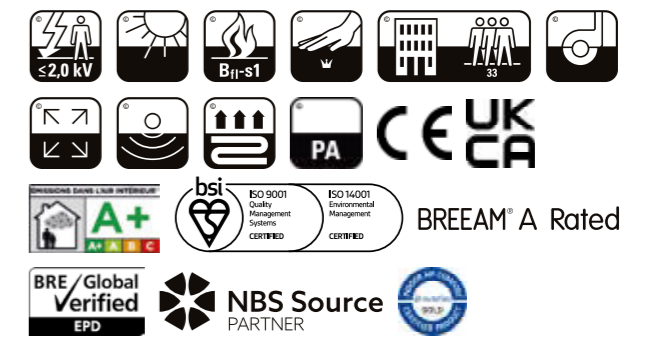
Westow Park Plum 3016
LRV - 7.50



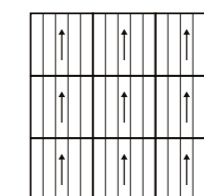
Broadway 3012
LRV - 8.17

Specification

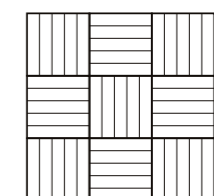
Style	Tufted 1/10" Gauge Loop Pile Tile
Yarn Construction	100% Solution Dyed / Space Dyed Nylon
Pile Yarn Weight	600g/m ²
Pile Height	3mm
Total Weight	4390g/m ²
Total Thickness	6mm
Backing	100% Envirobase – minimum of 75% recycled material
Additional Backing	Komfort Bac available on request
Tile Size	50cm x 50cm
Tiles Per Box	20 (5m ²)
Wear Classification	Heavy Contract Class 33
Luxury Class	LC1
Anti-Static	Suitable for use with computers. Less than 2Kv
Colour Fastness	Light (BS EN ISO 105:B02) >6 Shampoo (BS 1006:UK-TB:1990) 4-5 Dry Rubbing (BS EN ISO 105:B01) 4-5 Wet Rubbing (BS EN ISO 105:X12) 4-5
Flammability	BS5287 Assessment and labelling of Textile Floorcovering tested to BS4790 (Hot Metal Nut Test) – Low Radius of Char
BS EN 13501	Class Bfl-s1
Impact Noise Reduction	26dB
Castor Chair Test	Suitable for intensive use with castor chairs
Warranty	10 years
VOC Content	E1 in relation to EN 14041:2004
Environmental Status	BREEAM® A Rated



Laying Patterns



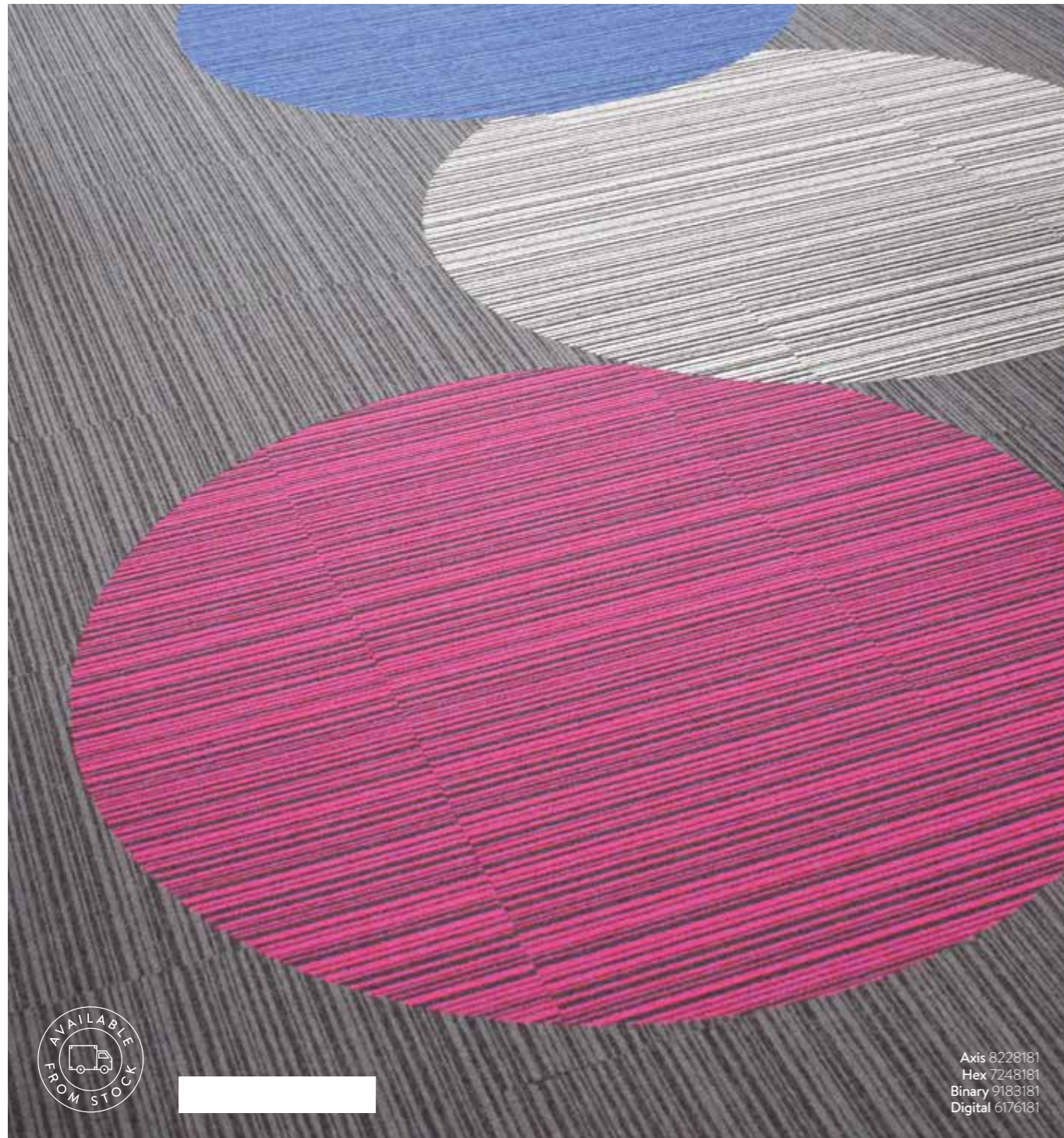
Broadloom



Tessellated

To see the true colour representation of the product, please refer to the shade card or request a sample, since monitors and lighting can affect the overall appearance of the colour/ tile.

Codec



Axis 8181
LRV - 4.00



Axis Accent 8228
LRV - 5.78



Binary 9191
LRV - 9.59



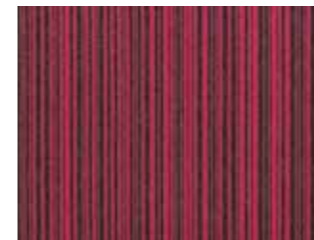
Binary Accent 9183
LRV - 17.50



Index 2181
LRV - 4.60



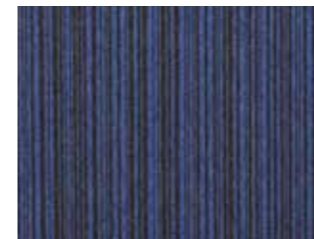
Index Accent 2247
LRV - 7.73



Hex 7181
LRV - 4.77



Hex Accent 7248
LRV - 7.22



Digital 6181
LRV - 4.32



Digital Accent 6176
LRV - 4.62



Pathway 5151
LRV - 11.59



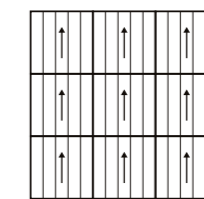
Pathway Accent 5229
LRV - 21.82

Specification

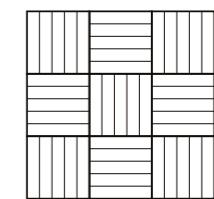
Style	Tufted 1/10" Gauge Loop Pile Tile
Yarn Construction	100% Econyl® Solution Dyed Nylon
Yarn Recycled Content	100%
Total Recycled Content	78%
Pile Yarn Weight	600g/m ²
Pile Height	3mm
Total Weight	4390g/m ²
Total Thickness	6mm
Backing	100% Envirobase – minimum of 75% recycled material
Additional Backing	Komfort Bac available on request
Tile Size	50cm x 50cm
Tiles Per Box	20 (5m ²)
Wear Classification	Heavy Contract Class 33
Luxury Class	LC1
Anti-Static	Suitable for use with computers. Less than 2Kv
Colour Fastness	Light (BS EN ISO 105:B02) >5 Shampoo (BS 1006:UK-TB:1990) 4-5 Dry Rubbing (BS EN ISO 105:B01) 4-5 Wet Rubbing (BS EN ISO 105:X12) 4-5
Flammability	BS5287 Assessment and labelling of Textile Floorcovering tested to BS4790 (Hot Metal Nut Test) – Low Radius of Char
BS EN 13501	Class Bfl-s1
Impact Noise Reduction	26dB
Castor Chair Test	Suitable for intensive use with castor chairs
Warranty	10 years
VOC Content	E1 in relation to EN 14041:2004
Environmental Status	BREEAM® A Rated



Laying Patterns



Broadloom



Tessellated



A variety of flexible options for commercial environments

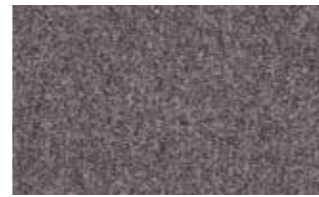
Loop Pile

Paragon Carpet Tiles' loop pile ranges deliver a variety of flexible options for all those involved in every aspect of commercial flooring.

Our loop pile carpet tile ranges are available in a wide range of colours and patterns to suit commercial office environments, residential developments and other sectors such as retail, healthcare and education. At Paragon Carpet Tiles we prioritise minimising our environmental impact. All our loop pile carpets benefit from our Envirobase backing that is made from 75% recycled material.

Workspace Loop	36	Sirocco	46
Diversity	38	Sirocco Stripe	48
Diversity Groove	40	Macaw	50
Vital	42	Macaw Stripe	52
Toccarre	44		

Workspace Loop



Silver 8031
LRV - 13.24



Platinum 9235
LRV - 8.62



Charcoal 8050
LRV - 6.36



Moorland 8052
LRV - 10.05



Blue Moon 6123
LRV - 7.68



Midnight 6159
LRV - 4.17



Blue Yonder 6245
LRV - 3.68



Magenta Rock 7246
LRV - 4.42



Rose 2152
LRV - 6.36



Sepia 1160
LRV - 7.20



Apple 6229
LRV - 21.82



Pampas 5157
LRV - 10.13



Graphite 8025
LRV - 5.51



Kingfisher 5329
LRV - 10.12



Onyx 8181
LRV - 2.47



Indigo 6049
LRV - 4.37



Blueberry 6155
LRV - 8.61



Lavender 7035
LRV - 8.20



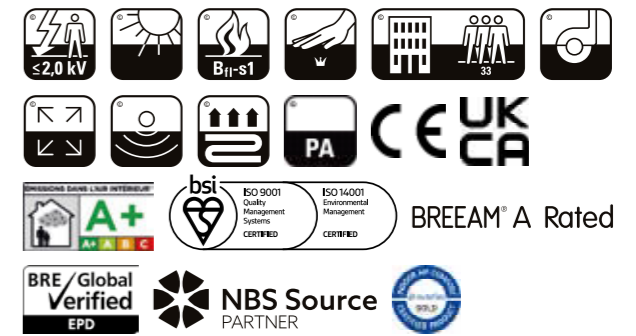
Ruby 2182
LRV - 5.35



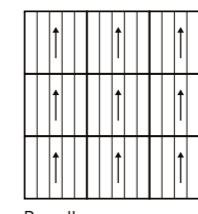
Sandstone 1015
LRV - 17.28

Specification

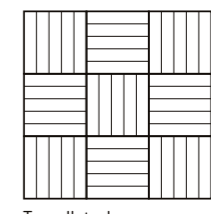
Style	Tufted 1/10" Gauge Loop Pile Tile
Yarn Construction	100% Econyl® Solution Dyed Nylon
Yarn Recycled Content	100%
Total Recycled Content	78%
Pile Yarn Weight	580g/m ²
Pile Height	3mm
Total Weight	4070g/m ²
Total Thickness	6mm
Backing	100% Envirobase – minimum of 75% recycled material
Additional Backing	Komfort Bac available on request
Tile Size	50cm x 50cm
Tiles Per Box	20 (5m ²)
Wear Classification	Heavy Contract Class 33
Luxury Class	LC1
Anti-Static	Suitable for use with computers. Less than 2Kv
Colour Fastness	Light (BS EN ISO 105:B02) >6 Shampoo (BS 1006:UK-TB:1990) 4-5 Dry Rubbing (BS EN ISO 105:B01) 4-5 Wet Rubbing (BS EN ISO 105:X12) 4-5
Flammability	BS5287 Assessment and labelling of Textile Floorcovering tested to BS4790 (Hot Metal Nut Test) – Low Radius of Char
BS EN 13501	Class Bfl-s1
Impact Noise Reduction	26dB
Castor Chair Test	Suitable for intensive use with castor chairs
Warranty	10 years
VOC Content	E1 in relation to EN 14041:2004
Environmental Status	BREEAM® A Rated



Laying Patterns



Broadloom



Tessellated

To see the true colour representation of the product, please refer to the shade card or request a sample, since monitors and lighting can affect the overall appearance of the colour/ tile.

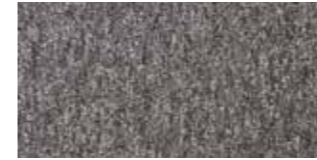
Diversity



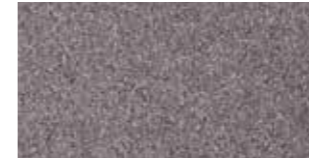
Panther 812
LRV - 2.94



Foundry Grey 810
LRV - 6.63



Lupus Grey 811
LRV - 5.32



London Stone 820
LRV - 10.04



Mouse 830
LRV - 16.28



Liberty 612
LRV - 3.13



Denim 616
LRV - 4.95



Electric 625
LRV - 5.12



Skylight 640
LRV - 7.65



Racing Green 505
LRV - 4.89



Grasshopper 550
LRV - 14.41



Razzmic Berry 740
LRV - 6.07



Purple Rain 750
LRV - 4.26



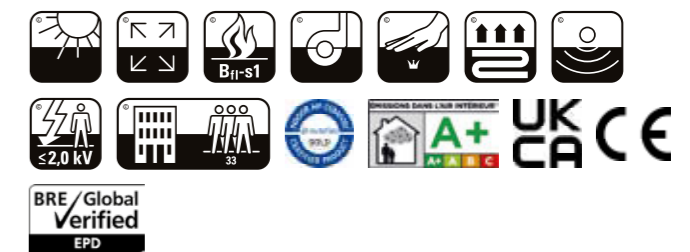
Blazer 210
LRV - 4.52



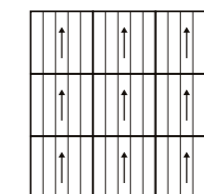
Bark 108
LRV - 9.82

Specification

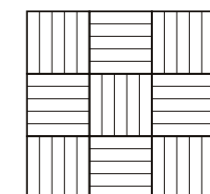
Style	Tufted 1/10" Gauge Loop Pile Tile
Yarn Construction	100% Solution Dyed Nylon
Pile Yarn Weight	540g/m ²
Pile Height	3mm
Total Weight	4330g/m ²
Total Thickness	5.5mm
Backing	100% Envirobase - minimum of 75% recycled material
Additional Backing	Komfort Bac available on request
Tile Size	50cm x 50cm
Tiles Per Box	20 (5m ²)
Wear Classification	Heavy Contract Class 33
Luxury Class	LC1
Anti-Static	Suitable for use with computers. Less than 2Kv
Colour Fastness	Light (BS EN ISO 105:B02) >6 Shampoo (BS 1006:UK-TB:1990) 4-5 Dry Rubbing (BS EN ISO 105:B01) 4-5 Wet Rubbing (BS EN ISO 105:X12) 4-5
Flammability	BS5287 Assessment and labelling of Textile Floorcovering tested to BS4790 (Hot Metal Nut Test) - Low Radius of Char
BS EN 13501	Class Bfl-s1
Impact Noise Reduction	26dB
Castor Chair Test	Suitable for intensive use with castor chairs
Warranty	10 years
VOC Content	E1 in relation to EN 14041:2004
Environmental Status	BREEAM® A Rated



Laying Patterns



Broadloom



Tessellated

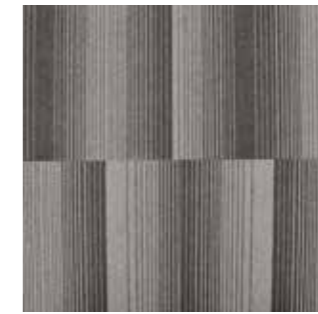
Diversity Groove



Vibe 810820
LRV - 8.04



Asha 812810
LRV - 4.39



Armada 812820
LRV - 5.31

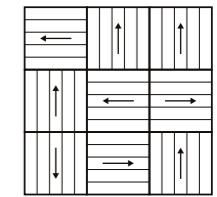


Jaxx 616810
LRV - 5.74



Gusto 616812
LRV - 3.57

Laying Patterns



Random Lay

Specification

Style	Tufted 1/10" Gauge Loop Pile Tile
Yarn Construction	100% Solution Dyed Nylon
Pile Yarn Weight	540g/m ²
Pile Height	3mm
Total Weight	4330g/m ²
Total Thickness	5.5mm
Backing	100% Envirobase – minimum of 75% recycled material
Additional Backing	Komfort Bac available on request
Tile Size	50cm x 50cm
Tiles Per Box	20 (5m ²)
Wear Classification	Heavy Contract Class 33
Luxury Class	LC1

Anti-Static	Suitable for use with computers. Less than 2Kv
Colour Fastness	Light (BS EN ISO 105:B02) >6 Shampoo (BS 1006:UK-TB:1990) 4-5 Dry Rubbing (BS EN ISO 105:B01) 4-5 Wet Rubbing (BS EN ISO 105:X12) 4-5
Flammability	BS5287 Assessment and labelling of Textile Floorcovering tested to BS4790 (Hot Metal Nut Test) – Low Radius of Char
BS EN 13501	Class Bfl-s1
Impact Noise Reduction	26dB
Castor Chair Test	Suitable for intensive use with castor chairs
Warranty	10 years
VOC Content	E1 in relation to EN 14041:2004
Environmental Status	BREEAM® A Rated



Vital



Titanium 8001
LRV - 7.11



Mercury 878316
LRV - 3.91



Tungsten 8316
LRV - 5.09



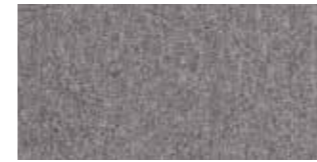
Carbon 8007
LRV - 2.54



Krypton 6100
LRV - 11.69



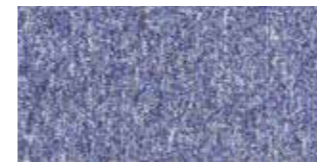
Hydrogen 6120
LRV - 9.40



Granite 8302
LRV - 9.86



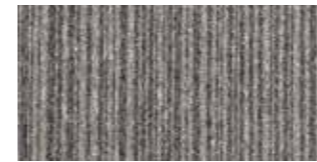
Glacier 6013
LRV - 6.90



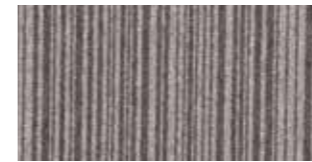
Marine 6310
LRV - 6.30



Sea Blue 6011
LRV - 5.49



Nickel 868302
LRV - 7.54



Zinc 878302
LRV - 6.91



Ice 876013
LRV - 4.85



Arctic 876310
LRV - 4.26



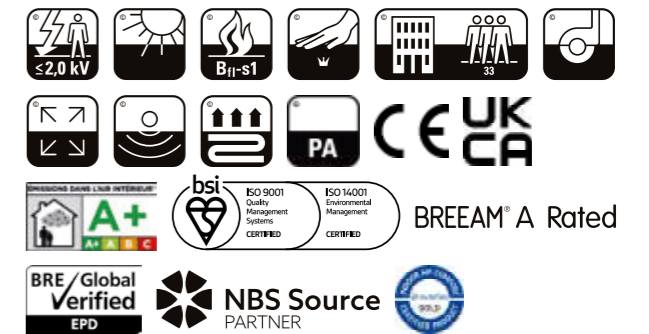
Zircon 6890
LRV - 10.93



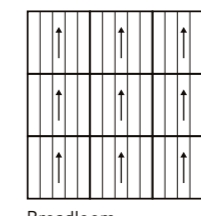
Oxide 1193
LRV - 8.77

Specification

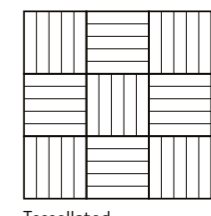
Style	Tufted 1/10" Gauge Loop Pile Tile
Yarn Construction	100% Solution Dyed Nylon
Pile Yarn Weight	500g/m ²
Pile Height	3mm
Total Weight	4090g/m ²
Total Thickness	5.5mm
Backing	100% Envirobase – minimum of 75% recycled material
Additional Backing	Komfort Bac available on request
Tile Size	50cm x 50cm
Tiles Per Box	20 (5m ²)
Wear Classification	Heavy Contract Class 33
Luxury Class	LC1
Anti-Static	Suitable for use with computers. Less than 2Kv
Colour Fastness	Light (BS EN ISO 105:B02) >6 Shampoo (BS 1006:UK-TB:1990) 4-5 Dry Rubbing (BS EN ISO 105:B01) 4-5 Wet Rubbing (BS EN ISO 105:X12) 4-5
Flammability	BS5287 Assessment and labelling of Textile Floorcovering tested to BS4790 (Hot Metal Nut Test) – Low Radius of Char
BS EN 13501	Class Bfl-s1
Impact Noise Reduction	24dB
Castor Chair Test	Suitable for intensive use with castor chairs
Warranty	10 years
VOC Content	E1 in relation to EN 14041:2004
Environmental Status	BREEAM® A Rated



Laying Patterns

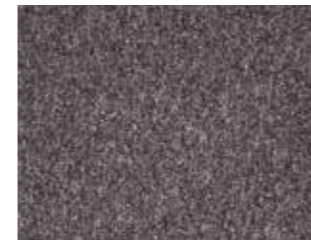


Broadloom

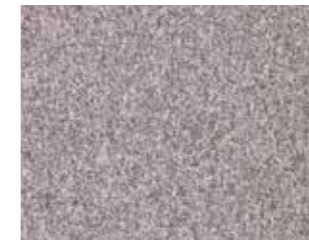


Tessellated

Toccarre



Termi 8554
LRV - 8.96



Grigia 9559
LRV - 16.22



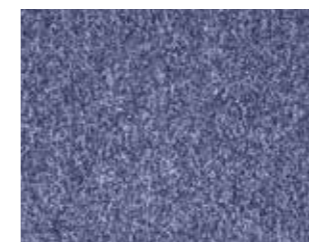
Tutto 6569
LRV - 2.19



Moderno 6553
LRV - 4.98



Azzurra 6339
LRV - 7.75



Blu 6558
LRV - 8.91



Fresco 1652
LRV - 7.85



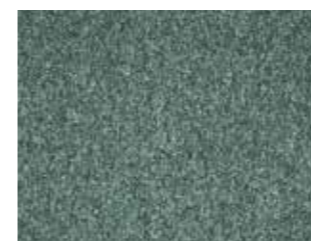
Marrone 1656
LRV - 8.88



Montagna 1549
LRV - 13.25



Menta 5560
LRV - 6.34



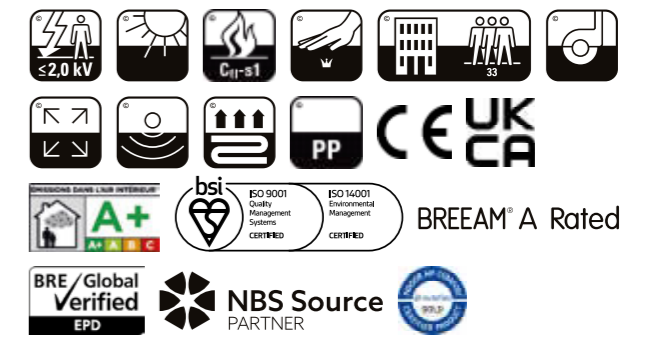
La Mela 5550
LRV - 8.36



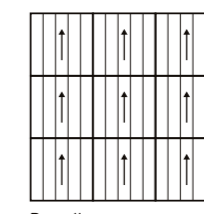
Desmo 2640
LRV - 4.52

Specification

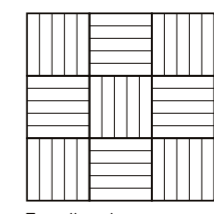
Style	Tufted 1/10" Gauge Loop Pile Tile
Yarn Construction	100% Solution Dyed Polypropylene
Pile Yarn Weight	630g/m ²
Pile Height	3mm
Total Weight	4420g/m ²
Total Thickness	6mm
Backing	100% Envirobase – minimum of 75% recycled material
Additional Backing	Komfort Bac available on request
Tile Size	50cm x 50cm
Tiles Per Box	20 (5m ²)
Wear Classification	Heavy Contract Class 33
Luxury Class	LC1
Anti-Static	Suitable for use with computers. Less than 2Kv
Colour Fastness	Light (BS EN ISO 105:B02) >5 Shampoo (BS 1006:UK-TB:1990) 4-5 Dry Rubbing (BS EN ISO 105:B01) 4-5 Wet Rubbing (BS EN ISO 105:X12) 4-5
Flammability	BS5287 Assessment and labelling of Textile Floorcovering tested to BS4790 (Hot Metal Nut Test) – Low Radius of Char
BS EN 13501	Class Bfl-s1
Impact Noise Reduction	25dB
Castor Chair Test	Suitable for intensive use with castor chairs
Warranty	10 years
VOC Content	E1 in relation to EN 14041:2004
Environmental Status	BREEAM® A Rated



Laying Patterns



Broadloom

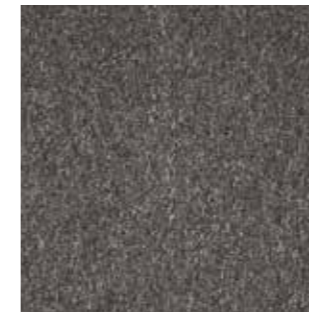


Tessellated

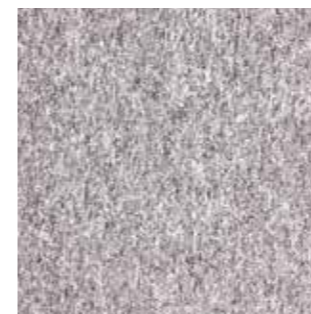
Sirocco



Jet 821S
LRV - 2.78



Quartz 101S
LRV - 5.15



Pewter 171S
LRV - 15.55



Sapphire 501S
LRV - 4.95



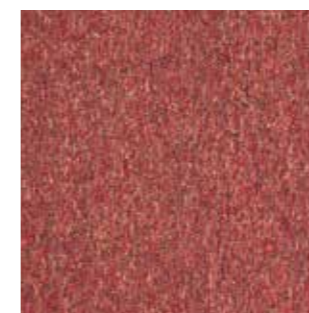
Blue John 896S
LRV - 5.78



Topaz 458S
LRV - 8.50



Tempest 277S
LRV - 3.22



Paprika 459S
LRV - 6.71



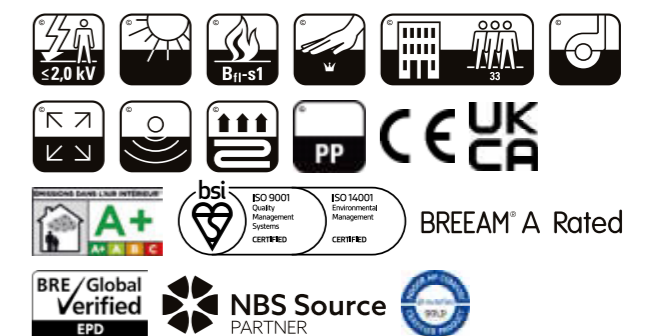
Tanzanite 743S
LRV - 4.84



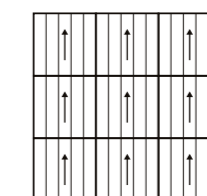
Lime 318S
LRV - 15.29

Specification

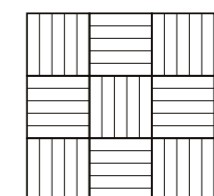
Style	Tufted 1/10" Gauge Loop Pile Tile
Yarn Construction	100% Solution Dyed Polypropylene
Pile Yarn Weight	580g/m ²
Pile Height	3.5mm
Total Weight	4370g/m ²
Total Thickness	6.5mm
Backing	100% Envirobase – minimum of 75% recycled material
Additional Backing	Komfort Bac available on request
Tile Size	50cm x 50cm
Tiles Per Box	20 (5m ²)
Wear Classification	Heavy Contract Class 33
Luxury Class	LC1
Anti-Static	Suitable for use with computers. Less than 2Kv
Colour Fastness	Light (BS EN ISO 105:B02) >6 Shampoo (BS 1006:UK-TB:1990) 4-5 Dry Rubbing (BS EN ISO 105:B01) 4-5 Wet Rubbing (BS EN ISO 105:X12) 4-5
Flammability	BS5287 Assessment and labelling of Textile Floorcovering tested to BS4790 (Hot Metal Nut Test) – Low Radius of Char
BS EN 13501	Class Bfl-s1
Impact Noise Reduction	24dB
Castor Chair Test BS EN 985	R value 3.3 - Suitable for intensive use
Warranty	10 years
VOC Content	E1 in relation to EN 14041:2004
Environmental Status	BREEAM® A Rated



Laying Patterns



Broadloom



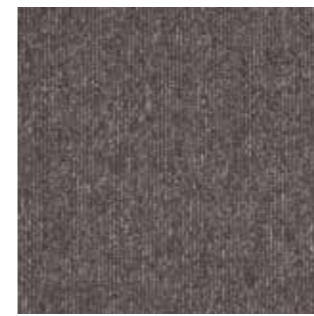
Tessellated

To see the true colour representation of the product, please refer to the shade card or request a sample, since monitors and lighting can affect the overall appearance of the colour/ tile.

Sirocco Stripe



Spearmint 318101S
Liquorice 821101S



Liquorice 821101S
LRV - 3.79



Humbug 101171S
LRV - 12.76



Blue Candy 501458S
LRV - 7.23

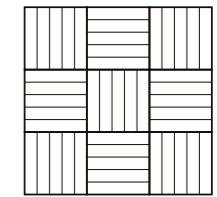


Bubblegum 821458S
LRV - 5.66



Spearmint 318101S
LRV - 9.89

Laying Patterns

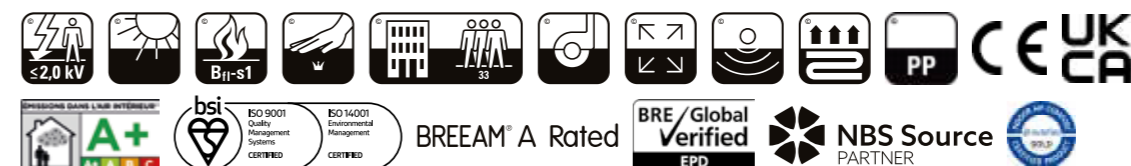


Tessellated

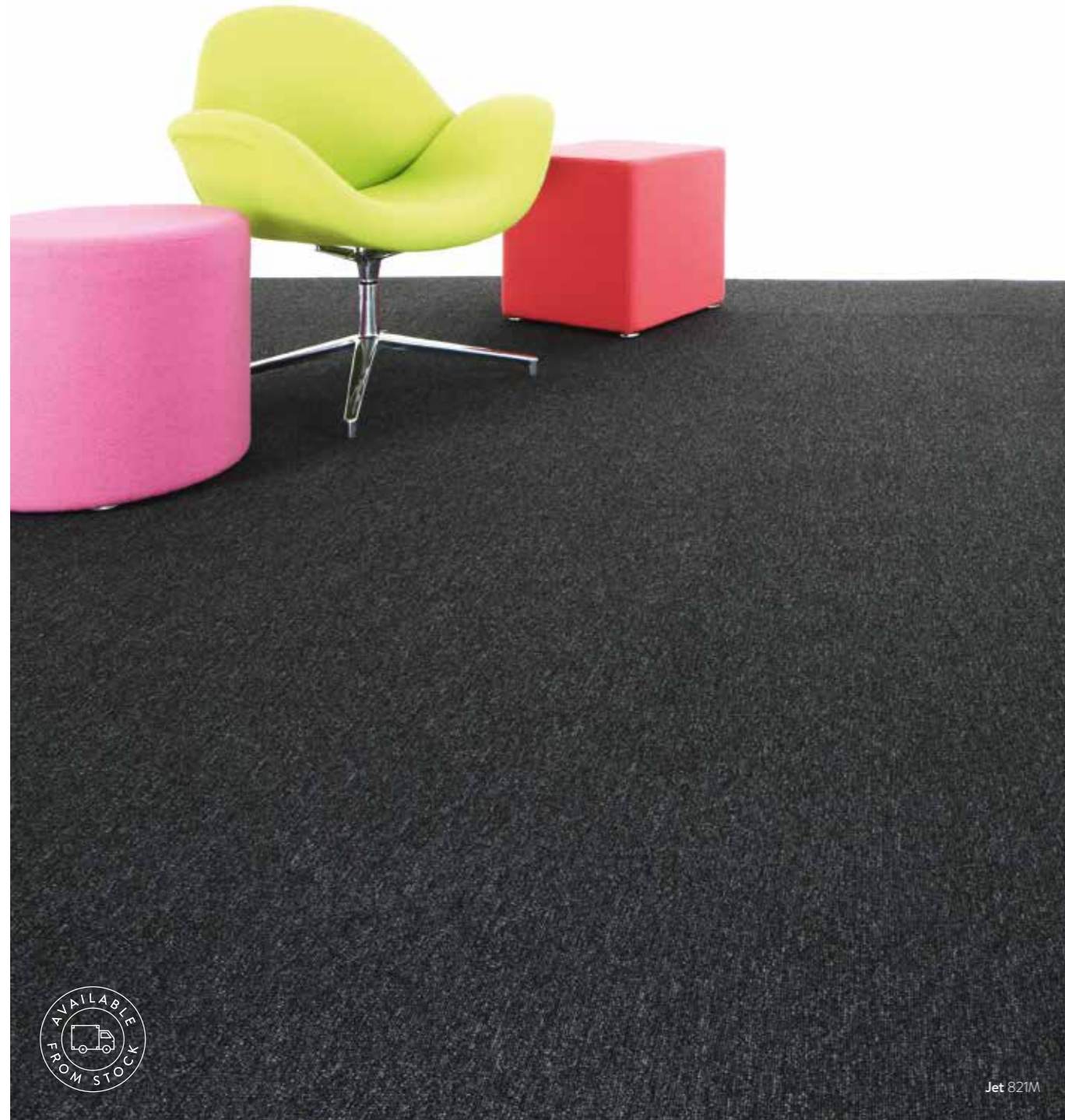
Specification

Style	Tufted 1/10" Gauge Loop Pile Tile
Yarn Construction	100% Solution Dyed Polypropylene
Pile Yarn Weight	580g/m ²
Pile Height	3.5mm
Total Weight	4370g/m ²
Total Thickness	6.5mm
Backing	100% Envirobase – minimum of 75% recycled material
Additional Backing	Komfort Bac available on request
Tile Size	50cm x 50cm
Tiles Per Box	20 (5m ²)
Wear Classification	Heavy Contract Class 33
Luxury Class	LC1

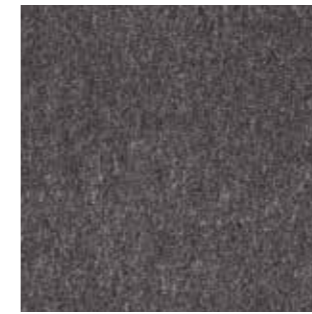
Anti-Static	Suitable for use with computers. Less than 2Kv
Colour Fastness	Light (BS EN ISO 105:B02) >6 Shampoo (BS 1006:UK-TB:1990) 4-5 Dry Rubbing (BS EN ISO 105:B01) 4-5 Wet Rubbing (BS EN ISO 105:X12) 4-5
Flammability	BSS287 Assessment and labelling of Textile Floorcovering tested to BS4790 (Hot Metal Nut Test) – Low Radius of Char
BS EN 13501	Class Bfl-s1
Impact Noise Reduction	24dB
Castor Chair Test	Suitable for intensive use with castor chairs
Warranty	10 years
VOC Content	E1 in relation to EN 14041:2004



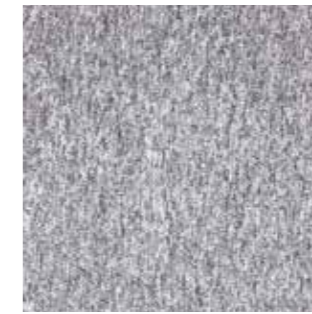
Macaw



Jet 821M
LRV - 2.68



Quartz 101M
LRV - 5.94



Pewter 171M
LRV - 15.29



Sapphire 501M
LRV - 5.02

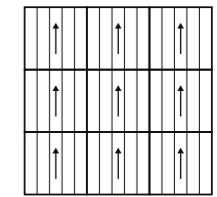


Aegean 831M
LRV - 8.17

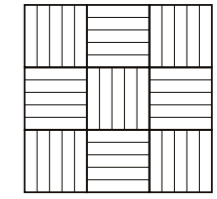


Paprika 459M
LRV - 6.24

Laying Patterns



Broadloom

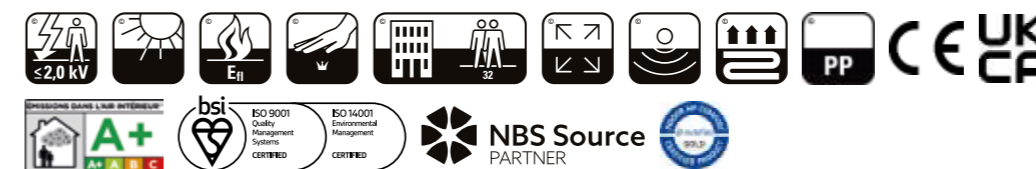


Tessellated

Specification

Style	Tufted 1/10" Gauge Loop Pile Tile
Yarn Construction	100% Solution Dyed Polypropylene
Pile Yarn Weight	420g/m ²
Pile Height	3.5mm
Total Weight	4210g/m ²
Total Thickness	6mm
Backing	100% Envirobase – minimum of 75% recycled material
Tile Size	50cm x 50cm
Tiles Per Box	20 (5m ²)
Wear Classification	General Contract
Luxury Class	LC1

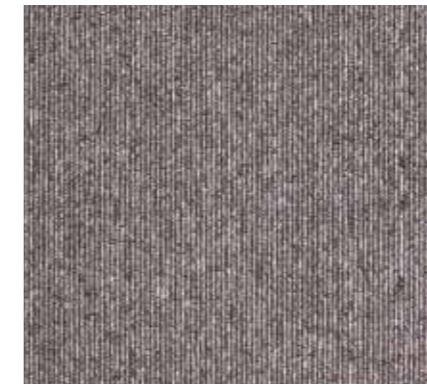
Anti-Static	Suitable for use with computers. Less than 2Kv
Colour Fastness	Light (BS EN ISO 105:B02) >6 Shampoo (BS 1006:UK-TB:1990) 4-5 Dry Rubbing (BS EN ISO 105:B01) 4-5 Wet Rubbing (BS EN ISO 105:X12) 4-5
Flammability	BS5287 Assessment and labelling of Textile Floorcovering tested to BS4790 (Hot Metal Nut Test) – Low Radius of Char
BS EN 13501	Class Efl
Impact Noise Reduction	22dB
VOC Content	E1 in relation to EN 14041:2004



Macaw Stripe



Jet/Quartz 821101M
LRV - 3.82



Quartz/Pewter 101171M
LRV - 12.56

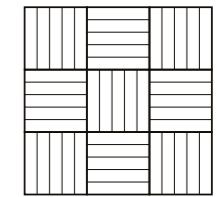


Aegean/Sapphire 831501M
LRV - 6.75



Lime/Quartz 318101M
LRV - 9.33

Laying Patterns



Tessellated

Specification

Style	Tufted 1/10" Gauge Loop Pile Tile
Yarn Construction	100% Solution Dyed Polypropylene
Pile Yarn Weight	420g/m ²
Pile Height	3.5mm
Total Weight	4210g/m ²
Total Thickness	6mm
Backing	100% Envirobase – minimum of 75% recycled material
Tile Size	50cm x 50cm
Tiles Per Box	20 (5m ²)
Wear Classification	General Contract
Luxury Class	LC1

Anti-Static	Suitable for use with computers. Less than 2Kv
Colour Fastness	Light (BS EN ISO 105:B02) >6 Shampoo (BS 1006:UK-TB:1990) 4-5 Dry Rubbing (BS EN ISO 105:B01) 4-5 Wet Rubbing (BS EN ISO 105:X12) 4-5
Flammability	BS5287 Assessment and labelling of Textile Floorcovering tested to BS4790 (Hot Metal Nut Test) – Low Radius of Char
BS EN 13501	Class Efl
Impact Noise Reduction	22dB
VOC Content	E1 in relation to EN 14041:2004





A variety of flexible options for commercial environments

Cut Pile

Paragon Carpet Tiles' cut pile range has a wide range of colours to suit commercial office environments, residential developments and other sectors such as retail, healthcare and education.








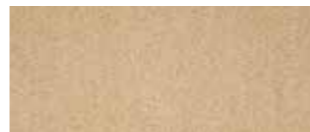








All our cut pile carpets benefit from an impact noise reduction of 28dB, making them ideal for use in large multi-storey buildings.

Maestro	56
Workspace Cut Pile	58

Maestro



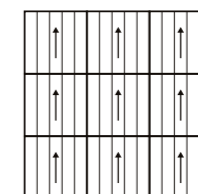
 Charcoal 903 LRV - 3.05	 Twilight Cinders 991 LRV - 2.18
 Steel 902 LRV - 5.88	 Silver 900 LRV - 12.15
 Night Jewel 994 LRV - 12.55	 Woodland Fern* 662 LRV - 16.47
 Deep Blue 103 LRV - 2.72	 Brooklyn Nights 963 LRV - 5.06
 Royal Regatta 553 LRV - 3.36	 Sapphire* 101 LRV - 6.43
 Azure Fusion* 595 LRV - 6.81	 Celestial Blue* 569 LRV - 10.34
 Teal 100 LRV - 9.23	 Blue Diamond 506 LRV - 12.87
 Emerald Orchestra* 511 LRV - 9.26	 Turquoise* 200 LRV - 7.76
 Dark Green 201 LRV - 3.95	 Dublin Bay 613 LRV - 9.18

 Indian Ivy* 601 LRV - 18.47	 Cocoa Blush 830 LRV - 5.94
 Sycamore 700 LRV - 6.22	 Dusty Pink* 800 LRV - 5.97
 Delhi Bazaar 463 LRV - 6.85	 Sunflower Symphony* 827 LRV - 12.76
 Velvet Truffle 823 LRV - 10.99	 Beige* 600 LRV - 17.94
 Earth Glaze 224 LRV - 18.24	 Bracken Salts 817 LRV - 19.35
 Gold* 300 LRV - 22.17	 Nutshell 386 LRV - 22.44
 Coral 400 LRV - 15.53	 Auburn Falls* 322 LRV - 16.83
 Claret 500 LRV - 4.16	 Volcanic Splash* 314 LRV - 7.96
 Hot Paprika 307 LRV - 8.79	 Red 501 LRV - 5.50

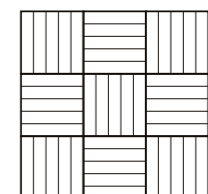
Specification	
Style	Tufted 1/10" Gauge Cut Pile Tile
Yarn Construction	100% Nylon 66
Pile Yarn Weight	1050g/m ²
Pile Height	5mm
Total Weight	4650g/m ²
Total Thickness	8mm
Backing	100% Envirobase - minimum of 75% recycled material
Additional Backing	Komfort Bac available on request
Tile Size	50cm x 50cm
Tiles Per Box	20 (5m ²)
Wear Classification	Heavy Contract Class 33
Luxury Class	LC2
Anti-Static	Suitable for use with computers. Less than 2Kv
Colour Fastness	Light (BS EN ISO 105:B02) >5 Wet Rubbing (BS EN ISO 105:X12) >4
Flammability	BS5287 Assessment and labelling of Textile Floorcovering tested to BS4790 (Hot Metal Nut Test) - Low Radius of Char
BS EN 13501	Class Bfl-s1
Impact Noise Reduction	28dB
Castor Chair Test	Suitable for intensive use with castor chairs
Warranty	10 years
VOC Content	E1 in relation to EN 14041:2004



Laying Patterns



Broadloom



Tessellated

*These colours are subject to a minimum order quantity of 200m²

To see the true colour representation of the product, please refer to the shade card or request a sample, since monitors and lighting can affect the overall appearance of the colour/ tile.

Workspace Cut Pile



Steel Grey 8031C
LRV - 11.62



Iron Grey 8025C
LRV - 5.26



Coastal Blue 6159C
LRV - 3.59



Sky Blue 6123C
LRV - 7.34



Biscay Blue 6051C
LRV - 3.35



Nordic Green 5011C
LRV - 8.15



Gecko Green 5009C
LRV - 9.72



Grape Blue 6155C
LRV - 6.91



Lilac 7035C
LRV - 6.59



Salsa 7040C
LRV - 3.28



Cayenne 3038C
LRV - 6.11



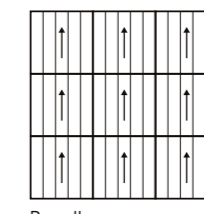
Wheat 1015C
LRV - 16.70

Specification

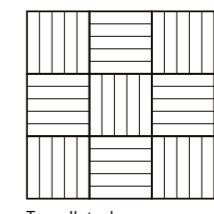
Style	Tufted 1/10" Gauge Cut Pile Tile
Yarn Construction	100% Econyl® Solution Dyed Nylon
Yarn Recycled Content	100%
Total Recycled Content	79%
Pile Yarn Weight	850g/m ²
Pile Height	5mm
Total Weight	4650g/m ²
Total Thickness	8.5mm
Backing	100% Envirobase – minimum of 75% recycled material
Tile Size	50cm x 50cm
Tiles Per Box	16 (4m ²)
Wear Classification	Heavy Contract Class 33
Luxury Class	LC2
Anti-Static	Suitable for use with computers. Less than 2Kv
Colour Fastness	Light (BS EN ISO 105:B02) 6 Wet Rubbing (BS EN ISO 105:X12) 4-5
Flammability	BS5287 Assessment and labelling of Textile Floorcovering tested to BS4790 (Hot Metal Nut Test) – Low Radius of Char
BS EN 13501	Class Bfl-s1
Impact Noise Reduction	28dB
Castor Chair Test	Suitable for intensive use with castor chairs
Warranty	10 years
VOC Content	E1 in relation to EN 14041:2004



Laying Patterns



Broadloom



Tessellated



A host of unique colours and finishes

Luxury Commercial Vinyl

Paragon Carpet Tiles' luxury commercial vinyl products, Rappórt and Duera, feature a host of unique colours and finishes and are made to be paired with the company's extensive range of commercial carpet tiles.

Luxury vinyl flooring is the perfect choice for areas that will benefit from an easy-to-clean surface such as cafeterias and breakout spaces, as well as classrooms or healthcare facilities.

High-end residential developments that require modern, stylish flooring in kitchens and dining rooms are the perfect setting for LVT flooring due to the diverse array of patterns that mimic natural wood and stone, as well as their compatibility with underfloor heating.

Rappórt	62
Duera	64

Rappórt



Wood Effect



Grey Limed Oak 2798



Lakeside Pine 2889



Burnt Sienna 2893



Shadow Ash 2894



French Grey Elm* 2895



Bowland Oak 2896



Midsummer Oak 2897



Orchard Oak 2898



Kentucky Timberwood 2899



Dockyard Oak 2947



Chalet Oak 2948

Stone Effect



Seasoned Concrete 2969



Copper Metalstone 2970



Dark Metalstone 2979



Fresh Concrete 2799



Ashen Concrete 2796

Specification

Style	Luxury Commercial Vinyl
Material	Heterogeneous PVC
Surface Treatment	PUR
Total Weight	4290g/m ²
Total Thickness	2.5mm
Wear Layer Thickness	0.55mm
Wood Effect Plank Size	18.42cm x 121.92cm *15.24cm x 121.92cm
Stone Effect Plank Size	45.72cm x 91.44cm
Wood Effect Planks Per Box	15 (3.37m ²)
Stone Effect Planks Per Box	8 (3.34m ²)

Anti-Static	Suitable for use with computers. Less than 2Kv
Colour Fastness	Light (BS EN ISO 105:B02) ≥6
Flammability BS EN 13501	Class Bfl-s1
Castor Chair Test	Suitable for use with castor chairs
Dimensional Stability	<0.1%
Residual Indentation	0.05mm
Underfloor Heating	Suitable, maximum 27°C



*15.24cm x 121.92cm

To see the true colour representation of the product, please refer to the shade card or request a sample, since monitors and lighting can affect the overall appearance of the colour/ tile.

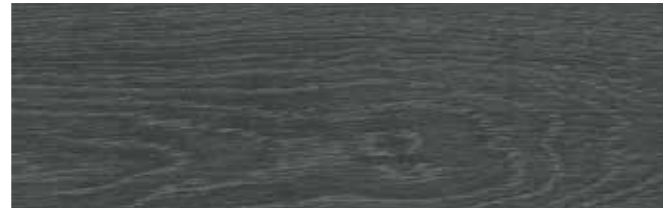


Duera



Edwardian Oak 3131
Barleycorn Oak 3128

Wood Effect



Twilight Ash 3121



Barleycorn Oak 3128



Devonshire Oak 3129



Edwardian Oak 3131



Dark Linear Wood 3123



Wharf Side Ash 3124



Hemingway Oak 3126

Stone Effect



Polished Cement Tile 3132



Alloyed Cement Tile 3133



Downtown Cement Tile 3135



Suburban Cement Tile 3134



Cliffside Slate Plank 3136

Specification

Style	Luxury Commercial Vinyl
Material	Heterogeneous PVC
Surface Treatment	PUR
Total Weight	8000g/m ²
Total Thickness	5mm
Wear Layer Thickness	0.7mm
Wood Effect Plank Size	17.78cm x 121.92cm
Stone Effect Plank Size	30.48cm x 60.96cm
Stone Effect Tile Size	60cm x 60cm
Wood Effect Planks Per Box	10 (2.17m ²)
Stone Effect Planks Per Box	8 (1.86m ²)
Stone Effect Tiles Per Box	6 (2.16m ²)

Anti-Static	Suitable for use with computers. Less than 2Kv
Colour Fastness	Light (BS EN ISO 105:B02) ≥6
Flammability BS EN 13501	Class Bfl-s1
Castor Chair Test	Suitable for use with castor chairs
Dimensional Stability	<0.1%
Residual Indentation	0.05mm
Underfloor Heating	Suitable, maximum 27°C



To see the true colour representation of the product, please refer to the shade card or request a sample, since monitors and lighting can affect the overall appearance of the colour/ tile.





**Mat.
Works**
ENTRANCE
SOLUTIONS

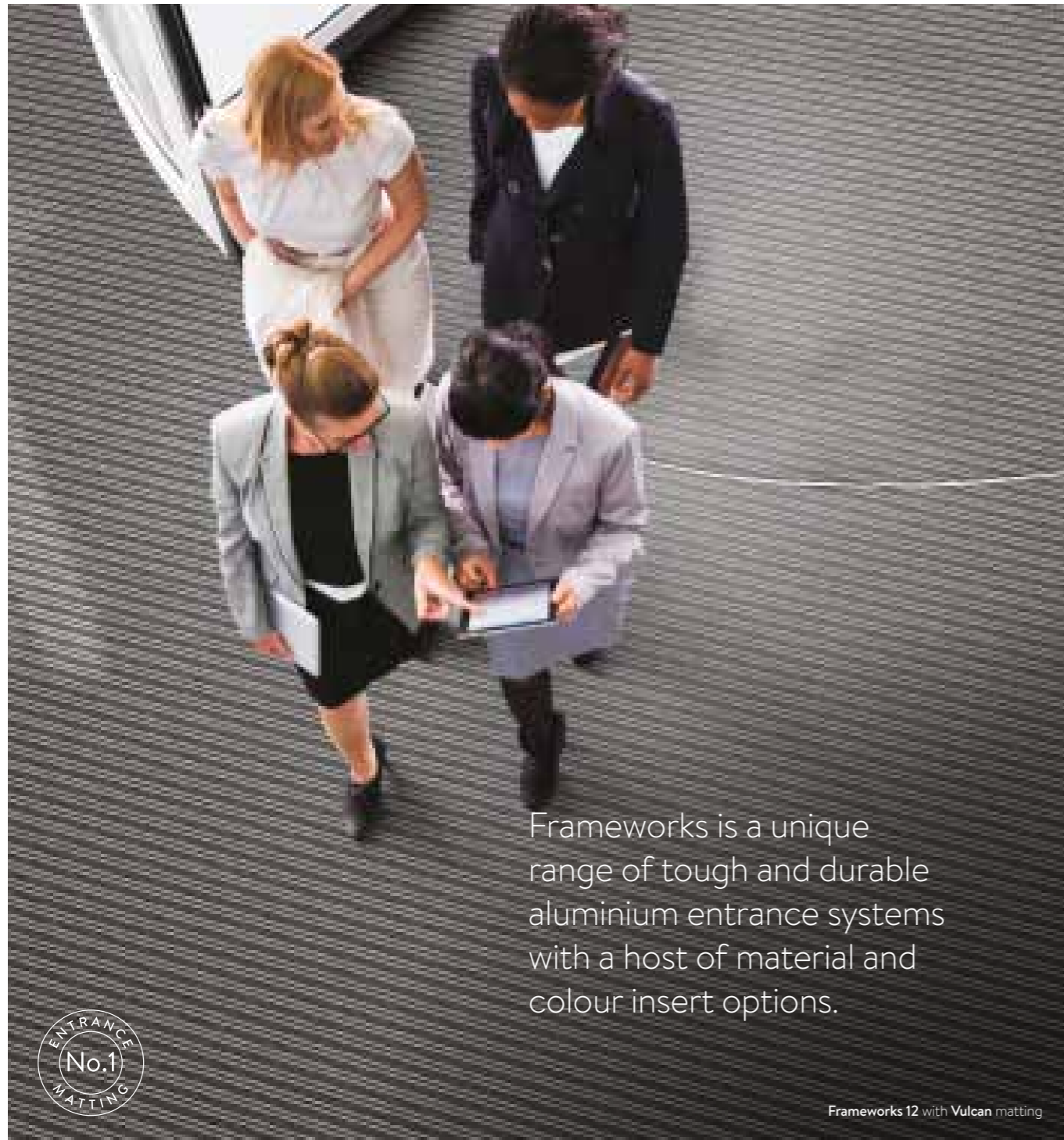
Primary and secondary entrance matting solutions

Mat.Works Entrance Solutions is our sister company, specialising in primary and secondary matting that is designed to empower the installer with a simple installation process and modular matting options.

We also offer a free site survey, and our experts are on-hand to help you achieve the desired finish for any commercial building.

Primary		Secondary	
Frameworks	68	Workspace Entrance	78
Treadloc 25	70	Frontier Fusion	80
Entrack 50	74	CrossFort	82
Treadsure 205	76		

Primary Frameworks



Frameworks is a unique range of tough and durable aluminium entrance systems with a host of material and colour insert options.

Frameworks 12 with Vulcan matting



Colourways



MW Rib
Light Grey



MW Rib
Anthracite



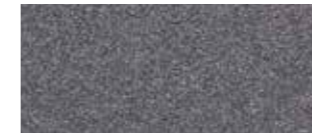
MW Rib
Natural



MW Rib
HD Deep Blue



Workspace Entrance
Vulcan



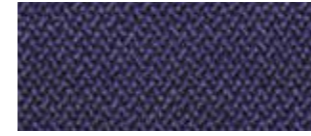
Workspace Entrance
Victor



Workspace Entrance
Viscount



Workspace Entrance
Vixen



Premier
Dark Blue



Premier
Charcoal



Premier
Mercury



EXT Mat
Anthracite



MW Maxim
Light Grey



MW Maxim
Anthracite



MW Maxim
Deep Blue



MW Maxim
Natural

Accessories



T-Bar



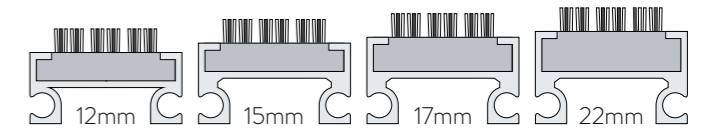
10mm-25m, Framing



MW Ramping System

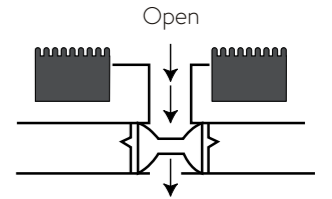
How to choose your Frameworks system:

Stage 1: Select your height

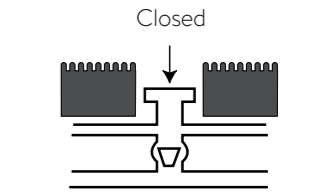


Stage 2: Select your construction

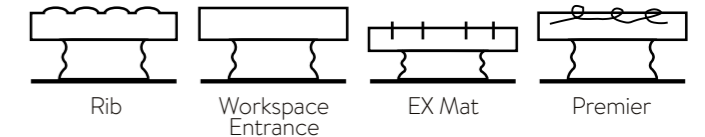
Open
Collect dirt and moisture inside the mat/matwell rather than on the surface. Rollable for cleaning.



Closed
Dirt and moisture collected on the surface of the mat.



Stage 3: Select your insert



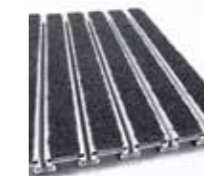
C = Closed
OP = Open
CS = Closed Scraper
DR = Drainable



Frameworks 12



Frameworks 15C



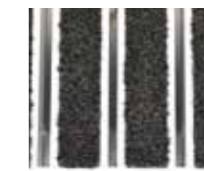
Frameworks 17OP



Frameworks 17C



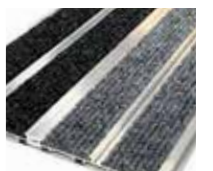
Frameworks 17CS



Frameworks 22OP



Frameworks 22C



Frameworks Clic-Fix

Primary Treadloc 25



Treadloc 25 with Workspace Entrance Victor



Treadloc 25 by Mat.Works is a revolutionary modular matting solution. Manufactured from nitrile rubber, the 25cm x 25cm tile may be small but packs an almighty punch when it comes to performance.

Specifically designed to withstand heavy footfall, Treadloc 25 will not expand, contract, fade or become brittle, nor will it bend or buckle under pressure making it an ideal heavy contract solution for entrance areas in every sector. Unlike aluminium solutions, Treadloc 25 can withstand slight undulations in the sub-floor, which are sometimes unavoidable, without compromising the strength and performance of the product.

Treadloc 25 tiles are easily interchangeable and designed with interlocking male and female components for ease of installation. The versatile tiles can be quarter-turned during installation to create a chequerboard effect allowing for multi-directional entrances. There is also the added benefit of being able to purchase individual Treadloc 25 tiles, meaning any damaged tiles can be replaced with ease.



Workspace Entrance Vulcan

Workspace Entrance Victor

Premier Dark Blue

Premier Charcoal

Workspace Entrance Viscount

Workspace Entrance Vixen

Premier Mercury

MW Maxim Anthracite
MW Maxim Yellow

MW Rib Light Grey

MW Rib Anthracite

MW Rib Natural

MW Rib HD Deep Blue

Specification

Dimensions	25cm x 25cm
Locking Guides	Easy inter-locking system as standard. Removable male and female connectors.
Composition	Nitrile Rubber Composition
Dry Rubbing	(BS1006:X12) 4 - 5
Wet Shampoo	(851006:UK-TB) 4 - 5
Performance	Nitrile Rubber is resistant to oil, grease & fuel.
Resistant to stable temperatures	40-180°C
Wear Classification	Heavy Contract Class 33
Product Weight	Diamond 12,300g/m ² Premier 13,500g/m ²
Flammability	BS EN 13501 Class Cfl-s2

Treadloc 25 provides a flammability rating of Cfl-s2 (BS EN 14041:2004)



Perfect for Healthcare

The nitrile rubber in Treadloc 25 is now proven to have anti-microbial properties, combating the spread of hospital-acquired infections, including MRSA.

The product has been tested to ISO 22196, which specifies a method of evaluating the antibacterial activity of antibacterial-treated plastics, and other non-porous surfaces of products. The results showed that the copper in the Treadloc 25 killed 99.29% of MRSA Bacterium.

Coefficient of Friction test

When examined under the Coefficient of Friction test (TRRL Pendulum test in accordance with BS 7976-2:200+A1:2013), Treadloc 25 has been proven to provide a low risk for slips in both dry and wet conditions.

Twice the weight of leading competitor products - twice the durability.



Primary Treadloc 25 Ramping Solution



Treadloc 25
Workspace Entrance
Victor Inserts

**No matwell or recess?
No problem! Treadloc 25 has
an optional click-fit ramping
system.**

Treadloc 25 can be surface-mounted, with the option of a heavy duty click-fit ramping system, making the product suitable for buildings without a matwell or recess.

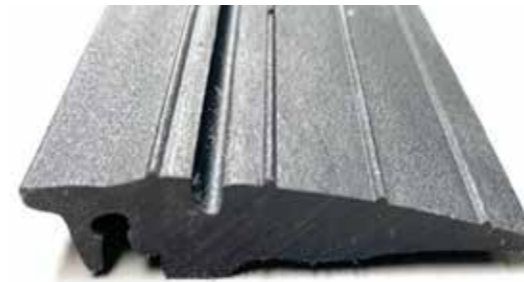
The heavy-duty ramped edges allow wheeled and trolley access, as well as helping to prevent trip accidents. The system allows our popular products to be used to create a 'surface matwell' where a mat is laid directly on top of the floor.

Key Features

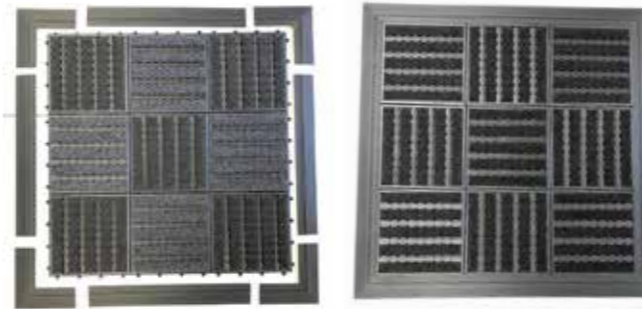
- Ramping system to enable Treadloc 25 to be surface-mounted
- Click fit mechanism for easy installation
- Made from durable nitrile rubber
- Pre-mitred corners for accuracy
- Available in 2m lengths
- Incorporate a colour of your choice into the ramp debris channel, for a striking and stand-out finish



Dimensions: W 125mm x H 125mm



Dimensions: W 66mm x L 2000mm x H 12mm



Treadloc 25 surface mounted with ramping solution



Treadloc 25 shown with ramping solution



Treadloc 25 shown in recessed matwells

Primary Entrack 50



A flexible modular system made from TPE which will not expand, contract or fade in colour. An extremely versatile product, Entrack 50 carpet strips are interchangeable and are suitable for entrances with or without matwells.



Entrack 50
MW Rib Anthracite Inserts

Colourways



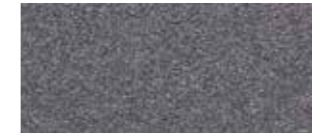
MW Rib
Light Grey



MW Rib
Anthracite



Workspace Entrance
Vulcan



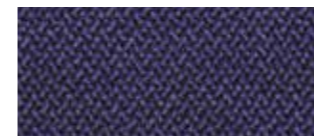
Workspace Entrance
Victor



Workspace Entrance
Viscount



Workspace Entrance
Vixen



Premier
Dark Blue



Premier
Charcoal



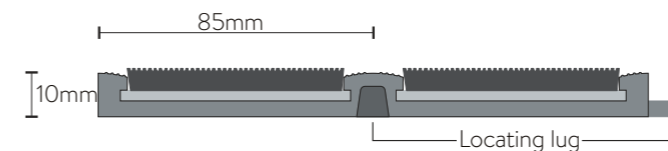
Premier
Mercury



EXT Mat
Anthracite



With its click fit connections, Entrack 50 can be installed with ease. **Connect Entrack 50 together to create any size entrance mat required:**



Specification

Dimensions	50cm x 50cm
Insert Width	85mm
Connection	Integral 'lock down' fixing system
Colourway Options	10
Environmental Options	Recyclable and reusable
Base	Non-PVC polymer base

Key Features

- High specification low profile platform
- Easy to cut and shape to bespoke patterns
- Recyclable and reusable
- Will not tap, bounce or buckle under heavy footfall
- Easily cut and trimmed on site
- Made in Britain
- Suitable for external or internal areas

Primary Treadsure 205



Treadsure 205
MW Rib Anthracite Inserts



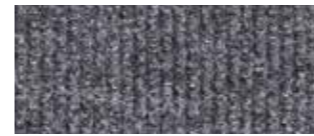
Treadsure 205 by Mat.Works Entrance Solutions has been designed not just for extremely heavy footfall but also with wheeled traffic entrances in supermarkets, retail, education, and healthcare in mind - providing an alternative to aluminium matting systems.

Manufactured from nitrile rubber to provide optimum performance and has a host of key features that set the product apart from any other standard modular matting system.

One of these is its sheer durability, which is provided by the product size and weight, ensuring it is one of the heaviest modular matting solutions available on the market. This sturdiness of Treadsure 205 provides significant durability when installed. It will not expand, contract, fade or become brittle, nor will it bend or buckle under pressure making it an ideal heavy contract solution for entrance areas in every sector.

The weight ensures, when installed correctly, that Treadsure will not move or slip in the matwell. It also makes installation easier, as there are no click or interlocking systems. If more than one system is needed, modules can simply be placed next to each other - significantly reducing any potential installation times.

Colourways



MW Rib
Light Grey



MW Rib
Anthracite



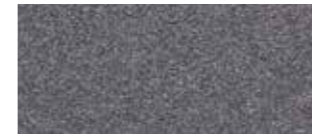
MW Rib
Natural



MW Rib
HD Deep Blue



Workspace Entrance
Vulcan



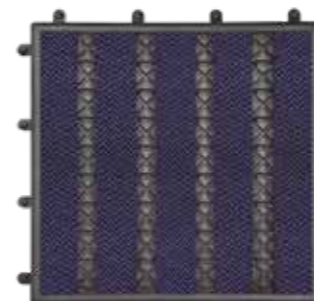
Workspace Entrance
Victor



Workspace Entrance
Viscount



Workspace Entrance
Vixen



Premier
Dark Blue



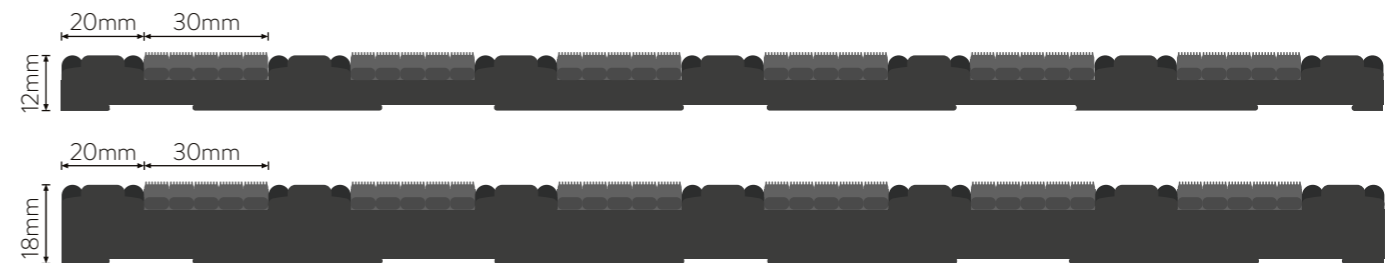
Premier
Charcoal



Premier
Mercury



MW Maxim Anthracite
MW Maxim Yellow



Specification

Module Size	205cm x 50cm x 12mm / 18mm
Seamless Installation	Seamlessly place two or more modules next to each other without the need for any locking mechanism
Composition	Nitrile rubber composition
Performance	Nitrile rubber is resistant to oil, grease, and fuel
Wear Classification	Heavy Contract Class 33
Weight	14,000g/m ² (12mm) 20,000g/m ² (18m)
Fire Rating	Cfl-s2
Anti-Microbial	Tested to ISO 22196
Anti-Slip	TRRL Pendulum test - very low risk for slips in both dry and wet conditions

Key Features

- Simple to install in most matwells.
- Weight cannot be rivalled in the current market.
- Will not buckle or bounce under pressure, making it suitable for wheel and trolley traffic.
- Perfect for healthcare environments as it has been proven to have anti-microbial properties, combating the spread of hospital-acquired infections, including MRSA.
- Can be fitted with a host of carpet inserts and debris channel fillers to match any style.
- Can be fitted with a host of carpet inserts to match any style.
- A cost-effective solution when compared to aluminium products.

Secondary Workspace Entrance



Colourways



Vulcan
LRV - 3.48



Vixon
LRV - 3.24



Victor
LRV - 4.87



Viscount
LRV - 2.69

Key Features

- All products conform to BS8300
- Low LRV values compared to aluminium, LVL and fibrebonded products ensuring a positive point difference is easy to achieve for areas where partially sighted traffic will be important to consider
- Equalities Act 2010 compliant
- Entrance matting resistant to point loading and scuffing from rubber wheels and walking aids

Specification

Style	1/10" Gauge
Yarn Construction	100% Econyl® Solution Dyed Nylon
Yarn Recycled Content	100%
Total Recycled Content	80%
Pile Yarn Weight	1,000g/m ²
Pile Height	5mm +/- 0.5mm
Pile Density	114,260 tufts per square metre
Total Weight	Tile 4,800g/m ² Sheet 1,800g/m ²
Total Thickness	Tile 9mm Sheet 8mm
Backing	100% Envirobace - minimum of 75% recycled material/ Unitary Bac

Dimensions	Tile 50cm x 50cm Sheet 2m x 20m
Wear Classification	Heavy Contract Class 33
Colour Fastness	Light (BS EN ISO 105:B02) >6 Shampoo (BS 1006:UK-TB:1990) 4-5 Dry Rubbing (BS EN ISO 105:B01) 4-5 Wet Rubbing (BS EN ISO 105:X12) 4-5
Flammability	BS 4790 - Low Radius of Char BS EN 13501 - Cf1-s1
Warranty	10 years
VOC Content	E1 in relation to EN 14041:2004



Secondary Frontier Fusion



Frontier Fusion is made from 100% Econyl® yarn, which is a regenerated nylon that is derived from pre and post-consumer waste, such as discarded fishing nets, fabric scraps and industrial plastic. Made from 80% wool from renewable sources only.

This robust, hard-wearing entrance matting has an integral scraper yarn that cleans shoes as people walk through the entrance into your property. All products conform to BS8300.

It is specifically designed for reducing the amount of dirt, water and debris that is usually tracked into buildings. Equalities Act 2010 compliant.



Colourways



Frontier Fusion
Black Mist



Frontier Fusion
Blue Stone Pearl



Frontier Fusion
Boulder Grey



Frontier Fusion
Gun Metal

Specification

Style	Tufted Twist Pile
Fibre Construction	100% Solution Dyed Econyl® that comes entirely from different types of nylon waste (with integrated scraper)
Yarn Recycled Content	100%
Total Recycled Content	24%
Pile Yarn Weight	840g/m ²
Pile Height	5mm +/- 0.5mm
Total Weight	Tile 3,950g/m ² Sheet 3,555g/m ²
Total Thickness	Tile 8mm Sheet 7.5mm
Backing	Tile 100% Envirobase Sheet PVC
Dimensions	Tile 50cm x 50cm Sheet 2m x 25m

To see the true colour representation of the product, please refer to the shade card or request a sample, since monitors and lighting can affect the overall appearance of the colour/ tile.

Secondary CrossFort



CrossFort tiles are manufactured in the UK with ultra-strong fibres for exceptional resilience, making them ideal for high-traffic areas.

The diagonal pattern creates a dynamic entrance statement, whilst protecting the building from dirt and debris.

Specifically designed to be tough and durable, these tiles can also handle rugby boots, spiked football cleats and golf shoes.

Key Features

- Simple to install.
- Can be laid tessellated or broadloom.
- 10-year guarantee.
- Made in the UK with a commitment to sustainability.
- Made with 15% recycled polyester.
- The backing is made from over 75% recycled material.
- Superior strength and resilience. Will not fray or ravel.

Colourways



CrossFort
Anthracite



CrossFort
Slate



CrossFort
Sapphire

Specification

Pile Material	85% Polypropylene, 15% Recycled Polyester
Total Weight	4,625g/m ²
Total Thickness	13mm
Backing	100% Envirobase – minimum of 75% recycled material
Tile Size	50cm x 50cm
Tiles Per Box	16 (4m ²)
Colour Fastness	Light (BS EN ISO 105:B02) >6 Dry Rubbing (BS EN ISO 105:X12) 5 Wet Rubbing (BS EN ISO 105:X12) 5
Flammability	(BS6307) Methenamine Pill Test - Pass
BS EN 13501	Class Efl
Adhesive Guide Carpet	Tackifier F41 or Bostik Laybond Tile Tackifier

To see the true colour representation of the product, please refer to the shade card or request a sample, since monitors and lighting can affect the overall appearance of the colour/ tile.



Putting the focus on sustainability

___At Paragon Carpet Tiles, sustainability and the environment are a priority in every step of our process. Positive green credentials run through everything we do; from having the greenest carpet tile manufacturing facility in Europe; to our zero-landfill operations. We manufacture our carpet tiles with a host of recycled content, making every step count.

The Environmental culture at Paragon Carpet Tiles is 'reduce, reuse, recycle'. Our materials are from sustainable sources, with recycled content wherever possible.

Employees are actively involved in setting and monitoring the achievement of environmental objectives and targets.

Air emissions from the production process are independently monitored for their environmental impact. Analysis has confirmed that emissions are less than 1% of Government targets.

Manufacturing activity and its impact on the environment are regularly audited by environmental health officers and have been confirmed as 'low risk', with a rating of 5 out of 175.

British Standards regularly audit the Environmental and Quality Management Systems to ensure continued compliance to accredited standards and to demonstrate continuous improvement.

Sustainable Manufacturing



UP TO
80%
of each product
is made using
recycled material



___The materials used within our production processes are from sustainable and ethical sources, and we strive to include recycled/reclaimed content wherever possible.

The current standard manufacturing process includes...

- NFC Envirobase backing which contains over 75% recycled material
- Latex pre-coat backing which contains over 75% recycled material
- Up to 80% of the total product is made using recycled materials
- Carpet yarns contain up to 100% recycled content
- Pallets obtained from sustainable sources (FSC certified)
- Tile boxes are 100% recycled cardboard
- Production processes are not water dependent
- Committed to sustainable UK manufacturing
- Members of considerate constructors scheme
- BREEAM® compliant
- Environmental Product Declarations (EPDs) available

breglobal
Environmentally
Profiled products



ISO 9001
Quality Management
System



ISO 14001
Environmental
Management System

Cleaning & Maintenance

To maximise the carpet's aesthetic appeal, performance and life expectancy, it is imperative to ensure at the specification stage that:

1. Carpets will be protected from other site activities during installation and thereafter.
2. Clients understand the enclosed information and that they accept responsibility for correct carpet care.
3. Carpets are protected from excess soiling or moisture in entrance areas, by use of an effective barrier material such as those from the Mat.Works range.

General Cleaning

Daily vacuuming with a twin motored upright vacuum cleaner, preferably with an adjustable head, is recommended. It is essential to remove all loose soil daily because if left to build up, the particles of dirt are much harder to remove and are more damaging to the fibre structure, thereby decreasing the life of the carpet.

Attention should be given to areas where there is extra traffic and in entrances to buildings where extra vacuuming is necessary.

Depending on the level of installation trafficking, the carpet should be periodically deep cleaned using high performance hot water extraction equipment.

Rotary brush cleaning not recommended.

A reputable contract cleaner should be used, preferably NCCA registered (for NCCA details visit www.ncca.co.uk). It is important that the carpet is deep cleaned at least once a year.

Stain Removal

It is essential to deal with spillages immediately and any subsequent stains as appropriate.

In the event of a spillage, immediately blot with a clean absorbent cloth until there is no further transfer from the carpet to the cloth. If any further stain remains or has otherwise been allowed to dry, the method will vary accordingly.

It is recognised that particularly for contract situations, if stains are not dealt with immediately, cleaning staff may not be in a position to identify the type of stain. A good quality, multi-purpose stain remover is therefore very useful, although it must be understood that this will not successfully tackle all types of stains, and wherever possible the chart recommendations should be strictly followed.

Also any stains left over a period of time become increasingly more difficult to remove and may require several treatments.

In all cases, after stain removal, the carpet should be allowed to dry completely and then cleaned with a twin motored upright vacuum cleaner.

Solvent cleaning of bitumen backed tiles should preferably be avoided. Where this is not possible, extra caution should be taken and only very light surface cleaning should take place.

If any of the treatments listed are not successful, seek professional help.

The methods are recommended in good faith; however, we cannot accept responsibility for their use in any specific case.

Stain Type	Stain Removal Procedure
Tea / Coffee Food Fountain Pen Ink Water Based Paint	A liquid detergent solution such as Granwax Ezee Spot & Stain Remover. Apply the solution to the stained area. Lightly agitate affected areas & remove by use of absorbent cloth. Stubborn stains may require a second application.
Chewing Gum	Apply chewing gum remover then break-up and remove pieces or pierce gum with fork or Prochem Perforator Block then apply Citrus Gel or Solvall Spotter and leave for a few minutes. Remove softened gum with spatula or blunt knife. For large areas apply Bazooka Gum Remover in conjunction with Bazooka Gum Removal Machine.
Grease	Scrape up excess, hardened residue prior to wetting. Apply Solvex or Solvall Spotter and blot. Apply Citrus Gel and blot. Apply Stain Pro and blot. For larger areas apply Power Burst then rinse extract thoroughly.
Ink (solvent soluble)	Apply Solvex and blot – do not rub. Repeat as needed. If stain persists, apply Citrus Gel. Rinse thoroughly with water and blot until dry. Note: All inks are not the same and different approaches may have to be evaluated.
Milk	Apply Stain Pro and blot. Apply Fibre & Fabric Rinse solution and blot until dry. If stain persists apply Solvex or Citrus Gel and blot. Apply Neutral Pro-Spotter and blot. Rinse thoroughly with water and blot until dry.
Oils	Apply Solvall Spotter and blot or apply Citrus Gel and blot or apply Solvex and blot until dry. Where a solvent cannot be used apply Power Burst solution, brush and rinse with Fibre & Fabric Rinse solution.
Oil Based Paint / Varnish	Apply Solvall Spotter and blot or apply Citrus Gel and blot or apply Solvex and blot. Re-apply Solvex until as much paint as possible is removed then weight down the stain with towels for several hours to loosen. Apply Neutral Pro-Spotter, work into stain then blot. Rinse thoroughly with water and blot until dry.
Shoe Polish	Apply Solvex or Sovall Spotter & blot. Apply Citrus Gel & blot. Rinse thoroughly with water & blot until dry.
Tar & Asphalt	Scrape off as much as possible with blunt knife. Apply Solvall Spotter or Solvex and blot. Apply Citrus Gel and blot. Apply Neutral Pro-Spotter and blot then rinse thoroughly with water and blot until dry.

Health and Safety

Please ensure that for all above referenced items, the manufacturers' use & safety instructions are adhered to.

Granwax Ezee Spot & Stain Remover can be obtained from Granwax Products Ltd; telephone 01773 541177

Other products listed can be obtained from Prochem Europe Ltd; telephone 020 8974 1515

Case Studies



Dean Clough Mill Offices

___ Inspired by the robust and enduring, sturdy tree, Hornbeam embodies the true essence of nature on our doorstep.

We supplied the Hornbeam carpet tiles and Duera LVT to Xenon Workplace who carried out a significant renovation of the office space in Dean Clough. Hornbeam is one of Paragon Carpet Tiles' most luxurious carpet tiles, offering a soft texture to flooring designs, whilst remaining durable, easy-to-clean and long-lasting.

This product has achieved the indoor air comfort gold certification – the best assurance that Paragon carpet tiles fulfil low product emissions requirements across Europe and comply with requirements for sustainable buildings such as LEED, BREEAM New Construction, DGNB, WELL Building and Italian CAM Edilizia.

This prestigious product certification therefore demonstrates Paragon's unwavering commitment to providing high-quality carpet tiles that contribute to healthy indoor environments.

We manufacture Hornbeam using ECONYL® yarn, a 100% regenerated nylon and our proprietary Envirobase backing that we make with recycled materials. This combination minimises our environmental impact. Visit our website to see how we proudly uphold our British heritage and remain dedicated to sustainable UK manufacturing.

Product shown **Hornbeam** Glade Dusk



The Mailing Room, Bury

___ The Mailing Room opted for the stylish Phase, creating a sleek and modern finish to their office environment.

The shade 'Virtual Ebony' added a slick element to the rooms, with the dark grey and black design being a popular choice for office spaces due to its versatility. This collection is inspired by Flora and Fauna and the Phase design takes inspiration from nature's reptilian skin and the structure of wind rushed tree bark.

With a random multi-level design running through each and every carpet tile, the variety of designs available in the Inspiration Collection range provide a truly unique and exclusive installation for every project.

Product shown **Phase** Virtual Ebony

This case study shows how the Phase carpet tiles can be installed in a broadloom manor. They can also be laid in a tessellated pattern to create a checkerboard effect.

The Mailing Room were over the moon with the finished result and loved the aesthetic that these carpet tiles created. They have breathed a stylish new life into the company's office spaces, allowing the rooms to be used to their full potential, encouraging creativity, collaboration and innovation.

To place your order
+44 (0)1709 763800
sales@paragon-carpets.co.uk

More information & samples
paragon-carpets.co.uk
samples@paragon-carpets.co.uk

 **PARAGON**
CARPET TILES

Paragon Carpet Tiles
Farfield Park, Manvers,
Wath-upon-Deerne,
Rotherham S63 5DB
United Kingdom

